

IQI

PO BOX 39

WILMETTE, IL 60091

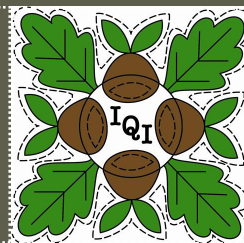
WEBSITES:

[WWW.ILLINOISQUILTERS.ORG](http://WWW.ILLINOISQUILTERS.ORG)

[WWW.ILLINOISQUILTERSINC.ORG](http://WWW.ILLINOISQUILTERSINC.ORG)

[ILLINOISQUILTERS.COM](http://ILLINOISQUILTERS.COM)

# The Oak Leaf



VOLUME 31, ISSUE 7

MARCH, 2012

## COMING UP!

- March 1, 2012—**Meeting**—Denise Havlan - Evolution of One Quilter, - Beth Hillel, Wilmette IL
- March 19, 2012—**Board**—Wilmette Public Library
- April 5, 2012—**Meeting**—Quilter's Fair! - Beth Hillel, Wilmette IL
- May 3, 2012—**Meeting**—Maggie Weiss - **Personal Geography**—Beth Hillel, Wilmette IL
- May 5, 2012—**Workshop**—Maggie Weiss—Pop Art Block Quilts
- June 1, 2012—**Year End Potluck**—Gloria Dei, Northbrook, IL

### Inside this issue:

NEW! Workshop	2
2013 Raffle Quilt	3
Workshop Registration Form	4
Financial Matters	5
Program Calendar	6
Quilt In 2012 Pictures	7
Board and Committees	8

## President's Message

Have you considered how lucky we are to have such a wonderful guild? Many years ago, when I was exiled to Minnesota, I joined another quilt guild. There I overheard members talking enviously about "that fancy guild in Chicago that has a speaker *every month*." That guild was IQI. In addition to speakers and imaginative programs throughout the year, IQI is the only guild I know of that has a lending library for members.

Membership fees are not sufficient to finance a meeting hall, speakers, and a library. We need to raise funds through other methods as well. Our primary fundraiser is our annual raffle quilt. Last year we raised over \$3700 before the Fine Art of Fiber. That money goes directly to pay for the services we all enjoy.

If you have not already collected your envelope of raffle tickets (complete with a photo of the raffle quilt!), I urge you to do so soon. And then sell the tickets to your friends, family, and colleagues. It all goes to support the guild.

Happy Quilting,  
Jennie Gordon

Bring to IQI Meeting  
March 1, 2012!

- Nametag
- Show & Tell
- Personal datebook to schedule workshops, volunteer dates & events
- Checkbook to sign up for 2012 workshops
- Items to donate to the Quilter's Fair
- Yourself (and a friend-guest fee just \$5)

## New Workshop Added!!!

### May 5

### Maggie Weiss—see pg 2

## May workshop—Maggie Weiss

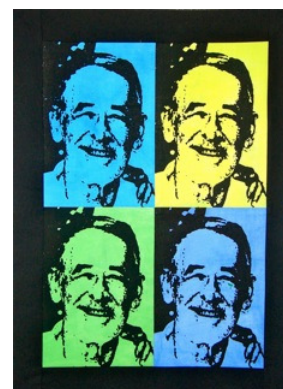
Registration form: [http://illinoisquilters.com/events/workshops/2011\\_workshop\\_reg\\_form.pdf](http://illinoisquilters.com/events/workshops/2011_workshop_reg_form.pdf)



**Pop Art Block Quilts**  
**Saturday, May 5, 2012**  
**9AM – 4PM**

One Day Workshop – work apron required  
 class fee \$58(member) / \$68 (non member)  
 \$25 supply fee

One image repeated to great effect and combined with vividly contrasting cloth (either 7 colors or b & w), and opaque paints makes for a stunning quilt top. Careful color combinations produce spectacular results! After assembling pre-made thermofax screens, students consider value and color combinations and proceed to adding sashings and borders and possible assembly of quilt tops in the after—



## IQI Workshop Registration Form for 2011-12

Name: \_\_\_\_\_

Phone: \_\_\_\_\_ E-mail address: \_\_\_\_\_

Non-members only: \_\_\_\_\_  
Address City St. Zip

For each workshop, please circle the Member or Non-Member Price.  
Amount remitted with each form should be the total of all circled amounts.

**Remember:** If you host a workshop you will get a coupon for one **FREE** workshop!

Date	Workshop Title	Member	Non-Member
May 5, 2012	Maggie Weiss—Pop Art Block Quilts	58.00	68.00
	<b>TOTAL AMOUNT DUE:</b>		

Supply lists are available on the IQI website: [www.illinoisquilters.com](http://www.illinoisquilters.com)

Bring a completed form with check or cash to a monthly meeting or send the completed form with a check payable to IQI to:

Chris Deering  
7310 N Claremont Ave  
Chicago IL 60645  
[chris@toldme.com](mailto:chris@toldme.com)  
773-761-7497

Refunds are available up to 30 days in advance minus a \$5 per-workshop-dayhandling fee. Requests for refunds must be in writing and sent to the workshopregistration coordinator.

# 2013 Raffle Quilt

**Hello 2013 Raffle Quilt Testers!**

**Please return your finished pieced mountain blocks to the March 1st meeting. If you can not attend, please contact Sue, Donna or Linda to make arrangements for drop off.**

**We will have a few additional easy paper piecing kits available at the March 1st meeting We are asking that these kits be returned completed at the April 5th meeting when the applique kits will be ready.**

**We wish to Thank all the volunteers. We are on our target timeline for completion!**

**Sue DiVarco  
773.271.7187**

**Donna Derstadt  
847.275.8442**

**Linda Yatzor  
847.374.8932**

**Remember to pick up  
your raffle tickets for  
the 2012 Raffle Quilt at  
our next meeting.**



# Financial Matters

## Illinois Quilters, Inc. Financial Report January 31, 2012

### Checking Account:

Opening Balance, 1/01/12	\$ 18,613.40	
Income	6,450.83	
Cleared Expenses	<u>3,290.88</u>	
Closing Balance, 1/31/12		\$ 21,904.28

Uncleared checks	2,463.41	
Less Anticipated Expenses	<u>\$ 2,800.00</u>	
Available Cash		\$ 16,640.87

Savings Account:	<u>\$ 9,910.83</u>
Cash on Hand, 1/31/12	<u>\$31,815.11</u>

## Fine Art of Fiber - 2011

### Revenue and Expense Summary

	<u>IQI</u>	<u>NSNG</u>	<u>Weavers</u>	<u>Total</u>
<b><u>Revenue</u></b>				
Boutique Sales (includes Sales Tax)	18,429.52	60,101.24	206.70	78,737.46
Sales Tax	<u>1,445.00</u>	<u>4,708.00</u>	<u>-</u>	<u>6,153.00</u>
Revenue Net of Sales Tax	16,984.52	55,393.24	206.70	72,584.46
Raffle	992.00	474.50	-	1,466.50
Silent Auction	<u>1,297.00</u>	<u>905.50</u>	<u>782.00</u>	<u>2,984.50</u>
<b>Total Deposits Net of Sales Tax</b>	19,273.52	56,773.24	988.70	77,035.46
<b><u>Expenses</u></b>				
Payments to Vendors	(12,738.39)	(41,544.93)	-	(54,283.32)
Expenses to be Split	<u>(3,954.30)</u>	<u>(8,746.36)</u>	<u>(1,016.00)</u>	<u>(13,716.66)</u>
<b>Total Expenses</b>	(16,692.69)	(50,291.29)	(1,016.00)	(67,999.98)
<b>Profit Split</b>	2,580.83	6,481.95	(27.30)	9,035.48





## IQI 2011-2012 program year



### March

**Meeting:** Denise Havlan: Evolution of One Quilter

March 1, 2012

**Service Day**

March 17, 2012

**Board Meeting:** Wilmette Library

March 19, 2012

### April

**Meeting:** IQI's Quilter's Fair

April 5, 2012

**Service Day**

April 20, 2012

### May

**Meeting:** Maggie Weiss—Personal Geography

May 3, 2012

**Workshop:** Maggie Weiss—Pop Art Block Quilts

**Service Day**

May 18, 2012

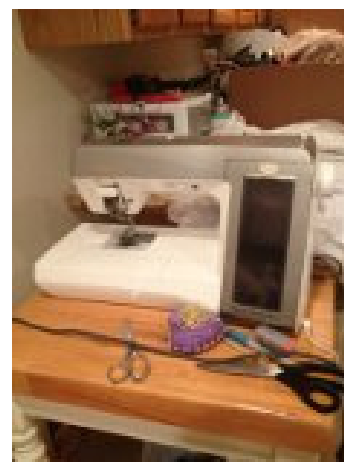
### June

**Annual Meeting and Potluck** At Gloria Dei

June 7, 2012

# FOR SALE

## Baby Lock Ellegante Model BLG



Look up all the details at:

[www.babylock.com/embroidery/previous-models/ellegante-BLG/](http://www.babylock.com/embroidery/previous-models/ellegante-BLG/)

Comes with all listed accessories (sewing and embroidery)

Asking \$3,000.00 original purchase price \$6,400.00 brand new  
(age 6yrs. Old)

Contact Agnes at 630.589.2204 or EM at [agness@marykay.com](mailto:agness@marykay.com)

Optional: sewing room cabinetry and counter FREE with purchase  
(buyer must disassemble)



# Pictures from Quilt In 2012





# 2011-12 IQI Board & Committee Roster

## BOARD OF DIRECTORS

President	Jennie Gordon
VP-Programs	Diana Burrows
VP-Contracts	Roberta Levin
Treasurer	Esther Behnke
Secretary	Donna Derstadt
Fine Art of Fiber*	Ardis Mistak
	Judy Curtis
	Jan Aaron
Membership*	Cynthia Churchwell & Georgia Cibul
<i>Oak Leaf Editor</i>	Ellen Pomes
Workshops* - Hosts	Mary Meyers
- Registrations	Chris Deering
Member-at-Large	Diane Capitani

*\*shared office / shared vote*

## COMMITTEE CHAIRS:

Challenge	Georgia Cibul
Library	Barbara Feinberg & Linda Feinberg & Judith Maffris
Publicity	Angel Sidor
Website	Ellen Pomes
Quilt-In	Deb Pine Fay Stickler Amy Spungen Laurie Golden
Raffle Quilt 2012	Georgia Cibul & Stephanie Strand
	Sue Divarco
Raffle Quilt 2013	Donna Dernstadt Linda Yatzor
Service / Friendship	Lynn Bradburn Diana Burrows
Historian	Diane Capitani

## Did you know?

That each member is entitled to one free ad per year in the **Oak Leaf**? You can use it to advertise any goods or services for sale.

Please submit your ad (1/4 page or smaller) to [info@illinoisquilters.com](mailto:info@illinoisquilters.com) - just see all the contact information and submission deadlines below.

## About the Oak Leaf: Advertising Rates & Contact Info

The Oak Leaf is published nine times yearly by Illinois Quilters Inc. Advertising from individuals, groups and businesses is welcome and subject to approval by the editor.

Please address any correspondence to Ellen Pomes, editor, by email to:

[info@illinoisquilters.com](mailto:info@illinoisquilters.com)

Size	Monthly	Yearly (9-10 issues)
Business Card	\$5	\$30
¼ Page	\$8	\$60
½ Page	\$15	\$120
Full Page	\$30	\$240