

IQI

PO BOX 39

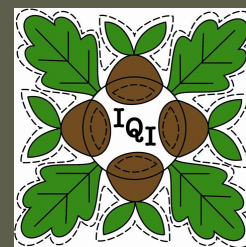
WILMETTE, IL 60091

WEBSITES:

[WWW.ILLINOISQUILTERS.ORG](http://WWW.ILLINOISQUILTERS.ORG)

[WWW.ILLINOISQUILTERSINC.ORG](http://WWW.ILLINOISQUILTERSINC.ORG)

[WWW.ILLINOISQUILTERS.COM](http://WWW.ILLINOISQUILTERS.COM)



# The Oak Leaf

VOLUME 32, ISSUE 1

SEPTEMBER, 2012

## COMING UP!

- **September 6 - Meeting**  
It's the IQI Schoolhouse!  
Come learn a new technique or a tool! First General guild meeting of the 2012-2013 year @ Beth Hillel. Doors open at 6:45 for signups, library and socializing. Meeting starts @ 7:30 pm.
- **September 15**, Deadline for entries and Boutique signup for Fine Art of Fiber.
- **Saturday, September 15 Service Day** at Gloria Dei, Northbrook
- **Monday September 20 Board Meeting** - Wilmette Public Library 7:15PM.
- **Oct 4, 2012 Meeting:** Susan Italo—Wild Onion Studio
- **Oct. 5,6 2012 Workshops:** Susan Italo
  - Friday: Weaving on your sewing machine
  - Saturday: Trapped Fibers
- **Nov. 1-4 Fine Art of Fiber** - Chicago Botanic Garden

### Inside this issue:

<a href="#">October Workshops</a>	2
<a href="#">Fine Art of Fiber</a>	3
<a href="#">Program Calendar</a>	4
<a href="#">September Meeting</a>	5
<a href="#">Library</a>	6
<a href="#">Quilt In 2013!</a>	7
<a href="#">Workshop Descriptions</a>	8-11
<a href="#">Oct Workshop Supply List</a>	12-13
<a href="#">Location information</a>	14
<a href="#">Of Interest to Quilters</a>	15
Forms, Forms, Forms!	16-20
<a href="#">Board/Committee Contacts</a>	21

## President's Message

Welcome back to another year of fabulous quilting. Our VP-Programs Roberta Levin has lined up a list of stellar speakers, from wearable art to scrap quilts, from weaving on your sewing machine to wool appliqué, from embellishing to designing. Reservations for the workshops are going quickly so be sure to sign up asap!

Back by popular demand, we'll be having another garage sale, this time in conjunction with our June Pot Luck.

I hope everybody has been busy working on small items to donate to the Silent Auction at our

November quilt show, the Fine Art of Fiber. If we all donate 3-5 items, the Silent Auction should be a resounding success again. Also, remember the Boutique. If you have lots of hand made items, consider selling them at the Boutique.

The bylaws and a listing of former presidents of IQI will now be housed on our website. This will make it easier to have our new Membership Directory printed economically. Last year's directory on our website was not a success, so we are going back to a printed copy.

Be sure our membership chair Katie Joy Jackson has your up-to-date information.

And, finally, the International Quilt Festival will return to the Stevens Convention Center in Rosemont on June 21-23, 2013 with Preview Night on June 20.

Keep on quilting,  
Esther Behnke

Email: [president@illinoisquilters.com](mailto:president@illinoisquilters.com)

### Bring to IQI Meeting!

- Nametag
- Show & Tell
- Entry forms for Fine Art of Fiber!!!
- Checkbook and personal calendar to sign up for 2012-2013 membership, workshops, volunteer dates, and events
- 2012 Raffle Ticket Stubs
- Items to donate to the Quilter's Fair
- IQI Library Books!

Beth Hillel requests that IQI members **do not arrive before 6:30pm** for the IQI meeting—because their students are dismissed at 6:15pm.

**Don't forget!**  
**IQI Library Books Due!**



## October workshops—Susan Italo

**Supply lists** can be found on page [12-13](#) of this newsletter and on our website.

### Weaving on your Sewing / Quilting Machine

October 5, 2012

Weaving combines texture and color with fibers. Traditionally created on a loom, weaving with a sewing or quilting machine allows for endless possibility of creative play. Whether you want to create a background fabric for appliqué, some interesting alternate blocks for piecing, or an entire wearable art piece, weaving will add appeal and interest no matter what color or fabric you use. We will discuss many variations of weaving techniques and fabrics in this unique class.



### Trapped Fibers

October 6, 2012

Create your own art fabric using fabric, fibers, and film. Borrowing supplies from other fiber media, we will experiment with new techniques and materials to discover exciting ways to personalize the very basis of our quilts – fabric! Luscious silks, shimmering chiffons, even ragtag strips and threads become one-of-a-kind fabrics under the sewing needle. Add pizzazz to your art quilts, wearables, postcards, and more



### Daughter of 2012 Garage Sale

The garage sale was such a success, we're going to have another round! The next sale will be at the June potluck, **Thursday, June 6, 2013.**

Donations will be collected throughout the year, beginning at the September meeting. We're looking for patterns, threads, books, gadgets, even UFOs.

Remember, the odds and ends you are pushing around could be someone's heart's desire.

Jennie Gordon

### 2012 Raffle Quilt

Look at our fabulous Raffle Quilt "Alainn". We need your ticket sale proceeds! Raffle ticket sales help fund the guild activities—especially speakers and workshops. **All sales before the Fine Art of Fiber are 100% profit to IQ!** Ticket proceeds can be turned over to our new Treasurer, Randy at the September/October meetings.





## Fine Art of Fiber – Boutique

Just a reminder- **There is a limited amount of space** in the boutique and **only 60 sellers** will be able to participate. The boutique entry form (The forms are available on the web at [www.fineartoffiber.org](http://www.fineartoffiber.org)) is due no later than September 12th. The form should be sent to Carol Levenberg- her address appears on the top of the application form. Please note that the application does not guarantee acceptance. You will be informed by the end of September if you have been accepted and what your ID will be.

You will take home 75% of all the goods that you sell at the boutique. IQI will get 15% and the Garden 10%. The money that goes to IQI helps to pay for our monthly speakers, workshops, etc.

You don't need to have a huge inventory of goods to participate – try your hand with just a few items or sell something you might have in your stash of projects. To encourage our guild members to participate, we have REDUCED the work requirement to only one 3/12 hour shift. You will come and set up your items before the show, and pick up whatever is not sold on Sunday after the show closes. The boutique is always busy and time flies!

Any questions? Please contact Roberta Levin at [rlevin2000@aol.com](mailto:rlevin2000@aol.com) or by phone at 847-924-7495.

I will be happy to answer any questions or find out the answer.

### FAOF SILENT AUCTION Needs YOU!!

DO you have orphan blocks - with a little creativity, turn them into potholders, place mats, or cubicle wallhangings. Class samples? Make them in to framed art pieces. Or something like that. Then donate them!

The Silent Auction at the Fine Art of Fiber is one of the guild's fundraisers. Any objects that include your work with a needle and thread are more than welcome. The FAOF is in early November each year and visitors to the show enjoy bidding on and winning beautiful handmade works of art. I've received many beautiful things already - thanks to our wonderful members - but we can always use more.

Please consider donating something to raise money for IQI. A submission form is needed for each item so it can be properly valued and these can be found on our website and at [fineartoffiber.org](http://fineartoffiber.org). SO, get busy and creative, and bring your objects d'arte to the September and October meetings! Thanks! Chris Deering





## IQI 2012-2013 Program year



<b>September</b>	
<b>Meeting:</b> <a href="#">Schoolhouse! - Come Learn Something New</a>	Sept. 6, 2012
<b>October</b>	
<b>Meeting:</b> <a href="#">Susan Italo - Trunk Show</a>	Oct. 4, 2013
<b>Workshop:</b> <a href="#">Susan Italo - Weaving on your Sewing / Quilting Machine</a>	Oct. 5, 2013
<b>Workshop:</b> <a href="#">Susan Italo - Trapped Fiber Techniques</a>	Oct. 6, 2013
<b>November</b>	
<b>Fine Art Of Fiber</b>	Nov. 1-4, 2013
<b>December</b>	
<b>Meeting:</b> December Potluck	Dec. 6, 2013
<b>January</b>	
<b>Meeting:</b> <a href="#">Kathy Kansier - Tell me about my Grandma's Quilt</a>	Jan. 3, 2013
<b>Workshop:</b> <a href="#">Kathy Kansier - Wool Appliqué Frutopia</a>	Jan. 4, 2013 - AM
<b>Workshop:</b> <a href="#">Kathy Kansier - Appraisal Fair</a>	Jan. 4, 2013
<b>Workshop:</b> <a href="#">Kathy Kansier - Quilts with Great Edges</a>	Jan. 5, 2013
<b>IQI Annual QUILT-IN</b>	Jan 27-29, 2013
<b>February</b>	
<b>Meeting:</b> Mary Lou Weidman - Out of the Box	Feb 7, 2013
<b>Workshop:</b> Mary Lou Weidman - Embellishing Quilts	Feb 8, 2013
<b>Workshop:</b> Mary Lou Weidman - Easy Funky Piecing	Feb 9, 2013
<b>March</b>	
<b>Meeting:</b> Virginia Carlson - How I Got Creativity and Didn't Know it!	March 7, 2013
<b>Workshop:</b> Virginia Carlson - How to Start with an Art Quilt	March 8, 2013
<b>Workshop:</b> Virginia Carlson - Surface Design for Art Quilts	March 9, 2013
<b>April</b>	
<b>Meeting:</b> Ann Pigneri - How to Create Stunning Quilts	Apr 4, 2013
<b>Workshop:</b> Ann Pigneri - McTavishing	Apr 5, 2013
<b>Workshop:</b> Ann Pigneri - Quilt as Desired	Apr 6, 2013
<b>May</b>	
<b>Meeting:</b> Jan Krueger and Linda Marcou Trunk Show: Scrapbusters	May 9, 2013
<b>Retreat:</b> Bust that Stash Quilt Event	May 10-11 2013
<b>June</b>	
<b>Annual Meeting and Potluck</b> At Gloria Dei	June 6, 2013



Back to School



## September 6, 2012 Quilter's Schoolhouse!

September is back to school month and Illinois Quilters Guild members are joining in the fun. Like getting a new box of crayons, we'll replenish our quilter's toolboxes with something new. Join us in September as we kick off our new program year with a fun and lively Schoolhouse!

This month, we'll gather for a lively evening of:

- ⇒ Tips
- ⇒ Techniques
- ⇒ Tools
- ⇒ Demonstrations
- ⇒ Make it & take it
- ⇒ Show & Tell
- ⇒ Workshop Signups
- ⇒ Sew a Block for Service
- ⇒ Library
- ⇒ Door prizes

Every 15 minutes the bell will ring and you'll get to learn something new! We'll also highlight the 2012-2013 lectures and workshops. Guests are welcome as usual for a \$5 fee. If they sign up for membership that evening, the \$5 will apply towards their membership!

### Illinois Quilters, Inc. Financial Report June 30, 2012

#### Checking Account:

Opening Balance, 6/01/12	\$	9,294.54
Income		2,237.00
Cleared Expenses		338.24
Closing Balance, 6/30/12	\$	11,183.30

#### Savings Account:

	\$	9,912.85
Cash on Hand, 6/30/12	\$	21,096.15

Esther Behnke, Treasurer



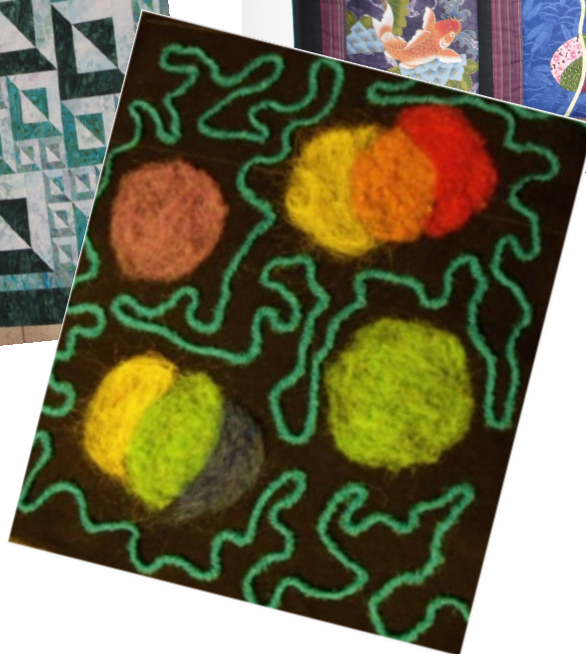


# Quilt-In is Coming!

Come and join about 60 fellow quilters at the IQI Quilt-In retreat. We'll sew, chat, eat, and sew. This year's Quilt-In will be held on January 25-27, 2013 at Techny Towers in Northbrook. You'll arrive sometime on Friday afternoon or evening and stay until Sunday after-noon. Your registration will include meals on Saturday and brunch on Sunday (Friday night dinner is on your own: there are lots of restaurants nearby), your room, workshops & more. Everyone pitches in and brings snacks that are available throughout the weekend. As usual, there are a number of (optional) fantastic workshops planned, and the fees are included in your registration. Workshops signups are based on availability so please turn in your registration form ASAP.

Classes include needle felting, folded fabric flowers and a quilt pattern called Magic Squares (see pictures) among others. You can see descriptions and samples for the workshops at the Quilt-In table at our regular monthly meetings, and ask any questions you may have.

Chris Deering  
Cynthia Churchwell



Quilt in Registration form:  
[illinoisquilters.com/](http://illinoisquilters.com/)

<http://>



# 2012-2013 Programs and Workshops

## Sign Up Today!!!

**This year workshop fees have  
DECREASED!**

**Workshops generally cost only \$45 for members**

September, 2012– IQI Schoolhouse!

Come Learn a new Tool/Technique  
Thursday, Sept 6, 2012

October, 2012– Susan Italo  
Wild Onion Studio

Lecture & Two Full Day Workshops  
See pg 2 for full details on these workshops



January, 2013— Kathy Kansier

Kathy Kansier is a quilt teacher, quilt show judge and an AQS certified quilt appraiser. In 2008, she received the prestigious Jewel Pearce Patterson Award for Quilt Teachers. Her quilts have been exhibited internationally and she has won both regional and national awards. She has appraised nearly 2,000 quilts and has judged over 8,000 quilts. Multi-talented Kathy will present her lecture "Tell Me About my Grandma's Quilt" on Thursday, January 3<sup>rd</sup>, 2013. She will discuss a selection of 20 quilts.

### FRIDAY AM WORKSHOP: WOOL APPLIQUE Fruitopia

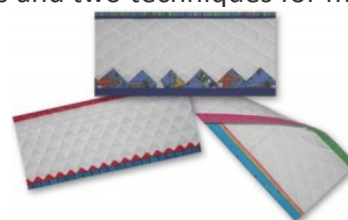
Students will learn to work with wool for applique. A variety of hand stitches will be taught for finishing the edges of the wool motifs.



**FRIDAY AFTERNOON: APPRAISAL FAIR-**  
Kathy will appraise quilts by appointment.

### SATURDAY WORKSHOP-QUILTS WITH GREAT EDGES

You will learn a variety of impressive techniques to complete the edges of your quilts. You will make and go home with samples including a double fold binding with mitered corners and connected tails, rick-rack binding, reversible binding, fused binding, prairie points, scallops and two techniques for making piping.





# February 2013

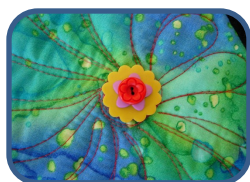
## Mary Lou Weidman Mary Lou Quilts



**Mary Lou Weidman** has traveled the world teaching workshops that share her happy, whimsical quilting style. She has written four large books: *Whimsies and Whynots*, *Everyday Angels*, *Quilted Memories* and *Out of the Box*, and she also owns a pattern company. Her technique books *Hoochy Mama Quilts* and *Flower Power* are popular with her students when she travels and teaches workshops on her style.

Mary Lou will present her lecture and trunk show "Out of the Box". This lecture discusses how to get out, stretch, and stay out of the box. How to learn new things, go new directions and take the road less traveled.

### FRIDAY WORKSHOP:



#### EMBELLISHING QUILTS

Bring a favorite quilt that has been quilted, your favorite buttons, beads, rickrack, trim, flosses, and see what wonderful glorious things we can do to make a simple quilt a piece of art and excitement. Mary Lou's embellished quilts have won many awards. Once you start embellishing quilts, you won't be happy with keeping them plain. Come and learn the basics and some exciting new ideas that can make something that's ho hum into TERRIFIC art!



### SATURDAY WORKSHOP EASY FUNKY PIECING (EASY PIECING THE FUN WAY)



Mary Lou has designed many "things" that are all pieced the "hoochy way" and they are fabulous and make terrific quilts with bright fabrics and a will to be creative and "out of the box." Let her teach you how while you make fish, flowers, faces, houses, toys, cats and loads of other fun things.

Website: [www.marylouquilt designs.com/](http://www.marylouquilt designs.com/)

Blog: [marylouweidman.blogspot.com/](http://marylouweidman.blogspot.com/)



**March 2013**

**Virginia Cruz Carlson**



We are so fortunate to host IQJ's own Virginia Carlson. An award-winning art quilter, Virginia will provide us with a lecture and slide show entitled "How I Got to Creativity and Didn't Know It". She will show the progression of her work and will share the comments that she received during this process. Also to be discussed is how joining an art gallery sped up that progression.



**FRIDAY WORKSHOP:**

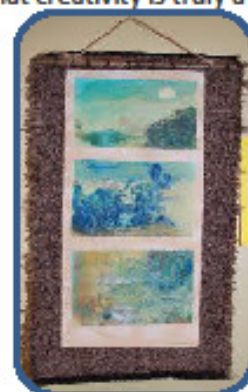
**HOW TO START WITH AN ART QUILT**

This class will take the fear out of starting an art quilt. Using your favorite fabrics, thread, beads, buttons and embellishments, (paintsticks and fabric markers are welcome too), you will go through some exercises that will develop confidence in your creativity. Some will be unusual, just to show you that creativity is truly a muscle that needs exercising.



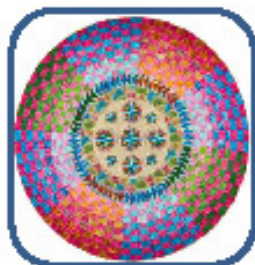
**SATURDAY WORKSHOP**

**SURFACE DESIGN FOR ART QUILTS**



This class will explore the various types of surface design. In this workshop, we'll be bringing fabrics we love AND fabrics we're not so in love with. Traditional and nontraditional fabrics and photos on fabrics will be used to show how surface design can change the entire look of the fabric and create a unique look for your art quilt. We'll be working with decorative and metallic threads and layering sheer fabrics to change the look of the fabric and create shadow illusions.





**April 2013**

**Ann Pigneri**



Ann Pigneri is a quilt creator, designer and teacher living in Louisville, KY. She loves to design and create her own quilts and really enjoys color. She loves the interaction of color and design to create a visually stimulating and pleasing quilt. In April, she will present her lecture and trunk show, "How to Create Stunning Quilts", which is a fun and exciting lecture to aid you in creating stunning quilts! Why make a ho hum quilt when it takes just as much time to make an awww...how did you do that quilt? Learn some easy to understand and simple principals to aid you in future color selection to make your quilts have pizzazz. Even traditional quilts can be enhanced with fantastic color selection!

**FRIDAY WORKSHOP:**

**McTAVISHING & BEYOND**



Ann is certified to teach the McTavishing method of quilt fill created by long arm quilter Karen McTavish. You will learn the basic McTavishing method, mini-McTavishing and Cyclone McTavishing on a home sewing machine, plus flames, paisleys and curls and swirls with a McTavishing twist. Enhance your quilts with these wonderful machine quilting techniques! If you stitch on a midarm or long arm machine the techniques are the same, and your class knowledge will easily transfer to your machine. You will make the circle and a sampler in the class!



**SATURDAY WORKSHOP**

**QUILT AS DESIRED???**

**WHAT ON EARTH DOES THAT MEAN???**



Curves, straight lines, feather designs, cables, stencils, mark or no mark??? We will discuss in depth several drawing methods and thought processes to determine what would best enhance rather than hinder your beautiful quilt tops. This class will include an extensive trunk show, highlighting what to quilt in different situations. This class will apply any type of machine- home sewing or long arm. We will also have a demo and cover how to machine quilt a perfectly straight line with a home sewing machine without marking on your gorgeous quilt top. Please bring quilt tops if you are unsure what on earth to quilt on these. We will also discuss marking and the use of registration lines rather than marking the entire top, an in depth discussion of threads, and thread weights and how this affects the quilt appearance as well as thread tension as it relates to different thread weights.

Website: <http://www.annpigneri.com/>



# Weaving on your Sewing Machine Supply List

© Susan Conn Italo/Wild Onion Studio

Are you ready to add some woven texture to your quilts or wearable art? You don't need a big loom-- we are going to use our sewing machines to do the work! While this is primarily a technique class, we will create various sized samples that will be useable to create projects. Use the samples we make to add pizzazz to your art quilts, wearables, postcards, and more.

## Here's what you need:

- 18" x 22" piece of fabric to act as the base of a tote.
- double sided fusible (bonus points if you pre-fuse the above fabric before class!)
- Alene's Tacky glue. It's a great, washable glue. My tip: I also buy some Elmer's Glue, and dump it out, then replace it with the Alene's glue-- the flatter bottle shape of the Elmer's is easier on my hands if I'm going to be doing a lot of squeezing!
- Avery brand Removable Glue Stick. No other brand or type! You might have to order this from a stationery store, and you are more than welcome to share with others. I will bring a few to share/sell. I'm sorry to be so restrictive, but this is the only glue stick that won't ruin your work, or worse-- your machine!
- a piece of corrugated cardboard or foamcore. How big is a piece? A FQ size would be terrific. Can you use flat cardboard? Nope!
- 1 yard water soluble stabilizer (NOT ultra Solvy-- it's too thick!) 12" or 19" wide, need 3-4 yards of the 12", or 2-3 yards of the 19"
- 1 yard craft or wool felt in a color you like. 36" Wide. We will be using this as the base for some weaving, and you might see some felt peeking through the weaving.
- Fabric! We will be experimenting with many different techniques, resulting in several samples. You don't "need" to buy any special fabric, but if you want me to give you permission to shop... go shopping!! Please bring at least one fat quarter in a solid-reading fabric (a mottled batik or hand-dye works great! True solid cottons are always a good choice, too) Bring some of your leftover strips, leftover binding, and fat quarters. Got batiks and/or hand-dyed fabric? You don't need a lot, so bring what you have! Is there any unusual fabric in your stash, like velvets, chiffons, sparkly stuff? Bring it! You won't need more than 1/8 yard of any one fabric and sharing will be encouraged!

## Basic sewing supplies:

- ~ A reliable sewing machine which can be set up for free-motion stitching. You are responsible for having a good working relationship with your machine!
- ~ A portable sewing machine extension table-- you know, those plexiglass mini tables that fit around your machine to extend the sewing bed? If you don't have one, and you can't find one to borrow you will still have fun and be as productive as everyone else. It's just a tad easier with one, so I put it on the supply list!
- ~ Sewing machine feet: quilter's 1/4 foot, zig-zag foot, free-motion/darning foot, walking foot
- ~ Iron-- to fuse the fabric to the interfacing, etc.
- ~ Fabric scissors, large and small (I like the squeeze type), and small thread snip scissors
- ~ Threads: to color coordinate with your fabrics
- ~ Bobbins, needles, pins
- ~ Machine quilting gloves or finger cots. I highly recommend Machingers.
- ~ Rotary cutter, mat, and rulers.
- ~ Chocolate. It's very useful. Also, you can bribe the teacher with it.

## **Trapped Fibers Class Supply List—Saturday**

Create your own art fabric using fabric, fiber, and film. Borrowing supplies from other fiber media, we will experiment with new techniques and materials to discover exciting ways to use our sewing machines to

personalize the very basis of our quilts-- our fabric! Luscious silks, shimmering chiffons, even rag-tag strips and threads become one of a kind fabrics under the sewing needle. Use the samples we make to add

pizzazz to your art quilts, wearables, postcards, and more. While this is primarily a technique class, we will create various sized samples that will be useable to create projects, including a fat quarter sized piece of Trapped Fiber, which we can use to create various treasures!

### **Here's what you need:**

\*18" x 22" piece of heavy fusible interfacing, such as Timtex, Peltex, Sculpt Heavy. It's useful to have the interfacing fusible on both sides. If you can only fuse on one side, please bring some Aleene's Tacky glue to glue fabric to the other side of the interfacing.

\*2 (or more!) yards water soluble stabilizer (NOT ultra Solvy-- it's too thick!) 1 1/2 yard fabric to fuse on each side of the interfacing. Note: Use pretty fabric for one side; the other side will get covered up, so you can use an ugly fabric or even some orphan blocks, as long as it has color you like!

\*Aleene's Tacky glue. It's a great, washable glue. My tip: I also buy some Elmer's Glue, and dump it out, then replace it with the Aleene's glue-- the flatter bottle shape of the Elmer's is easier on my hands if I'm going to be doing a lot of squeezing!

\*Avery brand Removable Glue Stick. No other brand or type! You might have to order this from a stationery store, and you are more than welcome to share with others. I will bring a few to share/sell. I'm sorry to be so restrictive, but this is the only glue stick that won't ruin your work, or worse-- your machine!

### **For the Trapped Fiber:**

~Strips and bits of batik and hand-dyed fabric (it's easiest to use fabric that is printed on both sides)

~Fancy yarns, metallic threads, etc.

~Silk flowers

~Bits of mixed media (that can be sewn through!) like papers, felts, and leftover bits from other projects

~Fancy bits of fabrics-- velvets, metallic mesh, chiffons

~Spinning fibers-- throwsters silk waste, roving, Angelina, etc. (don't buy this-- bring it if you have it or can beg some from a spinning friend!) Interesting yarns at least 2 yards long. We will be creating a scarf, but please save yourself some frustration and DON'T pre-cut lengths. It tangles no matter how careful you are... take my word for it! Get together with friends and share yarns! Buy some on sale at your local yarn store, or even at the thrift shop!

~ 1/2 yard of black tulle (not harsh netting, but the softer tulle) Black works 90% of the time, and the other 10% of the time, it's still a fine choice. If you plan on working with only very light hued fabrics, bring 1/2 yard of offwhite or tan, too. It's cheap, and you might like the lighter color better!

### **Basic sewing supplies:**

~A reliable sewing machine which can be set up for free-motion stitching. You are responsible for having a good working relationship with your machine!

~A portable sewing machine extension table-- you know, those plexiglass mini tables that fit around your machine to extend the sewing bed? If you don't have one, and you can't find one to borrow you will still have fun and be as productive as everyone else. It's just a tad easier with one, so I put it on the supply list!

~Sewing machine feet: quilter's 1/4 foot, zig-zag foot, free-motion/darning foot, walking foot

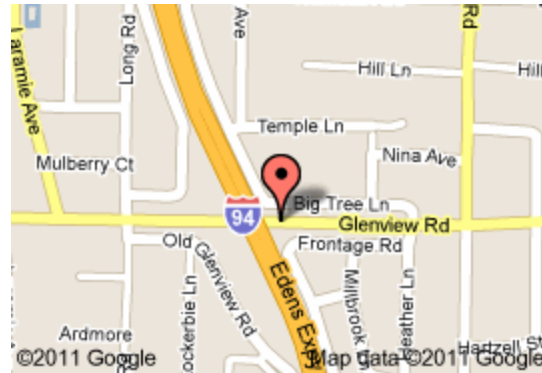
~Iron-- to fuse the fabric to the interfacing.

# Meeting & Workshop Locations

All general Thursday night meetings (with the exception of December & June Potlucks) will be held at our Beth Hillel in Wilmette - doors open at 6:45. Meetings start at 7:30.

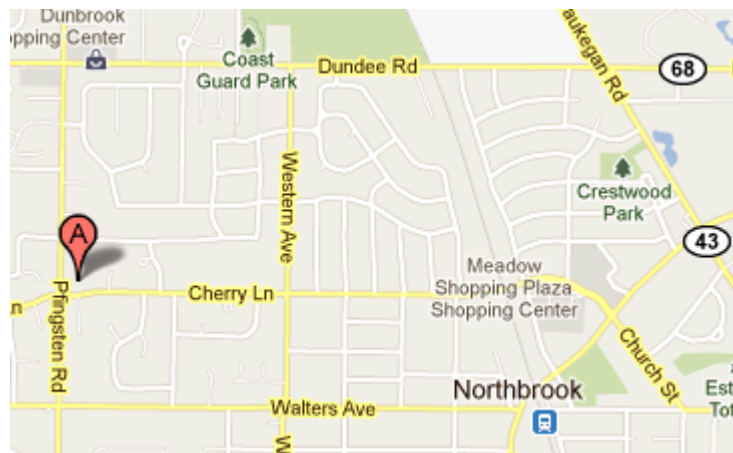
Please do **not** arrive before 6:30PM.

**Beth Hillel Congregation Bnai Emunah**  
**3220 Big Tree Lane**  
**Wilmette, Illinois 60091**



All regularly scheduled workshops, service days, and December & June Potlucks will be held at:

**Gloria Dei Lutheran Church**  
**1133 Pfingsten Road**  
**Northbrook, IL 60062**



**Board meetings** are held on the 3rd Monday at 7:15 pm at the Wilmette Public Library,  
 1242 Wilmette Ave, Wilmette

## CONTACT INFO:

You can **send mail** to our post office box at: Illinois Quilters Inc. , P0 Box 39, Wilmette, IL 60091



# Of Interest to Quilters

Sept 6-8, 2012 Madison, WI	Madison Quilt Expo	<a href="http://wiquiltexpo.com/">http://wiquiltexpo.com/</a>
09/22 - 23, 2012 Liberty Jr. High School - 151 Lenox St. New Lenox, IL	Heritage Quilters "Harvest of Quilts"	<a href="http://www.heritagequiltersguild.com">www.heritagequiltersguild.com</a>
Sept. 8-9, 2012 Metropolis, IL & Paducah, KY	Super City - Quilt City Connection - A <i>Celebration of the Arts between Two Cities.</i>	<a href="http://www.metropolistourism.com/content/view/113/125/">http:// www.metropolistourism.com/ content/view/113/125/</a>
Oct 5-6, 2012 <a href="#">Crete Reformed Church</a> 24755 S. Country Lane Crete Illinois 60417	<i>Yesterday, Today, And Tomorrow: A heritage of Quilts</i>	<a href="http://www.heritagequilts.org/quilt_show_2012">http://www.heritagequilts.org/ quilt_show_2012</a>
Sept 29-30, 2012 3614 Maple Ave, Terre Haute, IN 47804	Quilts Along the Wabash 2012	
Sept 29-30, 2012 <b>Sycamore Middle School</b> 150 Maplewood Drive IL Rte. 23 and Maplewood Drive Sycamore, IL 60178	Harvest of Quilts Show DeKalb County Quilter's Guild	<a href="http://www.dcgq.org/quiltshowpages/quiltshow2012.html">http://www.dcgq.org/ quiltshowpages/ quiltshow2012.html</a>

## Did you know?

That each member is entitled to one free ad per year in the Oak Leaf? You can use it to advertise any goods or services for sale. Please submit your ad (1/4 page or smaller) to [info@illinoisquilters.com](mailto:info@illinoisquilters.com).

Size	Monthly	Yearly
Business Card	\$5	\$30
¼ Page	\$8	\$60
½ Page	\$15	\$120
Full Page	\$30	\$240



**Illinois Quilters, Inc.**  
**P.O. Box 39, Wilmette, IL 60091-0039**

**MEMBERSHIP APPLICATION**  
**2012-2013**

**Membership Directory Deadline: September 15, 2012**

*– Directory listing is essential for Fine Art of Fiber participation –*

please PRINT clearly:

today's date \_\_\_\_\_

name (as you want on name badge & in directory) \_\_\_\_\_

address \_\_\_\_\_

city \_\_\_\_\_ state \_\_\_\_\_ ZIP \_\_\_\_\_

preferred phone: (\_\_\_\_\_) \_\_\_\_\_ secondary phone: (\_\_\_\_\_) \_\_\_\_\_

e-mail address\* to receive Oak Leaf \_\_\_\_\_

(ok to use my email, but please don't print it in the directory: \_\_\_\_\_)

**\*NOTE: for Oak Leaf via regular mail add \$10.00 below.**

\*\*\*\*\*

please indicate whether you are: new\*\* to IQI \_\_\_\_\_ renewing \_\_\_\_\_ returning after absence \_\_\_\_\_

\*\* how did you learn of IQI (friend, online search, etc.)? \_\_\_\_\_

FEES: \_\_\_\_\_ \$45 (thru 6/30) or \$50.00 (after 7/1)  
 \_\_\_\_\_ \$10.00 if Oak Leaf should be printed & mailed  
 \_\_\_\_\_ (discretionary) Library Fund

Total \$ \_\_\_\_\_ paid by cash \_\_\_\_\_ / check # \_\_\_\_\_

\*\*\*\*\*

IQI is a volunteer organization and operates effectively only with everyone's help. Four hours of service per year is a suggested share. Please choose activity area/s where you might like to help:

_____ board ( I would be willing to serve)	_____ potluck help, Dec. &/or June mtg.
_____ demonstrate a technique – explain on pg. 2	_____ challenge project for members
_____ Fine Art of Fiber show/boutique	_____ quilt-in (members' weekend retreat)
_____ host a speaker in my home	_____ raffle quilt (help make)
_____ host at a workshop	_____ raffle quilt (help show at other guilds)
_____ help at library table at meetings	_____ service projects - in a group or at home
_____ help at membership table at meetings	_____
_____ nominating committee for next board	_____

## IQI Workshop Registration Form for 2012/2013

Name: \_\_\_\_\_

Phone: \_\_\_\_\_ E-mail address: \_\_\_\_\_

Non-members only: \_\_\_\_\_  
Address City St. Zip

For each workshop, please circle the Member or Non-Member Price. Total amount remitted with each form should be the total of all circled amounts.

Date	Workshop Title	Member	Non-Member
10/05/12	Weaving on your Sewing Machine	\$45.00	\$55.00
10/06/12	Trapped Fiber™ Techniques	\$45.00	\$55.00
1/4/13	APPRAISALS-SEPARATE SIGN UP LIST		
01/04/13	Wool Applique-Fruitopia MORNING ONLY PLUS \$40 kit fee (very comprehensive!)	\$25.00	\$30.00
01/05/13	Quilts with Great Edges PLUS \$45 kit fee (very comprehensive!)	\$45.00	\$55.00
02/08/13	Embellishing Quilts Kit fee (if any) TBA	\$45.00	\$55.00
02/09/13	Easy Funky Piecing Kit fee (if any) TBA	\$45.00	\$55.00
03/08/13	How to Start with an Art Quilt	\$45.00	\$55.00
03/09/13	Surface Design for Art Quilts	\$45.00	\$55.00
4/5/13	McTavishing	\$45.00	\$55.00
4/6/13	Quilt as Desired	\$45.00	\$55.00
5/3/13	UFO Session 1 Friday 9-5	\$20.00	\$25.00
5/3/13	UFO Session 2 Friday 6-10	\$10.00	\$15.00
5/4/13	UFO Session 3 Saturday 9:30-5:30	\$20.00	\$25.00
5/3-5/4	UFO All 3 Sessions (\$5 Discount)	\$45.00	\$60.00
	<b>TOTAL AMOUNT DUE:</b>		

Supply lists available on the IQI website: [www.illinoisquiltersinc.org](http://www.illinoisquiltersinc.org)

Bring a completed form with check or cash to a monthly meeting or send completed form with a check payable to IQI to:

Georgia Cibul  
11 Winfield Drive  
Northfield, IL 60093  
847-441-5678

Refunds are available up to 30 days in advance minus a \$5 per-workshop-day handling fee. Requests for refunds must be in writing and sent to workshop registration coordinator.



**Illinois Quilters, Inc.**  
**27<sup>TH</sup> ANNUAL QUILT-IN REGISTRATION**  
**January 25-26-27, 2013**  
 Divine Word Conference Center, 2001 Waukegan Rd, Techny, IL 60082

Name: \_\_\_\_\_ Q-In first-timer? \_\_\_\_\_

Address: \_\_\_\_\_

City, State, Zip: \_\_\_\_\_

Phone: \_\_\_\_\_ EMAIL: \_\_\_\_\_

I prefer to stay in a:    **Single**        **Double**        **Triple**        (pls circle your preference)

I would like to room with: \_\_\_\_\_

Please note: we will accommodate mutual rooming choices *when deposits are received from all parties for that room.*

Weekend cost per person, includes 4 meals: \$220 in a triple / \$230 in a double / \$260 in a single room, if available. There are only a few single rooms. Medical reasons carry priority, just let us know: \_\_\_\_\_

I am a current member of IQI:         Yes.        No:      *add \$25 to member cost shown.*  
*Non-member registrations will be held, in order, for processing beginning December 1<sup>st</sup>.*

A deposit secures your reservation: please attach a check for \$130, payable to IQI. Bring your registration and check to the Quilt-In table during an IQI meeting or mail them to: Chris Deering, 7310 N Claremont, Chicago, IL 60645. The balance will be due by Jan 15, 2013.

Work table preference:         India Rm (40-42 people) /      Rm 406 (18-20 p.) /      either

Workshops are listed here and described separately. There is no fee, but there may be a pattern or supply kit cost. Please indicate your first and second choices below. Spaces are filled as reservations are received. Any questions? Contact Chris Deering at 773 761-7497 (evenings) or Cynthia Churchwell at 847 899-7417.

My Preferences	Day/Time	Workshop	Teacher
	Fri/ongoing	Mystery Quilt	Harriet Bertsche
	Sat. AM	Folded Flowers Technique	Kristin Woods
	Sat. AM	Magic Squares Lap Quilt *	Laurie Gorton
	Sat. PM	Needle Felted Case - <i>supply kit needed</i>	Barbara Feinberg & Linda Feinberg
	Sat. PM	Cutting Mat Tote & Potato Chip Bag*	Trisha Mack
		<i>*pattern needed</i>	

For committee: reg. # \_\_\_\_\_ rec'd on \_\_\_\_\_ // India \_\_\_\_\_ 406 \_\_\_\_\_ no pref \_\_\_\_\_

dep \$ \_\_\_\_\_ chk # \_\_\_\_\_ // bal \$ \_\_\_\_\_ rec'd \_\_\_\_\_ ck # \_\_\_\_\_ / D T S # \_\_\_\_\_

**Fine Art of Fiber 2012**  
**Silent Auction Submission Form**

**Name** \_\_\_\_\_ **Phone No.** \_\_\_\_\_

**Donation** \_\_\_\_\_ **Estimated Value \$** \_\_\_\_\_

**Minimum Bid \$** \_\_\_\_\_

**Member of: IQI** \_\_\_\_\_ **NSNG** \_\_\_\_\_ **WGNS** \_\_\_\_\_

Your Guild(s) will be credited with the funds raised from your item.

**Will you have other items for sale in:**

**The Boutique?** \_\_\_\_\_ **Exhibition?** \_\_\_\_\_

**Weavers' sale?** \_\_\_\_\_

A copy of this form must be attached to all donations.

**Thank you for your participation in this fundraiser for your Guild(s).**

**IQI Contact:**

Chris Deering      7310 N Claremont Ave, Chicago IL 60645  
(773-761-7497; chris@toldme.com)

**NSNG Contacts:**

Gretchen Alexander 1749 MacLean Court, Glenview IL 60025  
(847-998-6040; Gretchen.alexander@sbcglobal.net)

Jan Swimmer      5243 Hilltop Road, Long Grove IL 60047  
(847-821-0361; jandesign22@comcast.net)

**WGNS Contact:**

Marilyn Lindeman      1570 Asbury, Evanston IL 60201  
(847-869-0698; marilynindeman@mac.com)

Attach photo here. (Please mark top of photo)

## Fine Art of Fiber Exhibit Entry Form

### Entry Data (Due September 15, 2012)

Please fill out completely and legibly. We cannot call you for further information.

**Name:** \_\_\_\_\_ **Guild(s):** \_\_\_\_\_

**Address:** \_\_\_\_\_

**City, State, Zip:** \_\_\_\_\_

**Phone # :** \_\_\_\_\_ **Email address:** \_\_\_\_\_

**Title** (not "untitled" please): \_\_\_\_\_

**Multiple Entry Priority #:** \_\_\_\_\_ of \_\_\_\_\_ **Guild Project/Challenge:** ☐ No ☐ Yes

**Entry Size** (accurate measurements in inches): **Horizontal** \_\_\_\_\_ **Vertical** \_\_\_\_\_

**Detail any special hanging or other display requirements (including any display props you will provide):**

### Program & Show Card Data

#### List techniques used to make piece

e.g. hand woven, machine quilted, hand dyed, hand spun, machine embroidered, hand knitted, how it is embellished etc.:

**Describe what you most want people to know about entry** (note: this copy will be on show display card hung next to the entry)

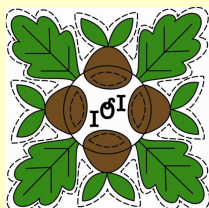
**Design source** (e.g. original, pattern, kit, etc.): \_\_\_\_\_

**FOR SALE?** (25% of sale goes to Guilds/CBG.) ☐ No ☐ Yes **Sale price:** \$ \_\_\_\_\_

Your items totaling more than \$600 that sell during the show will be reported to the IRS on a 1099. Because of this new requirement, a W9 (tax id form) will be sent to you with your acceptance letter. 'For sale' items not accompanied by a completed IRS form W9 will not be sold.

The undersigned entrant hereby agrees to hold IQI/NSNG/WGNS/Chicago Botanic Garden harmless for any and all damage or loss of any property left in their care, custody or control. (Check your home-owner insurance policy for coverage.) I have read and agree to the Exhibit Rules and Requirements.

**Signature:** \_\_\_\_\_ **Date:** \_\_\_\_\_



# 2012-2013



## Board and Committee Contacts

President	Esther Behnke	<a href="mailto:president@illinoisquilters.com">president@illinoisquilters.com</a>
VP Programs	Roberta Levin	
VP Contracts	Angel Sidor	
Treasurer	Randy Menakes	
Secretary	Donna Derstadt	
Membership	Katie Ordoover Patti Carrington	<a href="mailto:membership@illinoisquilters.com">membership@illinoisquilters.com</a>
Oak Leaf Editor	Ellen Pomes	<a href="mailto:info@illinoisquilters.com">info@illinoisquilters.com</a>
Fine Art of Fiber	Tina Smith Judy Curtis Ardis Mistak	
Workshop hosts	Diana Burrows	
Workshop registration	Georgia Cibul	<a href="mailto:workshops@illinoisquilters.com">workshops@illinoisquilters.com</a>
Member at Large	Jennie Gordon	
Committee Chairs		
Library	Barbara Feinberg, Linda Feinberg Judith Maffris	<a href="mailto:library@illinoisquilters.com">library@illinoisquilters.com</a>
Service/ Friendship	Lynn Bradburn Diana Burrows	
Quilt-In	Chris Deering Cynthia Churchwell	
2013 Raffle Quilt	Donna Derstadt Sue DeVarco Linda Yatzor	
2014 Raffle Quilt	Position Open	
Publicity	Mary Meyers	
Website	Ellen Pomes	<a href="mailto:info@illinoisquilters.com">info@illinoisquilters.com</a>
Challenge	Quilt Linda Howard Anne Hart Diane Capitani (assistant)	