

IQI

PO BOX 39

WILMETTE, IL 60091

WEBSITES:

[WWW.ILLINOISQUILTERS.ORG](http://WWW.ILLINOISQUILTERS.ORG)

[WWW.ILLINOISQUILTERSINC.ORG](http://WWW.ILLINOISQUILTERSINC.ORG)

[WWW.ILLINOISQUILTERS.COM](http://WWW.ILLINOISQUILTERS.COM)

# The Oak Leaf



VOLUME 32, ISSUE 2

OCTOBER, 2012

## COMING UP!

- **Oct 4, 2012 Meeting:** Location change!!! Meeting will be at Gloria Dei in Northbrook this month —Susan Italo—Wild Onion Studio
- **Oct. 5,6 2012 Work-shops:** Susan Italo—Gloria Dei
  - Friday: Weaving on your sewing machine
  - Saturday: Trapped Fibers
- **Nov. 1-4 Fine Art of Fiber** - Chicago Botanic Garden
- **Dec 6, 2012**—Holiday Potluck—Gloria Dei
- **January 3, 2013**—**Meeting:** Kathy Kansier—Tell me about my Grandma's Quilt

### Inside this issue:

<a href="#">October Workshops</a>	2
<a href="#">Fine Art of Fiber , Service</a>	3
<a href="#">Fine Art of Fiber</a>	4
<a href="#">Quilt In News</a>	5
<a href="#">Library</a>	6
<a href="#">Program Calendar</a>	8
<a href="#">Workshop Descriptions</a>	9-12
<a href="#">Oct Workshop Supply List</a>	13-14
<a href="#">Location information</a>	15
<a href="#">Workshop Reg. Form</a>	16
<a href="#">Board/Committee Contacts</a>	17

**October Meeting Location!!!**  
**Gloria Dei**  
**Northbrook, IL**

## President's Message

Welcome fellow quilters. This month's speaker is the renown quilter Susan Italo of Wild Onion Studio. Her lecture sounds really exciting and her workshops on weaving on your own sewing machine and on trapped fibers is miss-at-your-own-risk!

Now that summer is officially over, and so is gardening and harvesting, we can concentrate on our quilting. After three grandchildren notified me of

they're engagements, you will find me hard at work on wedding quilts. I've turned in my donated items to the FAOF's Silent Auction already. Have you done so, too? We all need to participate in order to make the Silent Auction a huge success again. And don't forget to make items to sell in the boutique. Whether you have only a few items or lots of items to sell, IQI will get 15% of the sales

while you get 75%. The Membership Directory will be out soon. The bylaws and lists of former presidents of IQI have been removed from it and are on our website. This way, the directory can be printed economically. Contact Katie Ordovery if your information needs to be updated.

Keep on Quilting,  
Esther Behnke  
Email: [president@illinoisquilters.com](mailto:president@illinoisquilters.com)



## October Meeting @Gloria Dei

We welcome Susan Italo's lecture and trunk show on Thursday October 4 at **Gloria Dei in Northbrook (please note change of lecture location for this month only!- back to Beth Hillel in January)**. We will have five IQI members modeling her beautiful wearable art. She will also show an art quilt which is about to be acquired by a Southern California museum, so this is an excellent opportunity to see it up close. Susan is a former IQI member. As of 9/21/12, there are still opening in the workshops- just a few left on Saturday, more on Friday. Roberta Levin

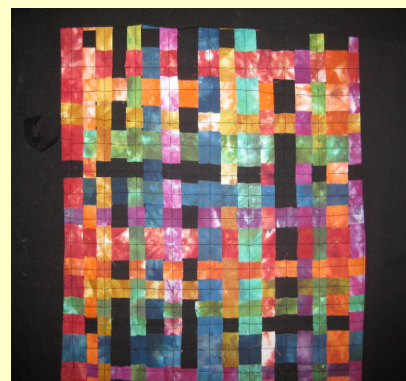
## October workshops—Susan Italo

Supply lists can be found on page [13-14](#) of this newsletter and on our website.

### Weaving on your Sewing / Quilting Machine

October 5, 2012

Weaving combines texture and color with fibers. Traditionally created on a loom, weaving with a sewing or quilting machine allows for endless possibility of creative play. Whether you want to create a background fabric for appliqué, some interesting alternate blocks for piecing, or an entire wearable art piece, weaving will add appeal and interest no matter what color or fabric you use. We will discuss many variations of weaving techniques and fabrics in this unique class.



### Trapped Fibers

October 6, 2012

Create your own art fabric using fabric, fibers, and film. Borrowing supplies from other fiber media, we will experiment with new techniques and materials to discover exciting ways to personalize the very basis of our quilts – fabric! Luscious silks, shimmering chiffons, even ragtag strips and threads become one-of-a-kind fabrics under the sewing needle. Add pizzazz to your art quilts, wearables, postcards, and more



# Fine Art of Fiber – Boutique

At the time of this writing, there were still some spots available in the boutique if you have quilts or other items to sell. If you do, please send in an entry form- they are available on the [www.fineartoffiber.org](http://www.fineartoffiber.org) website- just send them to the address on the form. Also, please give me a call or send me an email to let me know you've sent it and I will let Carol Levenberg know that it is on the way.

Roberta Levin ([rlevin2000@aol.com](mailto:rlevin2000@aol.com))



## Silent Auction—Fine Art of Fiber!!!



One more month before the Fine Art of Fiber! Plenty of time to get your Silent Auction items in. Please consider donating an item you've made to this important guild fundraiser. And as a bonus to you, if you have items in the Boutique, we'll let the bidders know, so they can buy even more!

Bring items and forms (on the FAOF site) to the October meeting - I'll be ready for them!

Thanks! Chris Deering

## Next Service Day—October 20, 2012

@ Gloria Dei.

There will be quilts that need the bindings hand sewn on, pre-cut quilt squares to sew up--this works better if 2 people get together and work on it. We have African animal quilt tops that need borders--olive green would be good and we'd like people to bring some if they can. There will also be fabric to make string quilt squares. So there will be plenty to do, and of course there will be premie quilts to machine quilt.

## Fine Art of Fiber Educational Table

There will be sign up sheets for the educational table at the quilt show at the October meeting, I will be at the workshop table, so come and see me and join us to show off your quilting talents.

Georgia Cibul 847-441-5678



# FINE ART OF FIBER

## It is show time!

Have you volunteered to help? If not, do so NOW. We need members to help sell raffle tickets and take silent auction bids. We need members to wear white gloves and tell interested visitors about the pieces in the show. We need members in the education area.

Here is how you volunteer: 1) Sign up at the October meeting. Or email Phyllis Paulo at [PhylPaulo@aol.com](mailto:PhylPaulo@aol.com) (her phone is 773/339-8359). Let us know if you are not a member of the Chicago Botanic Garden and you will receive a parking pass good for the whole show (\$20 value). If you need to sit, please advise us as well.

2) For education, contact Georgia Cibul at 847/441-568 and she will schedule you.

Sell tickets for our raffle quilt. If you bring monies to the show, please put them into an envelope marked pre-show sales and we will credit appropriately. Then put the drawing stubs into the box. Remember, we handle those monies separate from show sales and often do not process until after the show ends. That means stubs in the same envelope can be overlooked.

Silent auction will take donations right up to the time of the show. Have something ready now – it goes to Chris Deering. Can't make the meeting, then give your donation to a friend to take. Or send it to Chris at 7310 N. Claremont Ave., Chicago, IL 60645. This is a favorite part of the show with our visitors, so the more we have to auction, the better!

Posters and postcards are meant to be used by you. Please take them and distribute to local community bulletin boards or send them to friends and family. Plus, do not forget your work colleagues. Besides, Ardis Mistak will adore you as she won't have to take them back home. Need some, but won't be at the meeting, let her know. Her email is [Ard-is1929@comcast.net](mailto:Ard-is1929@comcast.net); phone is 847/480-1187. She can send them to you!

With your help and cooperation, Fine Art of Fiber will be another success. Thank you in advance.

The Fine Art of Fiber Committee – Jan Aaron, Judy Curtis, Ardis Mistak and Tina Smith

## Quilt-In Spaces are Filling Fast !

At this time there is room for about another 13 quilters! You may pick up a registration form at the October membership meeting or download it from the IQI website, where you also will find descriptions of the optional classes. Room requests will be processed once registrations and deposits for all roommates (per room) are received. For a double room the per-person rate is \$230, for a triple it is \$220. Non-member registrations will be processed for remaining spaces December 1st.



As a reminder, the retreat is Jan 27-29, 2013, at Techny Towers Conference Center in Northbrook.

The weekend fee includes two nights' lodging, 4 meals (3 on Sat. plus Sun. brunch), and lots of sewing, fellowship and inspiration. We hope to see you there.

If you registered already, please stop at the Quilt-In table October 4 to be sure we have your class preferences.

Chris Deering and Cynthia Churchwell  
773 761-7497 847 441 7417

**Quilt Connection** of Chicago would like to thank IQI for allowing us to display our vintage redwork raffle quilt at September's meeting.

The lucky winner was Cherilynn from Chicago. It was so nice to see IQI members come out to see our show. We plan to have another one in two years- hope you will join us then!

Roberta Levin



**Daughter  
of 2012  
Garage**

The IQI Garage Sale is returning at the June potluck. De-clutter your sewing space by making a donation of books, magazines, fabrics, patterns, gadgets, what have you!

Jennie Gordon will collect your paraphernalia at the October meeting.





# No IQI Library in October!



## IQI Library News

Here is the next installment of samples from our library. In the RED marked section on Embellishment / Design / Color (Theory/Dying) we wanted to showcase a few of the many books available for checkout next year.

The October meeting will be held at Gloria Dei and will not have the library available.

**Books checked out at the September meeting will be due at the January 2013 meeting.**





**September's Schoolhouse** was a great success. Thank you to our presenters for the evening -

- **Linda Howard**, representing Quilter's Heaven, demonstrated quick and easy fusible placemats
- **Jane Healy** showed us a technique most, if not all of us, had never seen before- fabric dyeing using a colander, ice cubes and Procion dyes
- **Barbara Feinberg** showed us a simple, no fuss, invisible way to close the quilt binding
- **Diana Burrows** demonstrated hand quilting;
- **Ellen Pomes** showed us foundation pieced flying geese;
- and **Jan Aaron** showed us how to square up our quilts AND how to put a hanging sleeve on our quilt.

Thanks again, you made our evening fantastic!

Roberta Levin

### Illinois Quilters, Inc. Financial Report August 31, 2012

#### Checking Account:

Opening Balance, 7/01/12	\$ 11,802.60
Income	1,120.00
Cleared Expenses	3,602.08
Closing Balance, 6/30/12	\$ 9,320.52
Uncleared checks	\$ 125.00
Less Anticipated Expenses	.00
Available Cash	\$ 125.00

#### Savings Account:

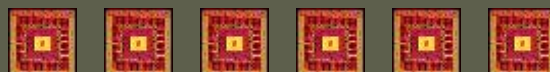
	\$ 9,913.70
Cash on Hand, 6/30/12	\$ 19,234.22

Submitted,  
Randy Menakes, Treasurer

### January Quilt Appraisals

We have many spaces left for the quilt appraisals at the January workshop. Times are for Friday afternoon and Sunday. I will have a sign up sheet at the October meeting at the workshop table and also sign up for some of the great workshops this year.

Georgia Cibul 847 441 5678





## IQI 2012-2013 Program year



<b>October</b>	
<b>Meeting:</b> <a href="#">Susan Italo - Trunk Show</a>	Oct. 4, 2013
<b>Workshop:</b> <a href="#">Susan Italo - Weaving on your Sewing / Quilting Machine</a>	Oct. 5, 2013
<b>Workshop:</b> <a href="#">Susan Italo - Trapped Fiber Techniques</a>	Oct. 6, 2013
<b>November</b>	
<b>Fine Art Of Fiber</b>	Nov. 1-4, 2013
<b>December</b>	
<b>Meeting:</b> December Potluck	Dec. 6, 2013
<b>January</b>	
<b>Meeting:</b> <a href="#">Kathy Kansier - Tell me about my Grandma's Quilt</a>	Jan. 3, 2013
<b>Workshop:</b> <a href="#">Kathy Kansier - Wool Appliqué Frutopia</a>	Jan. 4, 2013 - AM
<b>Workshop:</b> <a href="#">Kathy Kansier - Appraisal Fair</a>	Jan. 4, 2013
<b>Workshop:</b> <a href="#">Kathy Kansier - Quilts with Great Edges</a>	Jan. 5, 2013
<b>IQI Annual QUILT-IN</b>	Jan 27-29, 2013
<b>February</b>	
<b>Meeting:</b> Mary Lou Weidman - Out of the Box	Feb 7, 2013
<b>Workshop:</b> Mary Lou Weidman - Embellishing Quilts	Feb 8, 2013
<b>Workshop:</b> Mary Lou Weidman - Easy Funky Piecing	Feb 9, 2013
<b>March</b>	
<b>Meeting:</b> Virginia Carlson - How I Got Creativity and Didn't Know it!	March 7, 2013
<b>Workshop:</b> Virginia Carlson - How to Start with an Art Quilt	March 8, 2013
<b>Workshop:</b> Virginia Carlson - Surface Design for Art Quilts	March 9, 2013
<b>April</b>	
<b>Meeting:</b> Ann Pigneri - How to Create Stunning Quilts	Apr 4, 2013
<b>Workshop:</b> Ann Pigneri - McTavishing	Apr 5, 2013
<b>Workshop:</b> Ann Pigneri - Quilt as Desired	Apr 6, 2013
<b>May</b>	
<b>Meeting:</b> Jan Krueger and Linda Marcou Trunk Show: Scrapbusters	May 2, 2013
<b>Retreat:</b> Bust that Stash Quilt Event	May 3-4, 2013
<b>June</b>	
<b>Annual Meeting and Potluck</b> At Gloria Dei	June 6, 2013



# 2012-2013 Programs and Workshops

## Sign Up Today!!!

**This year workshop fees have  
DECREASED!**

**Workshops generally cost only \$45 for members**

October, 2012– Susan Italo  
Wild Onion Studio  
Lecture & Two Full Day Workshops  
See pg 2 for full details on these workshops



January, 2013— Kathy Kansier

Kathy Kansier is a quilt teacher, quilt show judge and an AQS certified quilt appraiser. In 2008, she received the prestigious Jewel Pearce Patterson Award for Quilt Teachers. Her quilts have been exhibited internationally and she has won both regional and national awards. She has appraised nearly 2,000 quilts and has judged over 8,000 quilts. Multi-talented Kathy will present her lecture "Tell Me About my Grandma's Quilt" on Thursday, January 3<sup>rd</sup>, 2013. She will discuss a selection of 20 quilts.

### FRIDAY AM WORKSHOP: WOOL APPLIQUE Fruitopia

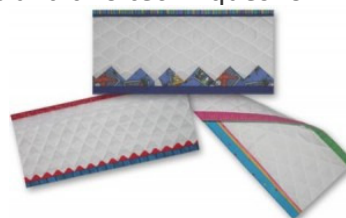
Students will learn to work with wool for applique. A variety of hand stitches will be taught for finishing the edges of the wool motifs.



**FRIDAY AFTERNOON: APPRAISAL FAIR-**  
Kathy will appraise quilts by appointment.

### SATURDAY WORKSHOP-QUILTS WITH GREAT EDGES

You will learn a variety of impressive techniques to complete the edges of your quilts. You will make and go home with samples including a double fold binding with mitered corners and connected tails, rick-rack binding, reversible binding, fused binding, prairie points, scallops and two techniques for making piping.



# February 2013

## Mary Lou Weidman Mary Lou Quilts



**Mary Lou Weidman** has traveled the world teaching workshops that share her happy, whimsical quilting style. She has written four large books: *Whimsies and Whynots*, *Everyday Angels*, *Quilted Memories* and *Out of the Box*, and she also owns a pattern company. Her technique books *Hoochy Mama Quilts* and *Flower Power* are popular with her students when she travels and teaches workshops on her style.

Mary Lou will present her lecture and trunk show "Out of the Box". This lecture discusses how to get out, stretch, and stay out of the box. How to learn new things, go new directions and take the road less traveled.

### FRIDAY WORKSHOP:



#### EMBELLISHING QUILTS

Bring a favorite quilt that has been quilted, your favorite buttons, beads, rickrack, trim, flosses, and see what wonderful glorious things we can do to make a simple quilt a piece of art and excitement. Mary Lou's embellished quilts have won many awards. Once you start embellishing quilts, you won't be happy with keeping them plain. Come and learn the basics and some exciting new ideas that can make something that's ho hum into TERRIFIC art!



### SATURDAY WORKSHOP EASY FUNKY PIECING (EASY PIECING THE FUN WAY)



Mary Lou has designed many "things" that are all pieced the "hoochy way" and they are fabulous and make terrific quilts with bright fabrics and a will to be creative and "out of the box." Let her teach you how while you make fish, flowers, faces, houses, toys, cats and loads of other fun things.

Website: [www.marylouquilt designs.com/](http://www.marylouquilt designs.com/)

Blog: [marylouweidman.blogspot.com/](http://marylouweidman.blogspot.com/)



**March 2013**

**Virginia Cruz Carlson**



We are so fortunate to host IQJ's own Virginia Carlson. An award-winning art quilter, Virginia will provide us with a lecture and slide show entitled "How I Got to Creativity and Didn't Know It". She will show the progression of her work and will share the comments that she received during this process. Also to be discussed is how joining an art gallery sped up that progression.



**FRIDAY WORKSHOP:**

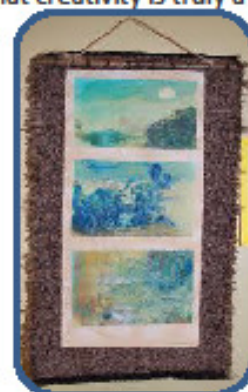
**HOW TO START WITH AN ART QUILT**

This class will take the fear out of starting an art quilt. Using your favorite fabrics, thread, beads, buttons and embellishments, (paintsticks and fabric markers are welcome too), you will go through some exercises that will develop confidence in your creativity. Some will be unusual, just to show you that creativity is truly a muscle that needs exercising.



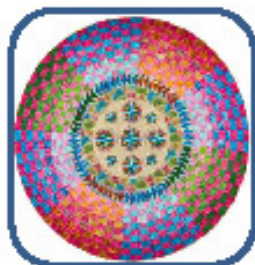
**SATURDAY WORKSHOP**

**SURFACE DESIGN FOR ART QUILTS**



This class will explore the various types of surface design. In this workshop, we'll be bringing fabrics we love AND fabrics we're not so in love with. Traditional and nontraditional fabrics and photos on fabrics will be used to show how surface design can change the entire look of the fabric and create a unique look for your art quilt. We'll be working with decorative and metallic threads and layering sheer fabrics to change the look of the fabric and create shadow illusions.





**April 2013**

**Ann Pigneri**



Ann Pigneri is a quilt creator, designer and teacher living in Louisville, KY. She loves to design and create her own quilts and really enjoys color. She loves the interaction of color and design to create a visually stimulating and pleasing quilt. In April, she will present her lecture and trunk show, "How to Create Stunning Quilts", which is a fun and exciting lecture to aid you in creating stunning quilts! Why make a ho hum quilt when it takes just as much time to make an awww...how did you do that quilt? Learn some easy to understand and simple principals to aid you in future color selection to make your quilts have pizzazz. Even traditional quilts can be enhanced with fantastic color selection!

**FRIDAY WORKSHOP:**

**McTAVISHING & BEYOND**



Ann is certified to teach the McTavishing method of quilt fill created by long arm quilter Karen McTavish. You will learn the basic McTavishing method, mini-McTavishing and Cyclone McTavishing on a home sewing machine, plus flames, paisleys and curls and swirls with a McTavishing twist. Enhance your quilts with these wonderful machine quilting techniques! If you stitch on a midarm or long arm machine the techniques are the same, and your class knowledge will easily transfer to your machine. You will make the circle and a sampler in the class!



**SATURDAY WORKSHOP**

**QUILT AS DESIRED???**

**WHAT ON EARTH DOES THAT MEAN???**



Curves, straight lines, feather designs, cables, stencils, mark or no mark??? We will discuss in depth several drawing methods and thought processes to determine what would best enhance rather than hinder your beautiful quilt tops. This class will include an extensive trunk show, highlighting what to quilt in different situations. This class will apply any type of machine- home sewing or long arm. We will also have a demo and cover how to machine quilt a perfectly straight line with a home sewing machine without marking on your gorgeous quilt top. Please bring quilt tops if you are unsure what on earth to quilt on these. We will also discuss marking and the use of registration lines rather than marking the entire top, an in depth discussion of threads, and thread weights and how this affects the quilt appearance as well as thread tension as it relates to different thread weights.

Website: <http://www.annpigneri.com/>



## Weaving on your Sewing Machine Supply List

© Susan Conn Italo/Wild Onion Studio

Are you ready to add some woven texture to your quilts or wearable art? You don't need a big loom-- we are going to use our sewing machines to do the work! While this is primarily a technique class, we will create various sized samples that will be useable to create projects. Use the samples we make to add pizzazz to your art quilts, wearables, postcards, and more.

### Here's what you need:

- 18" x 22" piece of fabric to act as the base of a tote.
- double sided fusible (bonus points if you pre-fuse the above fabric before class!)
- Alene's Tacky glue. It's a great, washable glue. My tip: I also buy some Elmer's Glue, and dump it out, then replace it with the Alene's glue-- the flatter bottle shape of the Elmer's is easier on my hands if I'm going to be doing a lot of squeezing!
- Avery brand Removable Glue Stick. No other brand or type! You might have to order this from a stationery store, and you are more than welcome to share with others. I will bring a few to share/sell. I'm sorry to be so restrictive, but this is the only glue stick that won't ruin your work, or worse-- your machine!
- a piece of corrugated cardboard or foamcore. How big is a piece? A FQ size would be terrific. Can you use flat cardboard? Nope!
- 1 yard water soluble stabilizer (NOT ultra Solvy-- it's too thick!) 12" or 19" wide, need 3-4 yards of the 12", or 2-3 yards of the 19"
- 1 yard craft or wool felt in a color you like. 36" Wide. We will be using this as the base for some weaving, and you might see some felt peeking through the weaving.
- Fabric! We will be experimenting with many different techniques, resulting in several samples. You don't "need" to buy any special fabric, but if you want me to give you permission to shop... go shopping!! Please bring at least one fat quarter in a solid-reading fabric (a mottled batik or hand-dye works great! True solid cottons are always a good choice, too) Bring some of your leftover strips, leftover binding, and fat quarters. Got batiks and/or hand-dyed fabric? You don't need a lot, so bring what you have! Is there any unusual fabric in your stash, like velvets, chiffons, sparkly stuff? Bring it! You won't need more than 1/8 yard of any one fabric and sharing will be encouraged!

### Basic sewing supplies:

- ~ A reliable sewing machine which can be set up for free-motion stitching. You are responsible for having a good working relationship with your machine!
- ~ A portable sewing machine extension table-- you know, those plexiglass mini tables that fit around your machine to extend the sewing bed? If you don't have one, and you can't find one to borrow you will still have fun and be as productive as everyone else. It's just a tad easier with one, so I put it on the supply list!
- ~ Sewing machine feet: quilter's 1/4 foot, zig-zag foot, free-motion/darning foot, walking foot
- ~ Iron-- to fuse the fabric to the interfacing, etc.
- ~ Fabric scissors, large and small (I like the squeeze type), and small thread snip scissors
- ~ Threads: to color coordinate with your fabrics
- ~ Bobbins, needles, pins
- ~ Machine quilting gloves or finger cots. I highly recommend Machingers.
- ~ Rotary cutter, mat, and rulers.
- ~ Chocolate. It's very useful. Also, you can bribe the teacher with it.

To contact Susan, email: [Susan@wildonionstudio.com](mailto:Susan@wildonionstudio.com) or visit <http://www.wildonionstudio.com>

## Trapped Fibers Class Supply List—Saturday

Create your own art fabric using fabric, fiber, and film. Borrowing supplies from other fiber media, we will experiment with new techniques and materials to discover exciting ways to use our sewing machines to personalize the very basis of our quilts-- our fabric! Luscious silks, shimmering chiffons, even ragtag strips and threads become one of a kind fabrics under the sewing needle. Use the samples we make to add pizzazz to your art quilts, wearables, postcards, and more. While this is primarily a technique class, we will create various sized samples that will be useable to create projects, including a fat quarter sized piece of Trapped Fiber, which we can use to create various treasures!

### Here's what you need:

\*18" x 22" piece of heavy fusible interfacing, such as Timtex, Peltex, Sculpt Heavy. It's useful to have the interfacing fusible on both sides. If you can only fuse on one side, please bring some Aleene's Tacky glue to glue fabric to the other side of the interfacing.

\*2 (or more!) yards water soluble stabilizer (NOT ultra Solvy-- it's too thick!) 1 1/2 yard fabric to fuse on each side of the interfacing. Note: Use pretty fabric for one side; the other side will get covered up, so you can use an ugly fabric or even some orphan blocks, as long as it has color you like!

\*Aleene's Tacky glue. It's a great, washable glue. My tip: I also buy some Elmer's Glue, and dump it out, then replace it with the Aleene's glue-- the flatter bottle shape of the Elmer's is easier on my hands if I'm going to be doing a lot of squeezing!

\*Avery brand Removable Glue Stick. No other brand or type! You might have to order this from a stationery store, and you are more than welcome to share with others. I will bring a few to share/sell. I'm sorry to be so restrictive, but this is the only glue stick that won't ruin your work, or worse-- your machine!

### For the Trapped Fiber:

~Strips and bits of batik and hand-dyed fabric (it's easiest to use fabric that is printed on both sides)

~Fancy yarns, metallic threads, etc.

~Silk flowers

~Bits of mixed media (that can be sewn through!) like papers, felts, and leftover bits from other projects

~Fancy bits of fabrics-- velvets, metallic mesh, chiffons

~Spinning fibers-- throwsters silk waste, roving, Angelina, etc. (don't buy this-- bring it if you have it or can beg some from a spinning friend!) Interesting yarns at least 2 yards long. We will be creating a scarf, but please save yourself some frustration and DON'T pre-cut lengths. It tangles no matter how careful you are... take my word for it! Get together with friends and share yarns! Buy some on sale at your local yarn store, or even at the thrift shop!

~ 1/2 yard of black tulle (not harsh netting, but the softer tulle) Black works 90% of the time, and the other 10% of the time, it's still a fine choice. If you plan on working with only very light hued fabrics, bring 1/2 yard of offwhite or tan, too. It's cheap, and you might like the lighter color better!

### Basic sewing supplies:

~A reliable sewing machine which can be set up for free-motion stitching. You are responsible for having a good working relationship with your machine!

~A portable sewing machine extension table-- you know, those plexiglass mini tables that fit around your machine to extend the sewing bed? If you don't have one, and you can't find one to borrow you will still have fun and be as productive as everyone else. It's just a tad easier with one, so I put it on the supply list!

~Sewing machine feet: quilter's 1/4 foot, zig-zag foot, free-motion/darning foot, walking foot

~Iron-- to fuse the fabric to the interfacing.

~Fabric scissors, large and small (I like the squeeze type), and small thread snip scissors

~Threads: to sew trapped fiber (color coordinate with your fabric) as well as satin-stitching seams which show!

~Bobbins, needles, pins

~Machine quilting gloves or finger cots. I highly recommend Machingers.

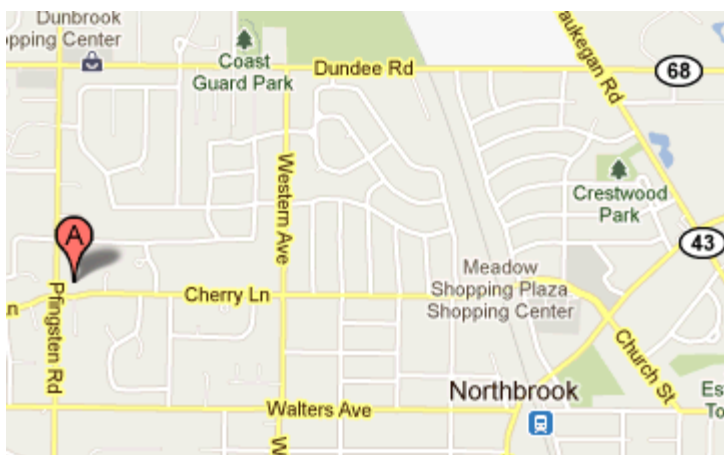
~Rotary cutter, mat, and rulers.

~Chocolate. It's very useful. Also, you can bribe the teacher with it.

# Meeting & Workshop Locations

This month our regular meeting AND our workshops will be held at Gloria Dei Lutheran Church in Northbrook- doors open at 6:45.

**Gloria Dei Lutheran Church**  
**1133 Pfingsten Road**  
**Northbrook, IL 60062**



Meetings start at 7:30.

**Board meetings** are held on the 3rd Monday at 7:15 pm at the Wilmette Public Library,  
 1242 Wilmette Ave, Wilmette

## CONTACT INFO:

You can **send mail** to our post office box at: Illinois Quilters Inc. , PO Box 39, Wilmette, IL 60091

## Membership in IQI

What are the benefits of membership?

- admittance to guild meetings (back at Beth Hille!) to hear professional fiber artists
- reduced fees and first access to workshops
- use of the guild library
- fellowship and opportunities to share your skills and accomplishments with other quilters (bring & brag) - also with the greater community - Fine Art of Fiber
- charitable service projects sewn on your own or with others
- a reduced fee and first chance to reserve for the annual Quilt-In weekend retreat in January and, last but not least
- a vote in matters set before the guild

Membership dues are \$50/year

Membership Application can be found at: [www.illinoisquilters.com](http://www.illinoisquilters.com)

## IQI Workshop Registration Form for 2012/2013

Name: \_\_\_\_\_

Phone: \_\_\_\_\_ E-mail address: \_\_\_\_\_

Non-members only: \_\_\_\_\_

Address	City	St.	Zip
---------	------	-----	-----

For each workshop, please circle the Member or Non-Member Price. Total amount remitted with each form should be the total of all circled amounts.

Date	Workshop Title	Member	Non-Member
10/05/12	Weaving on your Sewing Machine	\$45.00	\$55.00
10/06/12	Trapped Fiber™ Techniques	\$45.00	\$55.00
1/4/13	APPRAISALS-SEPARATE SIGN UP LIST		
01/04/13	Wool Applique-Fruitopia MORNING ONLY PLUS \$40 kit fee (very comprehensive!)	\$25.00	\$30.00
01/05/13	Quilts with Great Edges PLUS \$45 kit fee (very comprehensive!)	\$45.00	\$55.00
02/08/13	Embellishing Quilts Kit fee (if any) TBA	\$45.00	\$55.00
02/09/13	Easy Funky Piecing Kit fee (if any) TBA	\$45.00	\$55.00
03/08/13	How to Start with an Art Quilt	\$45.00	\$55.00
03/09/13	Surface Design for Art Quilts	\$45.00	\$55.00
4/5/13	McTavishing	\$45.00	\$55.00
4/6/13	Quilt as Desired	\$45.00	\$55.00
5/3/13	UFO Session 1 Friday 9-5	\$20.00	\$25.00
5/3/13	UFO Session 2 Friday 6-10	\$10.00	\$15.00
5/4/13	UFO Session 3 Saturday 9:30-5:30	\$20.00	\$25.00
5/3-5/4	UFO All 3 Sessions (\$5 Discount)	\$45.00	\$60.00
	<b>TOTAL AMOUNT DUE:</b>		

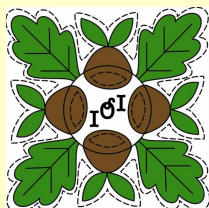
Supply lists available on the IQI website: [www.illinoisquiltersinc.org](http://www.illinoisquiltersinc.org)

Bring a completed form with check or cash to a monthly meeting or send completed form with a check payable to IOI to:

**Georgia Cibul**  
11 Winfield Drive  
Northfield, IL 60093  
847-441-5678

Refunds are available up to 30 days in advance minus a \$5 per-workshop-day handling fee. Requests for refunds must be in writing and sent to workshop registration coordinator.





# 2012-2013



## Board and Committee Contacts

President	Esther Behnke	<a href="mailto:president@illinoisquilters.com">president@illinoisquilters.com</a>
VP Programs	Roberta Levin	
VP Contracts	Angel Sidor	
Treasurer	Randy Menakes	
Secretary	Donna Derstadt	
Membership	Katie Ordovery Patti Carrington	<a href="mailto:membership@illinoisquilters.com">membership@illinoisquilters.com</a>
Oak Leaf Editor	Ellen Pomes	<a href="mailto:info@illinoisquilters.com">info@illinoisquilters.com</a>
Fine Art of Fiber	Tina Smith Judy Curtis Ardis Mistak	
Workshop hosts	Diana Burrows	
Workshop registration	Georgia Cibul	<a href="mailto:workshops@illinoisquilters.com">workshops@illinoisquilters.com</a>
Member at Large	Jennie Gordon	
Committee Chairs		
Library	Barbara Feinberg, Linda Feinberg Judith Maffris	<a href="mailto:library@illinoisquilters.com">library@illinoisquilters.com</a>
Service/ Friendship	Lynn Bradburn Diana Burrows	
Quilt-In	Chris Deering Cynthia Churchwell	
2013 Raffle Quilt	Donna Derstadt Sue DeVarco Linda Yatzor	
2014 Raffle Quilt	Position Open	
Publicity	Mary Meyers	
Website	Ellen Pomes	<a href="mailto:info@illinoisquilters.com">info@illinoisquilters.com</a>
Challenge	Quilt Linda Howard Anne Hart Diane Capitani (assistant)	