

IQI

PO BOX 39

WILMETTE, IL 60091

WEBSITES:

[WWW.ILLINOISQUILTERS.ORG](http://WWW.ILLINOISQUILTERS.ORG)

[WWW.ILLINOISQUILTERSINC.ORG](http://WWW.ILLINOISQUILTERSINC.ORG)

[WWW.ILLINOISQUILTERS.COM](http://WWW.ILLINOISQUILTERS.COM)

# The Oak Leaf



VOLUME 32, ISSUE 8

MAY, 2013

## COMING UP!

- May 2, 2013 — **Meeting** — Linda Marcou & Jan Krueger—Beth Hillel, Wilmette, IL 2013 Board Members to be Announced
- May 3-4, 2013—**Workshop** Scrapbusters Weekend!!!
- May 18—**Service and Raffle Quilt Workshop**—Gloria Dei
- June 6, 2013—Year **End Pot-luck**—Come see our programs for next year!!!
- June 15, 2013—**Fellowship and Service**—come be a plucker for the 2014 Raffle Quilt - Gloria Dei

## President's Message

Well our year is slowly winding down. We have the May 2<sup>nd</sup> program by Jan Krueger and Linda Marcou trunk show of scrapbusters followed by our Bust that Stash Quilt event. In June we'll have our summer pot luck party and then comes the changing of the board. Our new year will start in July with programs for the coming year being finalized. We have some really exciting programs scheduled so far and remember, if you pay your dues before June 30<sup>th</sup> you will get a \$5 discount.

With the wet and cool spring we are having so far, we can surely make lots of quilts as we are stuck indoors. Be sure to attend the May meeting and get loads of ideas to reduce and/or clean up your scrap baskets. Don't forget to also bring with you all the items you want to donate to our 2<sup>nd</sup> Annual Garage Sale which will be in June during our pot luck dinner.

Keep on quilting,  
Esther Behnke, President

### Inside this issue:

<a href="#">Raffle Quilt 2013 News</a>	2
<a href="#">Membership/FAOF</a>	3
<a href="#">Fellowship and Service</a>	4
<a href="#">Library</a>	5
<a href="#">May StashBuster Weekend</a>	6
<a href="#">Pgm Calendar /Financials</a>	7
<a href="#">2013-14 Speaker Schedule</a>	8-9
<a href="#">Location/Membership</a>	10
<a href="#">Board/Committee Contacts</a>	11
<a href="#">Membership Application</a>	12-13



## Madison Quilt Show Bus Trip

September 7, 2013 IQI is making a bus Trip to Quilt Expo Madison leaving from Northbrook Court at 7:30am, returning that evening after the show ends. Price will include admission ticket for show. If you are interested in this trip, please sign up as soon as details are finalized. We will have to cancel this trip in July if there is not sufficient interest.



## 2013 Raffle Quilt News, News & more News!!

Come to the May 2nd, 2013 meeting to hear a special announcement!

The Sewing/Quilt Expo was very successful, earning IQI \$425 in ticket sales and we provided 4 Ambassadors to the show. Thank you to those who volunteered in our booth. To date, Delectable Mountain Garden has raised \$1755 toward our goal of \$5000, \$628 from member sales and \$1127 from local guilds, quilt shops and the Expo!

### May Travel Schedule

May 2nd	Sinnissippi Quilters Guild in Rockford
May 9th	Salt Creek Guild in Hinsdale
May 14th	Gazebo Quilters in Huntley
May 16th	Pride of the Prairie Guild in Plainfield
May 25th	Needles and Thread Guild in Chicago

**\*Note\*** We are in need of 1 more volunteer to partner with a new member to visit the Pride of the Prairie Guild. The featured speaker to Karen Sievert, author of "Prairie Point Pizazz"

### International Quilt Festival June 21 , 2013

By a lottery, IQI earned the prestigious honor to showcase our raffle quilt and sell tickets at the IQF/Rosemont Show. In exchange, we have been asked to provide 10 volunteers to white glove for 2 hour shifts. The shifts are divided across each day of the show. The specific shifts unfilled are listed below. If you can volunteer, you earn a free pass to the show on the day you volunteer. The list of volunteers must be submitted to IQF by June 5th, 2013.

Thursday	June 20th	7:00 pm to 9:00 pm
Friday	June 21st	2:00 pm to 4:00 pm
Saturday	June 22nd	4:00 pm to 6:00 pm
Sunday	June 23rd	1:00 pm to 3:30 pm

Please email : Sue DiVarco at: [suziequilts@yahoo.com](mailto:suziequilts@yahoo.com) or call 773-271-7187  
Don't forget to turn in your raffle tickets at the May and June meetings to earn your coupon for our special raffle. This drawing will be at the December meeting.

**The 2013 Raffle Quilt Committee**  
**Donna Derstadt, Sue DiVarco and Linda Yatzor**



## Renew your membership today!

We are now accepting renewals for 2013/2014 IQI Membership! You can also now join or renew using PayPal. A link is set up on our website under the "Membership" tab.

You can still renew or join by completing the form and mailing it or dropping it off at the membership table at the meeting. The renewal rate is \$45.00 if you join by June 30th. After that, the rate is \$50.00.

*Think about adding a little extra for the library fund.*

Special thanks to Ellen Pomes for researching and setting up the PayPal account. Contact Katie Ordoover or Patti Carrington with questions.

Katie Ordoover 847-866-6638 [katiejoyjackson@yahoo.com](mailto:katiejoyjackson@yahoo.com)

Patti Carrington 847-866-6422 [ramaca@sbcglobal.net](mailto:ramaca@sbcglobal.net)

## Fine Art of Fiber



Are you thinking about participating in the Boutique at The Fine Art of Fiber November 7-10, 2013?

The boutique is where members of IQI and NSNG can sell items that they make. It can be a lot of fun and profitable too! In order to sell your items, you need to first apply (the application will be available at <http://www.fineartoffiber.org> in the next few weeks) for a spot. You can look at boutique pictures from previous years on this website as well. Please read all the guidelines before sending in your entry. There are only 60 spots available, so please apply as soon as possible. You must make all the items yourself- no imported items or items made by others may be entered. 75% of the price you set will go directly to you, 10% to the Garden and 15% to your guild. There are a few other requirements- working two shifts of 2.5 hours each during the course of the show, and providing a W-9 form with your tax info. This will be my 4th year selling in the boutique, and what can I say, I love it!

If you have any questions, please call me or email me - 847-475-3556 or [rlevin2000@aol.com](mailto:rlevin2000@aol.com)

Roberta Levin—IQI Boutique Chair/FAOF Boutique Co-chair



## Friendship/Service

### Saturday, May 18th

The Service/Friendship Committee is collecting Hobbs Batting UPCs so that we can purchase some batting for service quilts at a reduced cost. If you have any, please drop them off at our table at the monthly guild meetings. Thanks soooo much!!!

Any questions? Just contact either of us.

Lynn & Diana



## Second Chance to see Mary Lou Weidman!

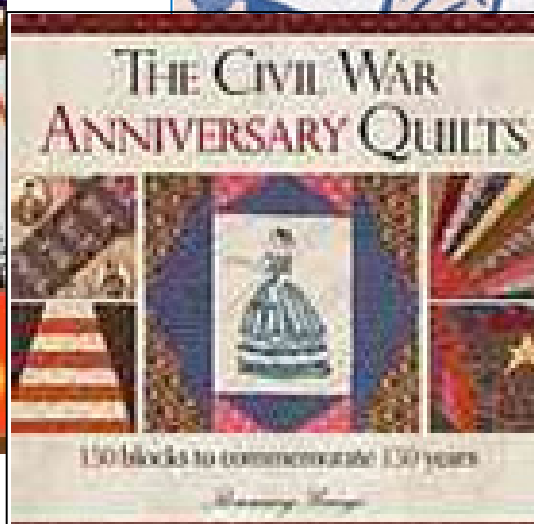
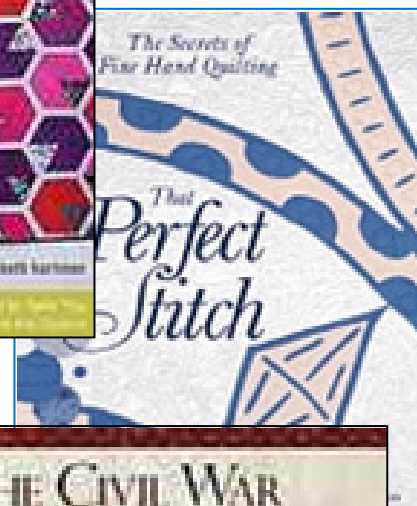
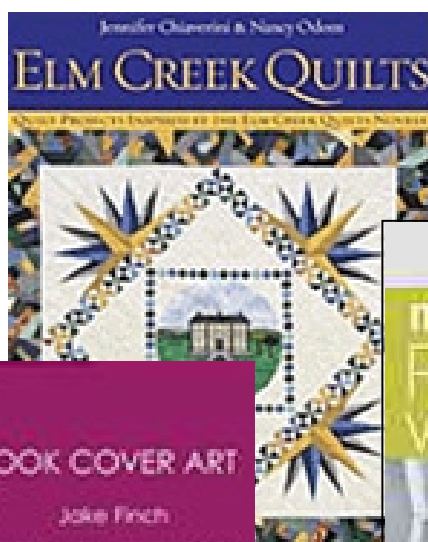
If you missed Mary Lou Weidman when she was here at IQI last month, Village Quilters of Lake Bluff / Lake Forest ([www.villagequilters.org](http://www.villagequilters.org)) welcomes IQI members to participate in two workshops with Mary Lou Weidman. The first workshop is Monday, May 20 with Mary Lou's Piecing "Stuff" the Fun Way and the second workshop is Tuesday, May 21 with Mary Lou's Flower Power. Each workshop is \$50 and we hold our workshops at the west branch of the Lake Forest Bank & Trust in Lake Forest IL (easy access from 294/94 via Route 60). If you have questions, please email Ellen Granda [ecgranda@comcast.net](mailto:ecgranda@comcast.net). Here is the hyperlink for Mary Lou's website, which describes the workshops: <http://www.marylouquilt designs.com/workshops.aspx>

# IQI Library

The May 2<sup>nd</sup> meeting will be the last "Library" meeting of our fiscal year. For those members who have renewed their membership for the 2013/14 year you get to check out as many books as you'd like for the summer. They will not be due until the September 12, 2013 meeting at Beth Hillel.

Below are a selection of new books and those added to our collection from the many members who donated their books to the IQI Library. Thanks to all of you for helping make our collection stronger. The books that were duplicates or not selected will be for sale at the June meeting. Have a great summer reading and learning new techniques.

Your Librarians  
Linda Feinberg  
Barbara Feinberg  
Judy Maffris







**May 2013**

## **IQI's Huge Big Enormous Scrapbuster, Stashbuster & UFO Weekend**

**Thursday**

Wisconsin quilters Linda Marcou & Jan Krueger will kick off our SSU weekend with a two-trunk Scrapbusters show and lecture. Turn your stash into an explosion of scrap quilts and make everyone happy! From traditional to contemporary they will share stories, fabric secrets, pattern ideas and more. A 15 page handout with scrapbusting patterns and techniques will be given to each person in attendance.

### **IQI'S OWN FIRST STASHBUSTER WEEKEND EVENT!**

Up to 20 hours of sewing, sewing, sewing!

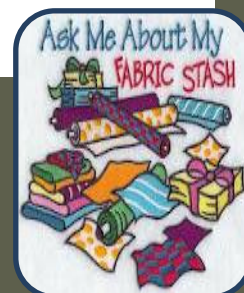
Friday 9-5, Friday night 6-10 & Saturday  
9:30-5:30



Just those scraps, bust your stash and turn your UFO's into finished projects. Sign up for one session or all three. (no workshop teachers)



- Continental breakfast & snacks!
- Coffee, tea and cold beverages!
- Prizes!
- Certificates!
- Awards!
- Maybe even Games!
- Optional catered lunch!





# IQI 2012-2013 Program year



<b>May</b>	
<b>Meeting</b> : Jan Krueger and Linda Marcou Trunk Show: Scrapbusters	May 2, 2013
<b>Retreat</b> : Bust that Stash Quilt Event	May 3-4, 2013
Fellowship and Service Gathering—Gloria Dei, Northbrook	May 18, 2013
<b>June</b>	
<b>Annual Meeting and Potluck</b> At Gloria Dei	June 6, 2013
<b>Summer</b>	
Fellowship and Service Gathering—Gloria Dei, Northbrook	June 15, 2013
Fellowship and Service Gathering—Gloria Dei, Northbrook	July 20, 2013
Fellowship and Service Gathering—Gloria Dei, Northbrook	August 17, 2013

## Illinois Quilters, Inc.

### Financial Report

March 31, 2013

#### Checking Account:

Opening Balance	, 3/01/13	\$ 11,602.28
Income		3,798.54
Electronic Withdrawal*		10.00
Cleared Expenses	<u>1,772.21</u>	
Closing Balance, 3/31/13		\$ 13,618.61
Uncleared checks		\$ 2,524.95
Less Anticipated Expenses	<u>2,901.79</u>	
Available Cash		\$ 8,191.87
Savings Account:		<u>\$ 9,916.53</u>
Cash on Hand, 3/31/13		\$ 23,535.14

#### March checks written:

\$1,950.00	Speaker/Workshop fees
\$250.00	Room rental, March 2013
\$206.70	Travel expenses
*Paymentech Fee	



Submitted, Randy Menakes, Treasurer

# Tentative speaker schedule for 2013-14

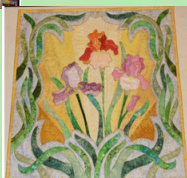
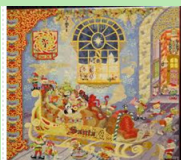
## September



Bus trip to Madison Sept 7

September 12 2013 Jan Aaron will lecture "The what's what of Modern quilts" This lecture provides an overview of the modern quilt movement. Everything from the who's who in the movement, to pattern and fabric resources, to what is a modern quilt, will be addressed. Key elements include discussion on negative space, neutrals and simplicity of design. We have invited Blue Underground for a fun shopping experience. So come early.

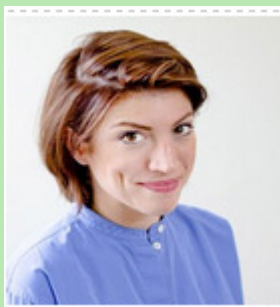
## October



October 3 2013 Mary Buvia lecture is "Idea to Reality" - full trunk show and discussion, question/answer period on how the quilts are realized. The audience is asked to join in on the conversation so that all their questions may be answered. It's fun! Mary's original quilts have won over 50 awards in major competitions and have appeared in many publications and calendars including front and back covers of magazines, along with engagement and twelve-month calendars. Her work has been included in the book "500 Art Quilts," published by Lark Books in 2010

October 3-4 2013 Two day work shop Machine or Hand Invisible Appliqué. This class is a hands-on exercise in the preparation, cutting, and stitching of an original pattern designed to learn all elements of this award-winning method, freezer paper turned edges technique. Participants learn how appliqué pieces may be machine appliquéd, hand appliquéd, or decorative-edge appliquéd, as well as an unique trapunto techniques. Hand-outs and original full size patterns are provided.

## January



January 2, 2014 Mary K Fons

"War & Piecing: Confessions of a Quilt Mafia Daughter". In this funny and thought-provoking address, Mary Fons shares her path to quilting, inside stories from the heart of the quilt industry, and shares plenty of gorgeous quilts along the way. Mary Fons is the creator of Quilty, a weekly online program launched in 2010 with New Track Media and now serves as editor of Quilty magazine, available bi-monthly on newsstands nationwide. She serves as co-host of "Love of Quilting" on PBS/Create with her mother, quilter and educator Marianne Fons. Mary's quilts are frequently featured in Love of Quilting Magazine, Quilty, and others. She lectures widely and teaches beginner quilter workshops across the country, writes the monthly newsletter (The Cut Sew Press), and hosts the online special, "Quilt With the Stars." Her first book, "Quilts To Make Love Under" will be published by Stash Books/C&T Publishing in 2014. Mary is a member of the Chicago Modern Quilt Guild and has a special place in her heart for rookie quilters because she basically learned how to quilt on national television.

## February



February 6 2014, Suzanne Marshall "The Evolution of a Quilt maker" Suzanne Marshall, international-award winning quilter, brings her latest art to the internet! As a self-taught quilter who has never taken a lesson, Suzanne has evolved several novel techniques, such as Take-Away Appliqué.

February 7, 2014 Hand Quilting With Out A Frame or Hoop work shop. The class will include preparing the quilt for hand quilting, discussion of battings, demonstrations, and hands-on experience with plenty of individual attention from the instructor. Wonderful results can be obtained, often with smaller stitches. There will be templates galore to select and copy and numerous battings to run the needle through to see which the favorite is.

February 8, 2014 Take-away Appliqué Rhapsody in Bloom work shop. I've enjoyed working with art nouveau designs because of the graceful, flowing lines and interpretation of forms derived from nature. Enjoy appliquéing a floral block, learning methods for smoothing curved lines and using take-away appliqué for the multi pieced flowers. The pattern (provided in class) makes a beautiful small wall hanging or is the perfect starting point for an art nouveau quilt. Every skill level. Full day class



# Tentative speaker schedule for 2013-14

## March



March 6, 2014 Lenore Crawford "Award winning Techniques for Fusing Fabrics". Lenore Crawford's fabric art combine her love of France, their architecture, and flower gardens along with her passion for color and realism. Their texture and warmth achieved from the fabric itself along with fabric painting give an impressionistic feeling that only this medium can produce. She has won several prizes for her art and continues to develop and grow her medium and style in new and beautiful ways.

March 7 2014 One Day Fusing/Painting .In this workshop the designing of a small fused project will begin. We will work from one of three of Lenore's patterns that are shown on the Patterns Yellow Poppies, Red Poppies or Yellow Cone Flower since these are the least complex patterns for beginners You will learn how to make your own patterns from your own photos, too! Lenore will also demonstrate how to add fabric painting to your design to add detail and depths. \$15 supplies fee required includes patterns by Lenore plus other supplies she provides.

March 8 2014 Shredded Fabric Art Quilt. In this workshop student will learn to create their own shredded fabric impressionistic art quilt using a technique originated by Noriko Endo. Fabrics are shredded in class and used to design a scene. Then the design is covered in tulle and top-stitched using free-motion sewing. Finishing techniques will also be covered such as binding the piece and hanging methods. Lenore will also show how she uses fabric paints to enhance these pieces even more where appropriate.

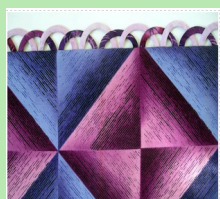
## April



April 3, 2014 Pamela Holland "The Journey of Discovery through Quilting". Quilter, quilt designer, pattern designer, fabric designer, photographer, illustrator, film maker, Judge, Author. After a career as a photographer, and fashion designer Pamela has been working in the quilting industry for over 20 years. She travels 10 months of the year to far flung places teaching the art of quilting .*April 4 2014 "When do we get to create the quilts from the Alphabet how many of you have created your own letter from the Alphabet. Well, this is the class for you. Create a letter and each of you will design your own quilt, with a little help from me. What is appliquéd? What is illustrated? This class takes you one step further.*

April 5 2014 Mexican Tiles. Learn how to create a Mexican Tile pattern with appliqué. A pattern is provided or you can create your own. Learn how to illustrate a Tile pattern. (you will complete two in one day).

## May



May 1, 2014 Philippa Naylor "The Evolution of a Quilt maker" Born in Yorkshire, England, Philippa discovered a love of sewing and knitting as a child. A second-hand sewing machine for her thirteenth birthday enabled her to progress from making dolls clothes to full sized garments for herself, family and friends. After training to be a clothing designer she worked in industry for five years designing lingerie for Courtaulds Clothing. After this she moved to Dhahran Saudi Arabia with her husband Peter, who at the time was working as an English language teacher. Philippa has had great success in quilt shows in both the UK and America, and won many prizes - most notably the AQS 'Bernina Workmanship Award' with "Pop Stars" in 2002 and AQS 'Best of Show' with "Lime Light" in 2003

May 2 2014 Curved Piecing *Full Day work shop- Suitable for confident intermediate and advanced level students who have good sewing machine skills. Learn Philippa's unique award winning curved piecing method in this exciting new class. A great opportunity to learn an entirely different way of creating a beautifully crafted contemporary quilt top*

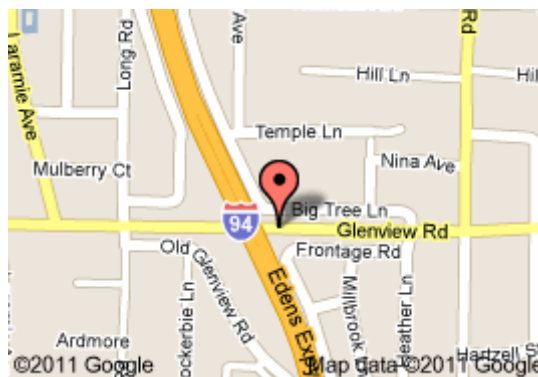
May 3, 2014 Happy Endings. Creative Ways to Finish Your Quilt, Be inspired by a variety of decorative edges and learn how to support unusual shaped quilts. Facings, bindings, plastic boning supports and rouleau and scallop edges all explored

# Meeting and Workshop Location Information

All general Thursday night meetings (with the exception of December & June Potlucks) will be held at our Beth Hillel in Wilmette - doors open at 6:45. Meetings start at 7:30.

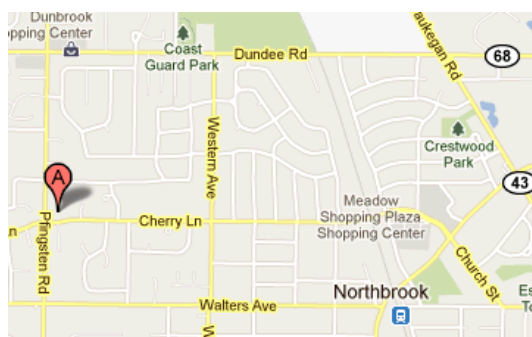
Please do **not** arrive before 6:30PM.

Beth Hillel Congregation Bnai Emunah  
3220 Big Tree Lane  
Wilmette, Illinois 60091

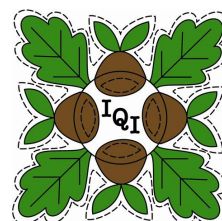


All regularly scheduled workshops, service days, and December & June Potlucks will be held at:

Gloria Dei Lutheran Church  
1133 Pfingsten Road  
Northbrook, IL 60062



## Membership in IQI

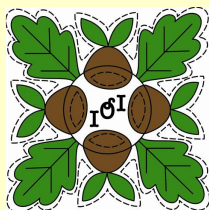


What are the benefits of membership?

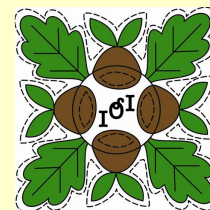
- admittance to guild meetings (back at Beth Hillel!) to hear professional fiber artists
- reduced fees and first access to workshops
- use of the guild library
- fellowship and opportunities to share your skills and accomplishments with other quilters (bring & brag) - also with the greater community - Fine Art of Fiber
- charitable service projects sewn on your own or with others
- a reduced fee and first chance to reserve for the annual Quilt-In weekend retreat in January and, last but not least
- a vote in matters set before the guild

Membership dues are \$50/year

Membership Application can be found at: [www.illinoisquilters.com](http://www.illinoisquilters.com)



2012-2013

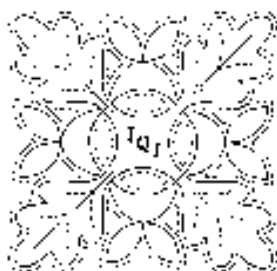


## Board and Committee Contacts

You can **send mail** to our post office box at:

Illinois Quilters Inc. , PO Box 39, Wilmette, IL 60091

President	Esther Behnke	<a href="mailto:president@illinoisquilters.com">president@illinoisquilters.com</a>
VP Programs	Roberta Levin	
VP Contracts	Angel Sidor	
Treasurer	Randy Menakes	
Secretary	Donna Derstadt	
Membership	Katie Ordoover Patti Carrington	<a href="mailto:membership@illinoisquilters.com">membership@illinoisquilters.com</a>
Oak Leaf Editor	Ellen Pomes	<a href="mailto:info@illinoisquilters.com">info@illinoisquilters.com</a>
Fine Art of Fiber	Edrene Heiss Melanie Anderson	
Workshop hosts	Diana Burrows	
Workshop registration	Georgia Cibul	<a href="mailto:workshops@illinoisquilters.com">workshops@illinoisquilters.com</a>
Member at Large	Jennie Gordon	
Committee Chairs		
Library	Barbara Feinberg, Linda Feinberg Judith Maffris	<a href="mailto:library@illinoisquilters.com">library@illinoisquilters.com</a>
Service/ Friendship	Lynn Bradburn Diana Burrows	
Quilt-In	Chris Deering Cynthia Churchwell	
2013 Raffle Quilt	Donna Derstadt Sue DeVarco Linda Yatzor	
2014 Raffle Quilt	Position Open	
Publicity	Mary Meyers	
Website	Ellen Pomes	<a href="mailto:info@illinoisquilters.com">info@illinoisquilters.com</a>
Challenge Quilt	Linda Howard Anne Hart Diane Capitani (assistant)	



Illinois Quilters, Inc.  
P.O. Box 39, Wilmette, IL 60091-0039

MEMBERSHIP APPLICATION  
2013-2014

Membership Directory Deadline: September 15, 2013

-- Directory listing is essential for Fine Art of Fiber participation --

please PRINT clearly:

today's date \_\_\_\_\_

name (as you want on name badge & in directory) \_\_\_\_\_

address \_\_\_\_\_

city \_\_\_\_\_ state \_\_\_\_\_ ZIP \_\_\_\_\_

preferred phone: (\_\_\_\_\_) \_\_\_\_\_ secondary phone: (\_\_\_\_\_) \_\_\_\_\_

e-mail address\* to receive Oak Leaf \_\_\_\_\_

(ok to use my email, but please don't print it in the directory: \_\_\_\_\_)

\*NOTE: for Oak Leaf via **regular mail** add \$10.00 below.

\*\*\*\*\*

please indicate whether you are: new\*\* to IQI \_\_\_\_\_ renewing \_\_\_\_\_ returning after absence \_\_\_\_\_

\*\* how did you learn of IQI (friend, online search, etc.)? \_\_\_\_\_

FEES: \_\_\_\_\_ \$45 (thru 6/30) or \$50.00 (from 7/1)  
\_\_\_\_\_ \$10.00 if Oak Leaf should be **printed & mailed**  
\_\_\_\_\_ (discretionary) Library Fund

Total \$ \_\_\_\_\_ paid by cash \_\_\_\_\_ / check # \_\_\_\_\_

\*\*\*\*\*

IQI is a volunteer organization and operates effectively only with everyone's help. Four hours of service per year is a suggested share. Please choose activity area/s where you might like to help:

- |  |  |
|--|--|
| _____ board ( I would be willing to serve)       | _____ potluck help, Dec. &/or June mtg.        |
| _____ demonstrate a technique – explain on pg. 2 | _____ challenge project for members            |
| _____ Fine Art of Fiber show/boutique            | _____ quilt-in (members' weekend retreat)      |
| _____ host a speaker in my home                  | _____ raffle quilt (help make)                 |
| _____ host at a workshop                         | _____ raffle quilt (help show at other guilds) |
| _____ help at library table at meetings          | _____ service projects - in a group or at home |
| _____ help at membership table at meetings       | _____  |
| _____ nominating committee for next board        | _____  |