

The Oak Leaf



VOLUME 30, ISSUE 9

JUNE, 2011

COMING UP!

- Thurs June 2, Monthly Meeting at [Gloria Dei](#). Doors open at 6:00 for signups, socializing. Potluck dinner starts at 7:00 pm. See Page 2 for complete information.
- Saturday, June 25, 11:30 a.m. Outgoing and Incoming board member transition meeting @ Cynthia Churchwell's home.
- September Oak Leaf Deadline—Date & email address for submissions TBA
- Monday August 15, 7:15 PM, Board Meeting at Wilmette Public Library.
- Thursday, September 1, 2011—9am-4pm First General guild meeting of the 2011-2012 year @ Beth Hillel. Doors open at 6:45 for signups, library and socializing. Meeting starts @ 7:30 pm. Speaker will be Carol Wilhoit, Get Your Stash Together.
- September 15, 2011, Deadline for entries and Boutique signup for Fine Art of Fiber. See the forms and information on the Fine Art of Fiber (you can get there by clicking on the link on IQI's website, www.illinoisquiltersinc.org)

President's Message

I am pleased to announce the result of our vote about our meeting site. IQI will return to Beth Hillel in the fall. You can find the address and a map on page 13. We look forward to seeing you there.

I hope you are all planning to attend our potluck dinner this month. The food is always great and the company can't

be beat. Members who have renewed for next year will be allowed to sign up for workshops. Remember that workshop hostesses receive a certificate for a free workshop. We have a great line up of classes for next year, so you might want to keep this in mind.

The challenge quilts will be

revealed and we'll have an exchange of 5-inch squares as well. Check the notice on page two to see what you should bring.

Happy quilting,
Jennie Gordon

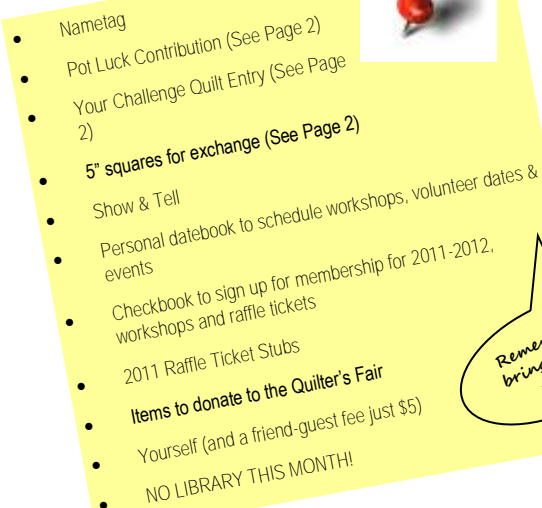
Breaking News...

Starting with our first Guild meeting of our guild year 2011-2012, we will be back at our former location of Beth Hillel in Wilmette. Their renovation is complete, and we are looking forward to speakers up on a stage and access to our full library every month. We will continue to meet at Gloria Dei for all workshops, service days and our December and June potlucks. Location information and maps can be found on page 13.

Important Workshop

Signup Info

In order for our workshops to go ahead, we need a minimum number of participants signed up 60 days before the workshop. The sooner you sign up, the better. Please don't wait until the September meeting to sign up for the October workshop!

- 
- Nametag
 - Pot Luck Contribution (See Page 2)
 - Your Challenge Quilt Entry (See Page 2)
 - 5" squares for exchange (See Page 2)
 - Show & Tell
 - Personal datebook to schedule workshops, volunteer dates & events
 - Checkbook to sign up for membership for 2011-2012, workshops and raffle tickets
 - 2011 Raffle Ticket Stubs
 - Items to donate to the Quilter's Fair
 - Yourself (and a friend-guest fee just \$5)
 - NO LIBRARY THIS MONTH!

Remember to bring all this to IQI!

June Potluck & Meeting Information

**Don't forget your challenge project—
quilts & objects will be combined and
three prizes will be awarded!**

Potluck

Celebrate the end of our year with our annual pot luck dinner. It will be held

on Thursday, June 2nd, 2011 at Gloria Dei Church.

The doors open at 6:00 pm, and dinner will start at 7:00pm.

Again we will feature our traditional menu, but with alternate assignments:

A through E bring desserts

F through K bring hot dish or main dish salads

L through R bring appetizers

S through Z bring side dish salads

As early June weather is unpredictable, it could be chilly or hot, so main dish salads might be a welcome change from hot dishes.

Board members will supply beverages, and IQI will supply paper goods and utensils.

We will need a few volunteers to help set up with these tasks:

- Spread the tablecloths, get the flatware, napkins, and plates ready
- Make sure the tables for the food and drinks are lined up
- Direct people where to put the dishes they bring
- Direct those who need to heat something to the oven to use.

We also need to heat water in the urn for those who want coffee or tea.

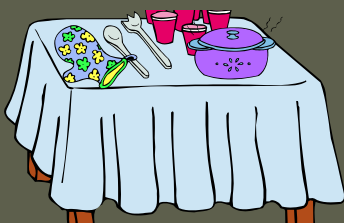
The tables should be set up for us by the church.

Afterward we need to remove the tablecloths and make sure all food and food dishes have been claimed, so that we don't leave any kind of mess and put away any supplies that are left over.

As you can see, there is not a lot to do, so I think four volunteers for before and four for after will be enough.

Please let me know if you will be willing to help. Please come 30 minutes before the start of the pot luck, that will be plenty of time.

Thank you, Ellie Rest



Five Inch Square Exchange

We have had fabric exchanges like this before, and it had added to the enjoyment of the June Pot Luck.

1. Bring five by five-inch fabric squares to the June pot luck, as many as you want. (Washed, pressed and selvages removed before you cut your squares.)
2. Put them in a sealable sandwich bag, for example, the Glad zipper bag. (ed. Note— note product placement!)
3. Include a card or note in the bag with your name and the number of squares you brought.
4. You will go home with a number of squares equal to the number you brought.

Ellie Rest

IQI 2011-12 Proposed Slate, to be voted on at June 2, 2011 meeting.

Board of Directors

President: Jennie Gordon

VP Programs: Diana Burrows

VP Contracts: Roberta Levin

Treasurer: Esther Behnke

Secretary: Donna Derstadt

Oak Leaf: Ellen Pomes

FAOF: Ardis Mistak, Judy Curtis, Jan Aaron

Membership: Cynthia Churchwell & Georgia Cibul

Workshop Chair: This board position is shared as follows:

Workshop Hosts: Mary Meyers, Workshop Registrations: Chris Deering

Member at Large: Diane Capitani

Committee Chairs

Challenge Coordinator: Georgia Cibul

Historian: Diane Capitani

Library: Barbara Feinberg, Linda Feinberg, Judith Maffris

Publicity: Angel Sidor

Quilt-In: Debbie Pines, Fay Stickler, Amy Spungen, Laurie Golden

Raffle Quilt 2011: Jim Pilarski

Raffle Quilt 2012: Georgia Cibul, Stephanie Strand

Raffle Quilt 2013: Position Open

Service/Friendship: Lynn Bradburn/Diana Burrows

Website: Ellen Pomes

A Note from Membership

Golly, where did the year go? Did it speed past anyone else in a blur? Please remember to collect your supplement pages for the closing year's directory at the June 2 potluck meeting. Let Cynthia know if you would like it emailed to print at home; we don't publish our member information on our website.

July 1 begins a new guild year, and you may renew your membership at any time (we have 29 renewals already from the May meeting!) Please remember the September 15 deadline to be eligible to exhibit work in the Fine Art of Fiber show next November. Get your member form at the potluck meeting or from the IQI website. You may turn it in with your payment June 2 at Gloria Dei, mail it (with check only, no cash please) over the summer, or bring it to the September 1 meeting at Beth Hillel. Dues are still \$50.00, and that includes an **electronic** subscription to the *Oak Leaf* newsletter. **If you need to receive the *Oak Leaf* by U.S. mail, add \$10 to your member dues.** Alternatively, you can read the *Oak Leaf* on the IQI website from a public computer, like at your community library. As always, you are welcome to add a donation to support and expand our guild library.

So... what are the benefits of membership? –admittance to guild meetings (back at Beth Hillel starting next fall!) to hear professional fiber artists – reduced fees and first access to their workshops - use of the guild library - fellowship and opportunities to share your skills and accomplishments with other quilters (bring & brag) – also with the greater community (Fine Art of Fiber; charitable service projects sewn on your own or with others) – a reduced fee and first chance to reserve for the annual Quilt-In weekend retreat in January and, last but not least – a vote in matters set before the guild.

... and what are the responsibilities? - attendance as you are able - voting at the annual June meeting and at others, as announced - a friendly and welcoming attitude, and - some service to the guild, a recommended 4 hours per member per year. Many of you have generously complied with the latter for years, often 'behind the scenes'. We would like to recognize your contribution and diligence, so we will try to track our volunteer efforts next year. Watch for more info on that later. The member form suggests many ways to fulfill your service, such as serving on the board or any committee, working at Fine Art of Fiber, making or helping with service quilts, or other activities that facilitate functioning of IQI. If you do not check your preferences we will be glad to call you to help you choose. Perhaps you have new ideas -??

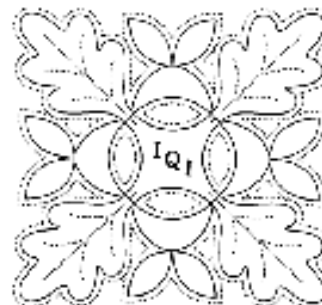
Cynthia Churchwell [cmchurchwell@comcast.net.] & Georgia Cibul, membership co-chairs

Illinois Quilters, Inc

P.O. Box 39
Wilmette, IL 60091
www.illinoisquiltersinc.org

MEMBERSHIP APPLICATION

2011-2012



Deadline for directory: September 15, 2011

Membership by Sep. 15 is essential to submit works for Fine Art of Fiber

date _____

name : _____

address: _____

city: _____ state: _____ zip: _____

primary phone: (____) _____ other phone?: (____) _____

email address: _____

for newsletter and guild information; will be in directory unless checked: ☐ don't publish email

Please indicate: are you new to IQI _____? renewing _____? returning after an absence
_____?

How did you learn of IQI? (friend, online search, etc.) _____

Guild service: Our bylaws encourage each member to provide a minimum of 4 hours of service to IQI's activities each year, such as serving on the Board or a committee, helping an officer with her/his duties, working at Fine Art of Fiber, helping to make quilts for charitable service. We would like to track and celebrate member participation this year and encourage you to keep an estimate of your time and efforts to support IQI. Please indicate your preferred area/s or expect a call from the membership committee to discuss opportunities:

- | | |
|--|---|
| <input type="checkbox"/> charity quilts & projects | <input type="checkbox"/> Fine Art of Fiber committee |
| <input type="checkbox"/> library table at meeting | <input type="checkbox"/> nominating committee |
| <input type="checkbox"/> house a speaker in my home | <input type="checkbox"/> membership table at meeting |
| <input type="checkbox"/> host a workshop (assist teacher) | <input type="checkbox"/> committee for member quilt challenge |
| <input type="checkbox"/> host or arrange friendship meeting | <input type="checkbox"/> Quilt-in committee (member retreat) |
| <input type="checkbox"/> help with potluck meeting in Dec. or June | <input type="checkbox"/> serve on the board |
| <input type="checkbox"/> raffle quilt committee | <input type="checkbox"/> demonstrate a technique (or two!): |

over →

Optional -- to list professional quilting services in the directory

Shop Owners: please complete this information or provide a camera-ready b&w ad

business name _____

address _____ city _____ state _____ zip _____

phone (____) _____ hours _____

text (goods & services provided) _____

Full members: describe the quilting services or related activity you provide. Submit with this completed form a copy of credentials or documentation that support any claims made (ex.: 'certified appraiser'), as unsubstantiated claims will not be published.

Dues & Fees	Membership dues through June 2012:	\$ 50.00	\$ _____
[Shop owner dues alternative: donate			
goods suitable for door prizes?	approx. retail \$ 50.00	Yes _____]	
<u>Oak Leaf</u> newsletter received electronically	included	\$ - 0 -	
<u>Oak Leaf</u> printed & mailed	\$ 10.00	\$ _____	
Newsletter <u>only</u> membership (= no privileges)	\$ 20.00	\$ _____	
Library fund donation			
Used to maintain & add to our lending library, which is free for members to use	discretionary	\$ _____	
	total payment	\$ _____	

check # _____ or cash _____

_____ / _____ / _____

2011-2012 Programs and Workshops

September, 2011— Lecture only, no workshops

Carol Wilhoit
Get Your Stash Together
Thurs, September 8, 2011

Is your fabric stash so overwhelming that you
aren't able to locate the pieces you want?
Carol is here to help!

November, 2011—Fine Art of Fiber
Nov 3-6, no meeting or workshops

December 1, 2011—Potluck at Gloria Dei, no workshops

October, 2011— Ellen Anne Eddy, Lecture & Two Full Day Workshops

Ellen Anne Eddy

The Color Cookbook
Approach

Thurs, October 6,
2011



Friday Workshop
Thread Magic 1:
Exploring the straight stitch
October 7, 2011
\$68 (non-members \$78)



Saturday
Workshop
Sheer Magic
October 8, 2011
\$68
(non-members \$78)



January, 2012— Deb Karasik, lecture & Two Full Day Workshops

Deb Karasik
of Quilt Mavens
Trunk Show
Thursday,
January 5, 2012



Friday Workshop
Midnight in the
Forest
January 6, 2012
\$79
(non-members \$89)



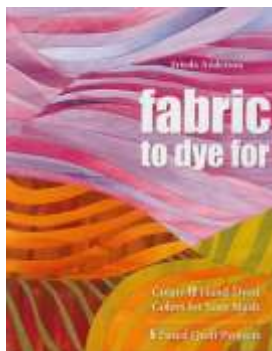
Saturday
Workshop
Batik Wheels
January 7, 2012
\$79
(non-members \$89)
+\$15 pattern fee



2011-2012 Programs and Workshops,

February, 2012, Frieda Anderson, Lecture & Two Full Day Workshops

Frieda Anderson
Fabrics to Dye For
February 2, 2012



Friday Workshop
Frieda's Free Motion Machine Quilting
February 3, 2012
\$72 (non-members \$82)



Saturday Workshop
Flooded With Color Dye Class
February 4, 2012
\$72
(non-members \$82)



March, 2012, Denise Havlan, Lecture & Two Full Day Workshops

Denise Havlan
Evolution of one Quilter
March 1, 2012



Friday Workshop
Borders and Cornerstone
Free Motion Quilting
March 2, 2012
\$68
(non-members \$78)



Saturday Workshop
TBD
March 3, 2012
\$68
(non-members \$78)



Thursday, April 5, 2012, IQI's Quilter's Fair—Keep those donations coming!

May, 2012, Virginia Carlson, Lecture and Two Full Day Workshops

Virginia Carlson
How I Got to Creativity and Didn't Know it!
Thursday, May 3, 2012



Friday Workshop
Surface Design for Art Quilters
May 4, 2012
\$55 (non-members \$65)



Saturday Workshop
How to Start With Art Quilts
May 5, 2012
\$55 (non-members \$65)



Thursday, June 7, 2012, Annual Meeting and Potluck At Gloria Dei

Most workshops need to have a minimum number of participants signed up 60 days in advance in order for the workshop to go ahead, so please note the workshop dates and sign up at least 60 days in advance in order to make sure that the workshop you want will be available.

IQI Workshop Registration Form for 2011-12

Name: _____

Phone: _____ E-mail address: _____

Non-members only: _____

Address	City	St.	Zip
---------	------	-----	-----

For each workshop, please circle the Member or Non-Member Price.
Amount remitted with each form should be the total of all circled amounts.

Remember: If you host a workshop you will get a coupon for one FREE workshop!

Date	Workshop Title	Member	Non-Member
October 7, 2011	Ellen Anne Eddy – Thread Magic 1: Exploring the straight stitch	68.00	78.00
October 8, 2011	Ellen Anne Eddy – Sheer Magic	68.00	78.00
January 6, 2012	Deb Karasik – Midnight in the Forest	79.00	89.00
January 7, 2012	Deb Karasik – Batik Wheels **\$15.00 pattern fee paid to the teacher**	79.00	89.00
February 3, 2012	Frieda Anderson – Frieda's Free Motion Machine Quilting **	72.00	82.00
February 4, 2012	Frieda Anderson – Flooded with Color Dye Class **	72.00	82.00
March 2, 2012	Denise Havlan – Borders and Cornerstone Free Motion Quilting	68.00	78.00
March 3, 2012	Denise Havlan – TBD	68.00	78.00
May 4, 2012	Virginia Carlson – Surface Design for Art Quilters	55.00	65.00
May 5, 2012	Virginia Carlson – How to Start with Art Quilts	55.00	65.00
	TOTAL AMOUNT DUE:		

Supply lists are available on the IQI website: www.illinoisquiltersinc.org

Bring a completed form with check or cash to a monthly meeting or send the completed form with a check payable to IQI to:

Chris Deering
7310 N Claremont Ave
Chicago IL 60645
cdeering@rcn.com
773-761-7497

Refunds are available up to 30 days in advance minus a \$5 per-workshop-day handling fee. Requests for refunds must be in writing and sent to the workshop registration coordinator.

IQI Library News

A big THANK YOU goes out to the membership for checking out an amazing amount of books at the May meeting, making our job this summer a little easier. These books will all be due at the September meeting at Beth Hillel. We will be e-mailing or phoning reminders in late August.

This summer we plan to inventory the collection and put it in order as we box the books in preparation for moving the collection out of storage and back to our meeting place.

Here are a couple of new (to us) books in our collection.

IQI Librarians –

Linda Feinberg, Barbara Feinberg, Judith Maffris
Library@illinoisquiltersinc.org



Of Interest to Quilters

Shipshewana Quilt Festival

June 22-25, 2011

www.ShipshewanaQuiltFest.com

Keynote speaker: Kay England

Workshops / Quilts & Vendor Show / Quilter's Schoolhouse / Shipshewana Backroads Shop Hop / Area Activities

Topeka/Honeyville Quilt Show and Sale

June 18, 2011 9-5

June 21-23, 2011 9-5

095 S. 900 W. - Topeka, IN

260.593.2689

Quilt Gardens Tour ...along the Heritage Trail (Indiana)

18 gigantic quilt patterned gardens

<http://www.amishcountry.org/things-to-do/quilt-gardens>

Of Interest to Quilters

Northern Illinois Quilt Fest will be held July, August and September, 2011. As part of this event, anchor sites across Northern Illinois' six counties will be hosting a quilt exhibit for that three month period of time. Other events, both quilt-related and non-quilt-related will be held in each of the six counties. Events within the counties will be posted at the county websites. See the individual websites or call to find out more information about what's offered at each location.

There are way too many events to list, but here is the website link to the listing of the events:

<http://www.northernillinoisquiltfest.com/events.html>

A link to quilt shops in the area:

http://www.northernillinoisquiltfest.com/quilt_shop_hops.html

Lake County:

Highland Park Historical Society, 326 Central Ave., Highland Park, IL 60035, 847-432-7090, www.highlandparkhistory.com
Lakes Region Historical Society Museum, 847 Main St. Antioch, IL 60002. 847-395-7337, <http://lakesregionhistory.org/> (free brochure at Village Hall)

Lake County Discovery Museum, 27277 N. Forest Preserve Rd. Wauconda, IL 60084 (West of Fairfield Rd on Rt. 176), 847-968-3400 http://www.lcfdp.org/discovery_museum/

McHenry County:

McHenry County Historical Society & Museum, 6422 Main St, Union, IL 60180, 815-923-2267, www.mchsonline.org
Grace Farm Studios, 2719 Franklinville Road, Woodstock, IL 60098, 815-790-8895, <http://gracefarmstudios.com>

McHenry County College, 8900 US Highway 14, Crystal Lake, IL 60012-2761, 815- 455-3700, <http://www.mchenry.edu/>

SPECIAL ATTRACTION: Countryside Flowershop, Garden Center & Nursery, 5301 E Terra Cotta Ave., Crystal Lake, IL 60014-3698, 815-459-8130, <http://countrysideflowershop.com> July 9th: "How to Plant a Quilt Garden," September 17-18th: Quilt Show, Quilt Garden

SPECIAL ATTRACTION: The Gazebo Quilters and Huntley Park District will be presenting a weekend of Quilts of Valor and Under My Wings with internationally renowned speaker, Marianne Fons at the Cosman Center in Huntley, August 19 & 20

Winnebago County:

Klehm Arboretum & Botanic Garden, 2715 South Main Street, Rockford, IL 61102, 815-965-8146, www.klehm.org
Midway Village Museum, 6799 Guilford Rd, Rockford, IL 61107, 815-397-9112, www.midwayvillage.com

Rockford Art Museum, 711 North Main Street, Rockford, IL 61103-6900 815- 968-2787, www.rockfordartmuseum.org

Tinker Swiss Cottage Museum, 411 Kent, Rockford, IL 61102-2915, 815-964-2424, www.tinkercottage.org

Stephenson County:

Stephenson County Historical Society, 1440 South Carroll Ave. Freeport, IL 61032, 815-232-8419, <http://www.stephcohhs.org/>

Jo Daviess County:

Galena History Museum, 211 S. Bench St., Galena, IL 61036, 815-777-9129, <http://www.galenahistorymuseum.org>
Midwest Medical Center, One Medical Center Drive, Route 20 West, Galena, IL 61036, 815-776-9200
Visitor's Center, 123 N. Commerce St., Galena, IL 61036, 815-777-3310, <http://www.visitgalena.org>

The Old Market House, 123 N. Commerce St., Galena, IL 61036, <http://www.visitgalena.org>

Of Interest to Quilters



"A Night with Jennifer Chiaverini"

A BENEFIT FOR PROJECT LINUS

Friday July 22, 2011
6:30 PM

\$50 per person ♥ Peoria Civic Center ♥ Peoria, Illinois



On Friday, July 22nd, 6:30 pm at the Peoria Civic Center, Illinois, everyone is invited to *A Night with Jennifer Chiaverini: A Benefit for Project Linus*. Ms. Chiaverini will be sharing excerpts from her soon to be released book, *The Wedding Quilt*. Quilts made from the "votes" will be on display, and she will announce the gender of Sarah's twins! This is a night for book lovers, quilting enthusiasts and anyone that knows the power of a hand-made blanket given to a child in need.

♥ ♡ **Join Us** ♡ ♥

A Night with Jennifer Chiaverini

A Benefit for Project Linus

Dinner ~ Keynote~ Book Signing ~ Drawings~ Prizes

Friday July 22, 2011
6:30 PM

\$50 per person ♥ ♡ Peoria Civic Center- Peoria, Illinois

www.projectlinus.org ~ 309-585-0686 ~ carol@projectlinus.org

Purchase your tickets now by going to:
www.projectlinus.org/institutedinner.html

Join us for a lovely evening of great food, inspiration and fun!

Meeting & Workshop Locations, Contact Info

Note location changes effective 9/1/2011

All general Thursday night meetings (with the exception of December & June Potlucks) will be held at our Beth Hillel in Wilmette (note slight name change)

Beth Hillel Congregation Bnai Emunah

3220 Big Tree Lane

Wilmette, Illinois 60091



All regularly scheduled workshops, service days, and December & June Potlucks will be held at:

Gloria Dei Lutheran Church

1133 Pfingsten Road

Northbrook, IL 60062



Board meetings are held on the 3rd Monday at 7:15 pm at the Wilmette Public Library, 1242 Wilmette Ave, Wilmette

CONTACT INFO:

You can send mail to our post office box at:

Illinois Quilters Inc. , PO Box 39, Wilmette, IL 60091

Board & committee chair contact
info on last page.

IQI Meeting Cancellation Policy: Meetings will be cancelled due to inclement weather or other emergencies at the discretion of the President. Members will be notified by email or phone. Members are urged to use common sense in travel.