

IQI

PO BOX 39

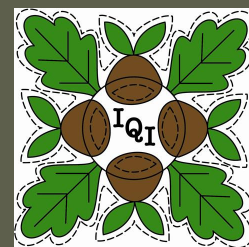
WILMETTE, IL 60091

WEBSITES:

WWW.ILLINOISQUILTERS.ORG

WWW.ILLINOISQUILTERSINC.ORG

[HTTP://ILLINOISQUILTERS.COM](http://ILLINOISQUILTERS.COM)



The Oak Leaf

VOLUME 31, ISSUE 1

SEPTEMBER, 2011

COMING UP!

- **Thursday, September 1, 2011**—First General guild meeting of the 2011-2012 year @ **Beth Hillel**. Doors open at 6:45 for signups, library and socializing. Meeting starts @ 7:30 pm. Speaker will be **Carol Wilhoit**, Get Your Stash Together.
- **September 15, 2011**, Deadline for entries and Boutique signup for Fine Art of Fiber. Forms can be found at: <http://www.fineartoffiber.org/forms.htm>
- **Saturday, September 16—Service Day** at Gloria Dei, Northbrook
- **Monday September 19, 7:15 PM, Board Meeting** at Wilmette Public Library.
- **Oct 6, 2011 Meeting:** Ellen Anne Eddy - The Color Cookbook Approach
- **Oct. 7,8 2011 Workshops:** Ellen Anne Eddy

Inside this issue:

October Workshops	2
Fine Art of Fiber	3
Program Calendar	4
Library	5
Website News	6
2011 Programs /Workshops	7-8
Of Interest to Quilters	9
Location information	10
Board and Committee	11
Oct Workshop Info	12-14
Forms, Forms, Forms!	15-20

President's Message

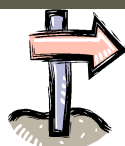
Welcome back!

We have a great year ahead of us with wonderful speakers, exciting workshops, and, of course, the companionship and support of fellow quilters. Ellen Pomes has redesigned our website and it's beautiful. I think you'll find it informative and easy to use.

As usual, we are looking for volunteers. Ellie Rest and Val Curtis are starting a new committee—raffle quilt marketing. Previously this has been done by the raffle quilt committee. The board felt separating the making and marketing of the raffle quilt would make both jobs easier. We're looking for several people to give Ellie and Val a hand with this task.

We still need several people to coordinate the 2013 raffle quilt. It's not any too soon to begin this project. If you have questions about how to handle this project, talk to Jim Pilarski, Georgia Cibul or Stephanie Strand.

Happy quilting!
Jennie Gordon
Email: president@illinoisquilters.com



Don't Forget! New Meeting Location!

Our first Guild meeting of our guild year 2011-2012 will be at **Beth Hillel** in Wilmette. Location information and maps can be found on page 18.

Come join us for a Service Day!

Come join us the 3rd Saturday of each month at Gloria Dei for a day of service, friendship and fun. You can bring your own service project, or we will have some kits available to work on. Please bring sewing machine, basic sewing supplies, lunch. **We'd love to have you join us!**



Bring to IQI Meeting!

- Nametag
- Show & Tell
- Personal datebook to schedule workshops, volunteer dates & events
- Entry forms for Fine Art of Fiber!!!
- Checkbook to sign up for membership for 2011-2012, workshops and raffle tickets
- 2011 Raffle Ticket Stubs
- Items to donate to the Quilter's Fair
- Yourself (and a friend-guest fee just \$5)

IQI 2012 Quilters Fair !

*Don't forget to bring in **donations** for the April 2012 Quilter's Fair.*

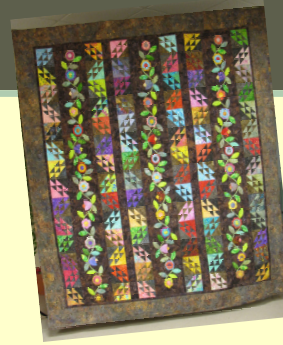
These collected items will be sold in at the April, 2012 meeting to raise money for our guild.

If you have ever bought a book twice or if you have tool sitting around that you never use, IQI would be happy to take it off you hands.

Thank you for you help and support,

Valerie Curtis

PAGE 2



2011 Raffle Quilt

Make sure ticket sales are submitted to Jim Pilarski. He will accept checks or cash. Remember, all sales outside of the Fine Art of Fiber are 100% to IQI. Jim also has more tickets for sale. Jim Pilarski IndexJim@aol.com

October workshops—Ellen Anne Eddy

Registration form: http://illinoisquilters.com/events/workshops/2011_workshop_reg_form.pdf

Thread Magic Mastery: Working with All Kinds of Threads

October 7, 2011

Explore working with all kinds of threads from thick to thin to lumpy using a mixture of machine quilting, embroidery, thread sketching, embellishing and machine beading to explore all these techniques workshop

Skill level: Beginner to expert

Skill Set: Straight and zigzag Stitch vocabulary, bobbin Work applique, machine, beading, couching and globbing



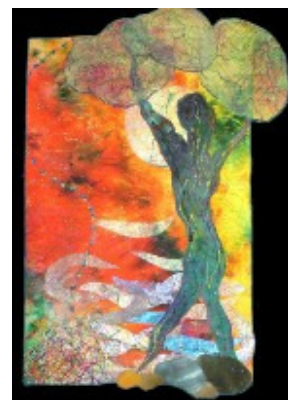
2011 Free Motion Applique Mastery

October 8, 2011

Build fantastic landscapes and natural with Cut-away and direct appliqué techniques. Add sheers, Angelina fiber, Couching, brocade and cheesecloth for a unique landscape.

Skill level: Beginner/ Expert.

Skill Set: Direct Applique, Cut-away Applique, Angelina Fiber, Working with sheers and brocades, couching, soft and hard edge applique.





You won't want to miss the Fine Art of Fiber. This year the show will be held Thursday – Sunday, November 3-6 at the Chicago Botanic Garden. For those new to IQI, FAOF is run by three guilds: IQI North Suburban Needle Arts Guild, and Weavers Guild of the North Shore and is one of the oldest and most prestigious needle art shows in the Midwest.

Each guild is a not-for-profit organization focusing on education and awareness as well as the promotion of fiber arts, quality design and craftsmanship, and the presentation of fiber heritage. The traditions include spinning, natural dyeing of fibers and fabric, weaving, quilting, knitting and much, much more.

FAOF features fashion shows, an exhibit of quilts and various types of needle arts, boutiques with sale items as well guild raffles and a large silent auction. Everything is made by guild members. And most important, it is run by volunteer guild members.

Members are encouraged to submit pieces for the show and make donations of needle-made items for the silent auction. Participation in the Boutique with items to sell including quilts not only helps make money for IQI but the individual member as well. **Submission forms for FAOF activities are located in the members-only section of the FAOF website: www.fineartoffiber.org.** Submission deadlines are close at hand—the September IQI meeting (or 9/15 by snail mail). Sign ups for volunteers will start at the September meeting, so plan to participate. It is an exciting event.

Admission is free. Get submission forms and information regarding hours at the website: <http://fineartoffiber.org/>

SILENT AUCTION ITEMS NEEDED!!

It's that time of year again - Fine Art of Fiber will be here before you know it! Round up your beautiful small items - made with needle and thread - for the Silent Auction. Items sold through the auction make money for our guild. Donations will be accepted at the September and October meetings.

Please fill out a donation form

<http://www.fineartoffiber.org/Forms/2011SilentAuctionForm.pdf>

and include it with your item. We'd love to have a wide array of items appropriate for fall or holiday giving.

Please call or email Chris Deering if you have any questions.

chris@toldme.com 773-761-7497

Thanks!!



IQI 2011-2012 program year



August

Service Day Aug. 20, 2011

September

Meeting: Carol Wilhoit - Get Your Stash Together Sept. 1, 2011

Service Day Sept. 16, 2011

October

Meeting: Ellen Anne Eddy - The Color Cookbook Approach Oct. 6, 2011

Workshop: Ellen Anne Eddy: Thread Magic 1-Exploring the straight stitch Oct. 7, 2011

Workshop: Ellen Anne Eddy - Sheer Magic Oct. 8, 2011

Service Day Oct. 21, 2011

November

Fine Art Of Fiber Nov. 3, 2011

Service Day Nov. 18, 2011

December

Meeting: December Potluck Dec. 1, 2011

January

Meeting: Deb Karasik of Quilt Mavens Trunk Show Jan. 5, 2012

Workshop: Deb Karasik of Quilt Mavens - Midnight in the Forest Jan. 6, 2012

Workshop: Deb Karasik of Quilt Mavens - Batik Wheels Jan. 7, 2012

Service Day Jan. 20, 2012

QUILT-IN! Jan 27-29, 2012

February

Meeting: Frieda Anderson Fabrics to Dye For Feb. 2, 2012

Workshop: Frieda Anderson - Free Motion Machine Quilting Feb. 3, 2012

Workshop: Frieda Anderson: Flooded With Color Dye Class Feb. 4, 2012

Service Day Feb. 17, 2012

March

Meeting: Denise Havlan: Evolution of one Quilter March 1, 2012

Workshop: Denise Havlan: Borders and Cornerstone Free Motion Quilting March 2, 2012

Workshop: Denise Havlan: Saturday Workshop TBD March 3, 2012

Service Day March 16, 2012

April

Meeting: IQI's Quilter's Fair April 5, 2012

Service Day April 20, 2012

May

Meeting: Virginia Carlson: How I Got to Creativity and Didn't Know it! May 3, 2012

Workshop: Virginia Carlson: Surface Design for Art Quilters May 4, 2012

Workshop: Virginia Carlson: How to Start With Art Quilts May 5, 2012

Service Day May 18, 2012

June

Annual Meeting and Potluck At Gloria Dei June 7, 2012



IQI Library

Welcome back to the WHOLE Library collection!

Moving back to Beth Hillel enables us to display the entire book holdings in our Library once again.

You will notice some changes to the library. To make it easier to find what you are interested in, the Library has been divided into subjects and color coded. We will have approximately 12 headings that will each be assigned a specific color, with that color taped on the cover and spine of each book. This will make it easier to shelve and keep in order at each meeting. Color coded signs will be on display.

Some samples (you'll see the whole list at the meeting) of subjects include:

Blocks;
Techniques;
Appliqué - even though this is a technique, we have a lot of books on this topic and are separating it out;
History / Geography;
Seasonal / Events / Children;
Quilting (machine / hand / patterns)



Look for new listings of our catalog on the IQI website soon. We will be adding a subject/title list as well as title and authors listings.

Please let us know if you think a book has been placed in the wrong subject – a lot of books could tip one way or another and your three Librarians have had some lively debates on where to place them.

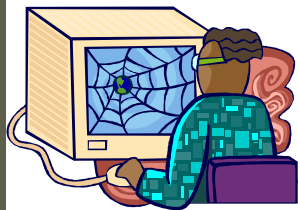
We hope you enjoy this new system – it's a work in progress (not exactly a UFO but similar).

Please remember to return all checked out books to at the September 1st meeting.

Your hard working Librarians,

Linda Feinberg
Barbara Feinberg
Judy Maffris
Library@illinoisquilters.com





Note from your webmaster

We spent the summer redesigning and rewriting our website. We also moved it to a new host which is saving IQI more than \$800 across the next 3 years! Beyond that, we hope that the new organization will make it easy for you to find the information you're looking for. We have 3 website addresses that will all get you to the IQI website:

the newest: **<http://illinoisquilters.com>** [you can just type in illinoisquilters.com and it works]

as well as the ones we had before :

www.illinoisquilters.org and **www.illinoisquiltersinc.org**

As your website administrator, I'm trying very hard to make sure that all the links work and that the site works in all browsers. Right now the site works best on Firefox and Chrome. I'm learning as I go and making improvements (I hope!) every month. So please let me know if something is not working for you (epomes@hotmail.com or info@illinoisquilters.com). I appreciate your input and assistance. Thank you!

As a part of this move—**email addresses for the board have been changed:**

info@illinoisquilters.com (for website and newsletter)

president@illinoisquilters.com

membership@illinoisquilters.com

workshops@illinoisquilters.com

library@illinoisquilters.com

Everything you need to know!

Supply lists, registration forms, membership application,
Quilt-in registration, program calendar, fine art of fiber entry forms....

ALL of this information can be found
on our website:

<http://illinoisquilters.com>

Quilt-In is Coming—Jan 27-29, 2012

This year's Quilt-In will be held on January 27-29 at Techny Towers in Northbrook. You'll arrive sometime on Friday afternoon or evening and stay until Sunday afternoon. Your registration will include meals on Saturday and brunch on Sunday (Friday night dinner is on your own); a single, double or triple room (depending upon availability), workshops & more. Everyone pitches in and brings snacks that are available throughout the duration.

All workshops are first come, first served, so please turn in your registration form (See page 17) ASAP.

Membership Renewal Reminder!!!

Please remember that to be included in the directory and enter items into Fine Art of Fiber—you **MUST** be an active member of IQI. Submit your [membership application](#) today!

2011-2012 Programs and Workshops

PAGE 7

September, 2011— Lecture only, no workshops

Carol Wilhoit
Get Your Stash Together!
Thursday, Sept 1, 2011

Is your fabric stash so overwhelming that you aren't
able to locate the pieces you want?
Carol is here to help!

November 3-6, 2011—

Fine Art of Fiber
no meeting or workshops

October, 2011— Ellen Anne Eddy, Lecture &
Two Full Day Workshops

Ellen Anne Eddy

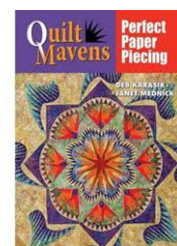
The Color Cookbook
Approach

Thurs, October 6,
2011



January, 2012— Deb Karasik,
Lecture & Two Full Day Workshops

Deb Karasik
of Quilt Mavens
Trunk Show
Thursday,
January 5, 2012



Friday Workshop
Midnight in the
Forest
January 6, 2012
\$79
(non-members \$89)



Saturday
Workshop
Batik Wheels
January 7, 2012
\$79
(non-members \$89)
+\$15 pattern fee



Ellen Anne Eddy

Friday Oct 7, 2011

Thread Magic Mastery:
Working with All Kinds of Threads
Members: \$68

Non-Members: \$78



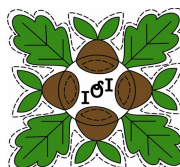
Ellen Anne Eddy

Saturday Oct 8, 2011

Free Motion Appliqué Mastery

Members: \$68

Non-Members: \$78

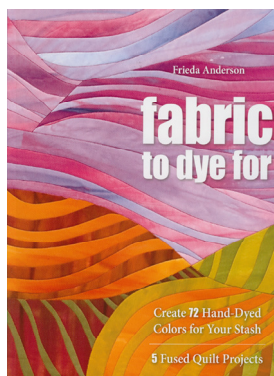


January 27-29, 2012
IQI Annual QUILT-IN

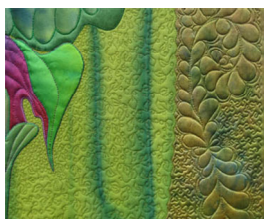
2011-2012 Programs and Workshops,

February, 2012, Frieda Anderson, Lecture & Two Full Day Workshops

Frieda
Anderson
Fabrics to
Dye For
February 2,
2012



Friday Workshop
Frieda's Free Motion Machine Quilting
February 3, 2012
\$72 (non-members \$82)



Saturday Workshop
Flooded With
Color Dye Class
February 4, 2012
\$72
(non-members \$82)



March, 2012, Denise Havlan, Lecture & Two
Full Day Workshops

Denise Havlan
Evolution of
one Quilter
March 1, 2012



Friday Workshop
Borders and
Cornerstone
Free Motion
Quilting
March 2, 2012
\$68
(non-members \$78)



Saturday
Workshop
TBD
March 3, 2012
\$68
(non-members \$78)



Thursday, April 5, 2012, IQI's Quilter's Fair—Keep those donations coming!

May, 2012, Virginia Carlson, Lecture and Two Full Day Workshops

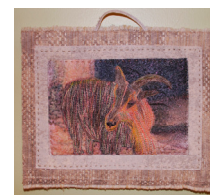
Virginia Carlson
How I Got to
Creativity and
Didn't Know it!
Thursday, May 3,
2012



Friday Workshop
Surface Design for Art Quilters
May 4, 2012
\$55 (non-members \$65)



Saturday Workshop
How to Start With Art Quilts
May 5, 2012
\$55 (non-members \$65)



Of Interest to Quilters

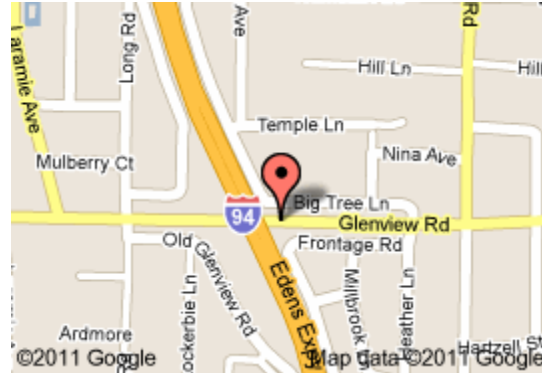
Quilt events coming up in the area:

Sept 8-10, 2011	Madison Quilt Expo	http://wiquiltexpo.com/
Through Sept 30, 2011	Northern Illinois Quilt Fest Multiple events/venues	http://www.northernillinoisquiltfest.com/ events.html
Through Sept 30, 2011	Crazy Quilts and More— Wed-Sun 1-4	www.highlandparkhistory.com
Sept 16-17, 2011	NSQG 2011 Quilt show	www.nsqq.net
Sept 17-18, 2011	Harvest of Quilts IX Show - CRAZY ABOUT QUILTING	www.raintreequiltersguild.org Vanderburgh 4-H Center Auditorium Evansville, IN
September 11-12, 2011	Massac Quilt Guild Quilt Show	Harrah Riverfront Event Center Metropolis, IL
September 16-18, 2011	Quilt Study Retreat at Cedar Valley Retreat Center, West Bend, WI with well-known quilt historian Merikay Waldvogel and Sylvia Adair.	http://www.wqsg.org/ RetreatInformation.htm
September 24-25, 2011	Willow River Piecemakers Quilt Show	Cashman Conference Center New Richmond, WI.
Sept 30—October 1	Pieceful Gathering Shop Hop Bus Trip	http://www.piecefulgathering.com/ pdf/bus_hop_2011.pdf
October 8-9, 2011 Sat, Oct 8: 10-5pm Sun, Oct 9: 10-3pm	Lighthouse Legacies 2011 Quilt Show	Case High School 7345 Washington Ave Racine, Wisconsin
October 28 -29, 2011	11th Annual Quilt Show - Quilting Through the Ages	St Johns School Gym 114 East Third Street Waunakee, WI

Meeting & Workshop Locations, Contact Info

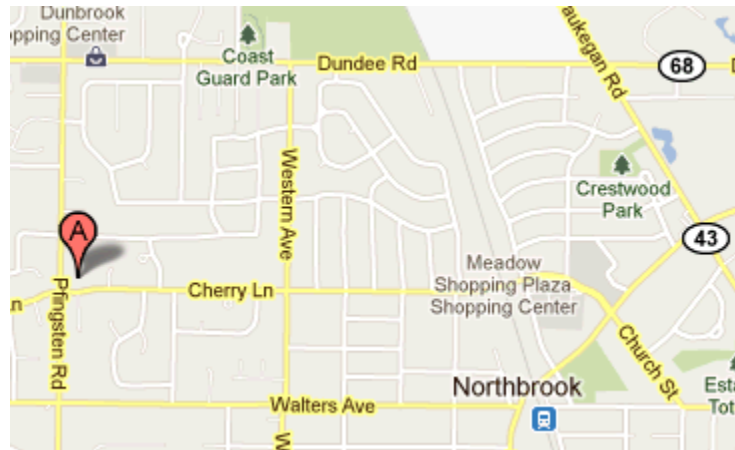
All general Thursday night meetings (with the exception of December & June Potlucks) will be held at our Beth Hillel in Wilmette

Beth Hillel Congregation Bnai Emunah
3220 Big Tree Lane
Wilmette, Illinois 60091



All regularly scheduled workshops, service days, and December & June Potlucks will be held at:

Gloria Dei Lutheran Church
1133 Pfingsten Road
Northbrook, IL 60062



Board meetings are held on the 3rd Monday at 7:15 pm at the Wilmette Public Library,
1242 Wilmette Ave, Wilmette

CONTACT INFO:

You can send mail to our post office box at: Illinois Quilters Inc. , P0 Box 39, Wilmette, IL 60091

IQI Meeting Cancellation Policy: Meetings will be cancelled due to inclement weather or other emergencies at the discretion of the President. Members will be notified by email or phone. Members are urged to use common sense in travel.

2011-12 IQI Board & Committee Roster

PAGE 11

BOARD OF DIRECTORS

home phone

cell or work

President Jennie Gordon
 VP-Programs Diana Burrows
 VP-Contracts Roberta Levin
 Treasurer Esther Behnke
 Secretary Donna Derstadt
 Fine Art of Fiber* Ardis Mistak
 Judy Curtis
 Jan Aaron

Membership* Cynthia Churchwell
 & Georgia Cibul
Oak Leaf Editor Ellen Pomes
 Workshops* - Hosts Mary Meyers
 - Registrations Chris Deering
 Member-at-Large Diane Capitani

**shared office / shared vote*

COMMITTEE CHAIRS:

Challenge Jim Pilarski
 Library Barbara Feinberg
 & Linda Feinberg
 & Judith Maffris
 Publicity Angel Sidor

Website Ellen Pomes
 Quilt-In Deb Pine
 Fay Stickler
 Amy Spungen
 Laurie Golden
 Raffle Quilt 2012 Georgia Cibul
 & Stephanie Strand

Raffle Quilt 2011 Jim Pilarski
 Service / Friendship Lynn Bradburn
 Diana Burrows
 Historian Diane Capitani

Did you know?

That each member is entitled to one free ad per year in the *Oak Leaf*? You can use it to advertise any goods or services for sale.

Please submit your ad (1/4 page or smaller) to info@illinoisquilters.com - just see all the contact information and submission deadlines below.

About the Oak Leaf: Advertising Rates & Contact Info

The Oak Leaf is published nine times yearly by Illinois Quilters Inc. Advertising from individuals, groups and businesses is welcome and subject to approval by the editor.

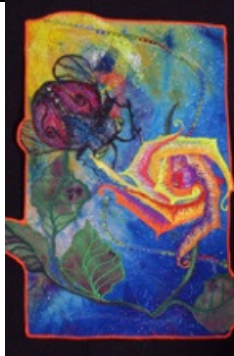
Please address any correspondence to Ellen Pomes, editor, by email to:

info@illinoisquilters.com

Size	Monthly	Yearly (9-10 issues)
Business Card	\$5	\$30
¼ Page	\$8	\$60
½ Page	\$15	\$120
Full Page	\$30	\$240


2011 Thread Magic Mastery: Working with All Kinds of Threads

October 7, 2011—Ellen Anne Eddy

<p>Explore working with all kinds of threads from thick to thin to lumpy using a mixture of machine quilting, embroidery, thread sketching, embellishing and machine beading to explore all these techniques workshop</p> <p>Skill level: Beginner to expert</p> <p>Skill Set: Straight and zigzag Stitch vocabulary, bobbin Work applique, machine, beading, couching and globbing</p> <p>1 Session, 6 hours project oriented class</p>	
<p>Demo stitch vocabulary, darning foot, solid embroidery on separate fabric</p> <p>Doodle ling</p> <p>Garnet Stitch</p> <p>Zigzag directions</p> <p>Stippling</p> <p>Signatures</p> <p>Students practice stitch vocabulary on scrap fabric</p> <p>Inspect practice pieces</p> <p>Create background Atmospheric elements</p> <p>Moons, suns and swirls, and water</p> <p>Rocks and leaves</p> <p>Bobbin Work</p> <p>Color theory</p> <p>working with thick thread</p> <p>Apply bobbin work applique</p> <p>Machine Beading, couching and globbing.</p>	<p>Materials for 11" x15" Wall Hanging (You can choose what size you would like your wall hanging to be. 11" x15" is simply a suggestion)</p> <p>1/2 yard fabric for top (hand-dye available)</p> <p>11"x 15" piece decor bond or Hydrostick (preferred)</p> <p>Totally Stable (optional if you wish to draw your own pattern)</p> <p>Decorative threads- Metallics, polyester, pearl cotton, both thick and thin. (each metallic or thicker thread should have a light-weight, #40 polyester thread to match)</p> <p>Novelty yarns(optional)</p> <p>9"x9" poly felt</p> <p>1 11"x 8" sheet of Steam a Seam 2</p> <p>#5-8 Seed beads</p> <p>Aqua Film</p> <p>Angelina/Cristalina Fiber</p>
<p>Tools:</p> <p>Zigzag sewing machine with darning foot</p> <p>Halo hoop</p> <p>Extra bobbin case (optional for Pfaffs, drop in bobbin machines)</p> <p>#90 topstitching needles</p> <p>Extra Bobbins (at least 10)</p> <p>Marking pencils or chalk (Blackboard chalk will work)</p>	<p>Kit available:</p> <p>1/2 of hand dyed fabric (your choice), 1 sheet of Steam-a-Seam 2 Stitch vocabulary, felt, all Stabilizers and patterns for \$19</p> <p>Threads are extra.</p> <p>Hand-dyes, tools and threads are available if needed</p>
<p>Doubts or concerns? Ellen Anne Eddy, 125 Franklin, Porter, IN 46304 219-9210885</p> <p>E-mail at ellenanneeddy@gmail.com Web site at www.ellenanneeddy.com</p> <p>Office Manager at Threadmagik@gmail.com 405-735-3703 or 405-361-5356</p>	

2011 Free Motion Applique Mastery

October 8, 2011 - Ellen Anne Eddy

<p>Build fantastic landscapes and natural with Cut-away and direct appliqué techniques. Add sheers, Angelina fiber, Couching, brocade and cheesecloth for a unique landscape.</p> <p>Skill level: Beginner/ Expert.</p> <p>Skill Set: Direct Applique, Cut-away Applique, Angelina Fiber, Working with sheers and brocades, couching, soft and hard edge applique.</p>	
<ol style="list-style-type: none"> 1. Build Landscape <ol style="list-style-type: none"> A. Discuss technique choices <ol style="list-style-type: none"> i. Direct appliqué ii. Cut-away B. Stitch choice <ol style="list-style-type: none"> i. Soft edge ii. Hard edge 2. Choose threads 3. Create elements on felt stabilizer 4. Trim out design 5. Edging Appliqué 6. Adding decorative stitching over the overlay 7. Couching 	<p>Materials for 11"" Wall Hanging</p> <p>(You can choose whatever size you wish)</p> <ul style="list-style-type: none"> • 1/2 yard fabric for top (hand-dye available) • 11" square Hydrostick • 2-5 sheets of Steam a Seam 2 12" wide • 2 9" Squares of Polyester Felt • several scraps of sheers, lames, lace, or organza fabric for overlay • Decorative threads Metallics, polyester both thick and thin. (each metallic or thicker thread should have a, #40, rayon thread to match) • Angelina and crystalina fiber <p>I have fabrics, threads and stabilizers available for students in class. If you have any doubts about materials or tools, please call or mail me. I'll help make sure you have what you need.</p>
<p>Tools:</p> <ul style="list-style-type: none"> • Zigzag sewing machine with appliqué foot, and darning foot • #90 topstitching needles • Extra Bobbins (5 10) • 1 pair, pelican (appliqué) scissors • Marking pencils or chalk • quilt-tack (you may use mine) • halo hoop 	<p>Kit available:</p> <p>1/2 of hand dyed fabric (your choice), 2 sheets of Steam-a-Seam 2, all. Stabilizers for \$17 Threads are extra. Hand-dyes, tools and threads are available if needed.</p>
<p>Doubts or concerns? Ellen Anne Eddy, 125 Franklin, Porter, IN 46304 219-9210885</p> <p>E-mail at ellenanneeddy@gmail.com Web site at www.ellenanneeddy.com</p> <p>Office Manager at Threadmagik@gmail.com 405-735-3703 or 405-361-5356</p>	

Ellen Anne Eddy—October workshops

P A G E | 4

Student Class Information— Please read this BEFORE class.

I know many of the things I use for creating my quilts are hard to find. I won't do kits for most classes because kits limit what I can bring you and limit your choices for your work. Instead I bring all kinds of resources into class for you so you can have what you need in class, without having to purchase something you don't want. Please bring anything you want to experiment with to class if you have them. But don't worry about finding things that you don't know where to get. Kit's for fabric and stabilizer are available. But I leave thread choices up to you. I'll bring in the right stabilizers, fusibles, hand-dyed fabrics, the best threads, and tools I trust. They're there for you to choose so you can pick exactly what you need and want in class. You can make a tab and settle up at the end of your class time.

A big part of enjoying a class is being able to participate and experiment. If your machine isn't working right, it makes that harder. I will make every effort to help you if your machine is in trouble, but there are things you should do to help avoid problems.

Please bring a machine you are familiar with! If you are borrowing a machine, make sure you know how to thread the machine, wind a bobbin, and change the feet. Bring your manual if you can, and all your attachments.

In general, sewing machines are like cars. They need regular maintenance. Before any machine class, please take your machine out, check that it has the correct feet, and that it's working properly. If it hasn't been tuned up in the last two years, please have that done. Your good experience in any machine quilting class depends on your machine being in its best condition.

You probably know what you need to make your sewing day more comfortable. If you are more comfortable with a special light, chair or a pillow, bring it. Also if you have an extending table for your machine, that can be a great help.

As a personal favor, please don't wear perfumes or anything with strong scents. Or clothes that have perfume on them. I'm quite allergic to them. Other people may be too.

If you have questions or problems with your machine, or anything you are having trouble finding, feel free to call me and discuss it before class. I may be able to bring just the right gadget or book to make things work better for you.

If you have doubts or concerns about what to bring, please contact me.

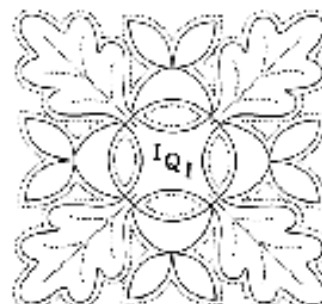
Ellen Anne Eddy, 125 Franklin, Porter, IN 46304 219-9210885	E-mail : ellenanneeddy@gmail.com
Office Manager at Threadmagik@gmail.com	Office Phone: 405-735-3703
Web site at www.ellenanneeddy.com	Blogs: practicalthreadmagic.blogspot.com ellenanneeddy.blogspot.com threadmagicevents.blogspot.com

Illinois Quilters, Inc

P.O. Box 39
 Wilmette, IL 60091
 www.illinoisquiltersinc.org

MEMBERSHIP APPLICATION

2011-2012

**Deadline for directory: September 15, 2011***Membership by Sep. 15 is essential to submit works for Fine Art of Fiber*

date _____

name : _____

address: _____

city: _____ state: _____ zip: _____

primary phone: (____) _____ other phone?: (____) _____

email address: _____

for newsletter and guild information; will be in directory unless checked: ☐ **don't publish email**

Please indicate: are you new to IQI _____? renewing _____? returning after an absence
 _____?

How did you learn of IQI? (friend, online search, etc.) _____

Guild service: Our bylaws encourage each member to provide a minimum of 4 hours of service to IQI's activities each year, such as serving on the Board or a committee, helping an officer with her/his duties, working at Fine Art of Fiber, helping to make quilts for charitable service. We would like to track and celebrate member participation this year and encourage you to keep an estimate of your time and efforts to support IQI. Please indicate your preferred area/s or expect a call from the membership committee to discuss opportunities:

- | | |
|--|---|
| charity quilts & projects | Fine Art of Fiber committee |
| library table at meeting | nominating committee |
| house a speaker in my home | membership table at meeting |
| host a workshop (assist teacher) | committee for member quilt challenge |
| host or arrange friendship meeting | Quilt-in committee (member retreat) |
| help with potluck meeting in Dec. or June | serve on the board |
| raffle quilt committee | demonstrate a technique (or two!): |

_____ *over →*

Optional -- to list professional quilting services in the directory

Shop Owners: please complete this information or provide a camera-ready b&w ad

business name _____

address _____ city _____ state _____ zip _____

phone (____) _____ hours _____

text (goods & services provided) _____

Full members: describe the quilting services or related activity you provide. Submit with this completed form a copy of credentials or documentation that support any claims made (ex.: 'certified appraiser'), as unsubstantiated claims will not be published.

Dues & Fees	Membership dues through June 2012:	\$ 50.00	\$ _____
[Shop owner dues alternative: donate			
goods suitable for door prizes?	approx. retail \$ 50.00	Yes _____]
<u>Oak Leaf</u> newsletter received electronically	included	\$ - 0 -	
<u>Oak Leaf</u> printed & mailed	\$ 10.00	\$ _____	
Newsletter <u>only</u> membership (= no privileges)	\$ 20.00	\$ _____	
Library fund donation			
Used to maintain & add to our lending library, which is free for members to use	discretionary	\$ _____	
	total payment	\$ _____	

check # _____ or cash _____

_____ / _____ / _____

IQI QUILT-IN REGISTRATION
26TH ANNUAL QUILT IN
January 27, 28, 29 2012
Divine Word Conference Center, Techny, Illinois

Name: _____

Address: _____

City, State, Zip: _____

Phone: _____ EMAIL: _____

I prefer a: Single Double Triple (circle your preference)

I would like to room with: _____

Please note: We will accommodate mutual rooming choices when deposits are received from all parties in that room.

I am a member of IQI: Yes No (\$25 additional charge)

Cost: \$220 for a double/triple room and \$255 for a single room (if available). There are a limited number of single rooms, and those with medical reasons receive first priority. Please note this on your form.

Please attach a check for \$130, payable to IQI for your reservation deposit.

Balance Due Jan 17, 2012

Mail registration and checks to:

Debbie Pine 180 Southgate Dr. Vernon Hills, IL 60061 or drop off
 your form at the Quilt In table during IQI meetings.

Workshop sign-ups are listed below and described on the back. Please indicate your first and second choices. Space is filled on a first come, first served basis. Any questions? Contact Debbie Pine 847-624-8261

Choices	Day/Time	Workshop	Teacher
	TBD	Hunters Star	Chris Deering
	Ongoing	Mystery Quilt	Georgia Cibul
	Ongoing	Stained Glass Slash/Dash	Harriet Bertsche
	TBD	Hand Applique - 102	Carole Bates
	TBD	Hand Applique- 103	Carole Bates

For committee use

Date received: Registration #:

Deposit amount: _____ Check # and Bank:

Most workshops need to have a minimum number of participants signed up 60 days in advance in order for the workshop to go ahead, so please note the workshop dates and sign up at least 60 days in advance in order to make sure that the workshop you want will be available.

IQI Workshop Registration Form for 2011-12

Name: _____ DATE: _____

Phone: _____ E-mail address: _____

Non-members only: _____

Address	City	St.	Zip
---------	------	-----	-----

For each workshop, please circle the Member or Non-Member Price.
Amount remitted with each form should be the total of all circled amounts.

Remember: If you host a workshop you will get a coupon for one **FREE** workshop!

Date	Workshop Title	Member	Non-Member
October 7, 2011	Ellen Anne Eddy – Thread Magic 1: Exploring the straight stitch	68.00	78.00
October 8, 2011	Ellen Anne Eddy – Sheer Magic	68.00	78.00
January 6, 2012	Deb Karasik – Midnight in the Forest	79.00	89.00
January 7, 2012	Deb Karasik – Batik Wheels **\$15.00 pattern fee paid to the teacher**	79.00	89.00
February 3, 2012	Frieda Anderson – Frieda's Free Motion Machine Quilting **\$15 kit fee paid to the teacher**	72.00	82.00
February 4, 2012	Frieda Anderson – Flooded with Color Dye Class **\$35 kit fee paid to the teacher OR bring 24 FQs of PFD fabric and kit fee is \$25.**	72.00	82.00
March 2, 2012	Denise Havlan – Borders and Cornerstone Free Motion Quilting	68.00	78.00
March 3, 2012	Denise Havlan – TBD	68.00	78.00
May 4, 2012	Virginia Carlson – Surface Design for Art Quilters	55.00	65.00
May 5, 2012	Virginia Carlson – How to Start with Art Quilts	55.00	65.00
	TOTAL AMOUNT DUE:		

Supply lists are available on the IQI website: www.illinoisquiltersinc.org

Bring a completed form with check or cash to a monthly meeting or send the completed form with a check payable to IQI to:

Chris Deering
7310 N Claremont Ave
Chicago IL 60645
chris@toldme.com
773-761-7497

Refunds are available up to 30 days in advance minus a \$5 per-workshop-day handling fee. Requests for refunds must be in writing and sent to the workshop registration coordinator.

**Fine Art of Fiber 2011
Silent Auction Submission Form**

Name _____ **Phone No.** _____

Donation _____ **Estimated Value \$** _____

Minimum Bid \$ _____

Member of: **IQI** _____ **NSNG** _____ **WGNS** _____

Your Guild(s) will be credited with the funds raised from your item.

Will you have other items for sale in:

The Boutique? _____ **Exhibition?** _____

Weavers' sale? _____

A copy of this form must be attached to all donations.

All donations should be submitted by the October Guild meetings.

**Thank you for your participation in this fundraiser for your
Guild(s).**

IQI Contact:

Chris Deering 7310 N Claremont Ave, Chicago IL 60645
(773-761-7497; cdeering@rcn.com)

NSNG Contacts:

Gretchen Alexander 1749 MacLean Court, Glenview IL 60025
(847-998-6040; Gretchen.alexander@sbcglobal.net)

Jan Swimmer 5243 Hilltop Road, Long Grove IL 60047
(847-821-0361; jandesign22@comcast.net)

WGNS Contact:

Marilyn Lindeman 1570 Asbury, Evanston IL 60201
(847-869-0698; marilynlinde@mac.com)

Entries are due Sept 15, 2011

Attach self-addressed stamped envelope
& photo here. (Please mark top of photo)

Fine Art of Fiber Exhibit Entry Form Entry Data

Please fill out completely and legibly. We cannot call you for further information.

Name: _____ Guild(s): _____

Address: _____

City, State, Zip: _____

Phone # : _____ Email address: _____

Title (not "untitled" please): _____

Multiple Entry Priority #: _____ of _____ Guild Project/Challenge: [] No [] Yes
FAOF Show Challenge : [] No [] Yes

Entry Size (accurate measurements in inches): Horizontal _____ Vertical _____

Detail any special hanging or other display requirements (including any display props you will provide):

Program & Show Card Data

List techniques used to make piece

e.g. hand woven, machine quilted, hand dyed, hand spun, machine embroidered, hand knitted, how it is embellished etc.:

Describe what you most want people to know about entry (note: this copy will be on show display card hung next to the entry)

Design source (e.g. original, pattern, kit, etc.): _____

FOR SALE? (25% of sale goes to Guilds/CBG.) [] No [] Yes Sale price: \$ _____

The undersigned entrant hereby agrees to hold IQI/NSNG/WGNS/Chicago Botanic Garden harmless for any and all damage or loss of any property left in their care, custody or control. (Check your home-owner insurance policy for coverage.) I have read and agree to the Exhibit Rules and Requirements.

Signature: _____ Date: _____