

IQI

PO BOX 39

WILMETTE, IL 60091

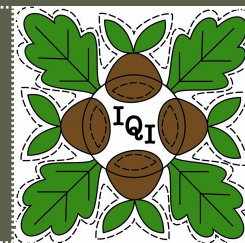
WEBSITES:

WWW.ILLINOISQUILTERS.ORG

WWW.ILLINOISQUILTERSINC.ORG

ILLINOISQUILTERS.COM

The Oak Leaf



VOLUME 31, ISSUE 9

MAY, 2012

COMING UP!

- May 3, 2012— **Meeting**—Maggie Weiss - **Personal Geography**—Beth Hillel, Wilmette IL
- May 5, 2012 —**Workshop**—Maggie Weiss—**Pop Art Block Quilts**
- May 19, 2012—**Service**—Gloria Dei, Northbrook, IL
- June 7, 2012—**Year End Potluck**—Gloria Dei, Northbrook, IL
- June 16, 2012—**Service**—Gloria Dei, Northbrook, IL
- June 23, 2012—Board Crossover Meeting
- July 21, 2012—**Service**—Gloria Dei, Northbrook, IL
- August 18, 2012—**Service**—Gloria Dei, Northbrook, IL
- September 6, 2012—**MEETING!** - Next year we start again!

Inside this issue:

June Potluck Information	2
Proposed 2012-13	
Slate of Officers	3
Fine Art of Fiber	4
April Treasurer's Report	4
IQI Library News	5
Of Interest to Quilters	6
NEW! May Workshop	7
Board and Committees	8

President's Message

I hope you are all planning to attend our May meeting and our annual business meeting/potluck in June. Maggie Weiss's beautiful quilts and silk screening will be an inspiration. I always look forward to our potlucks—the company and the food are terrific! Hope to see you there.

Happy Quilting,
Jennie Gordon



Bring to IQI Meeting

- Nametag
- Show & Tell
- Personal datebook to schedule workshops, volunteer dates & events
- Checkbook to sign up for the May, 2012 workshop
- Yourself (and a friend-guest fee just \$5)

Membership discount!

The IQI board voted to keep annual dues the same for 2012-13 and to allow a \$5 discount for memberships paid by June 30; accordingly, you can renew as early as the May 3rd member meeting for only \$45. We will have the applications forms at that meeting, or you can download one from our website.

Please remember to indicate on the volunteer list how you expect to support the guild. If you have a new idea, there is space to note that.

Remember, memberships paid after June 30 will cost \$50. The deadline for inclusion in next year's (printed!) directory and for participation in Fine Art of Fiber remains September 15.

June 2012 Potluck Information

Thursday, June 7 at Gloria Dei Church

With the wonderful spring weather we have had lately, it won't surprise you that, before we know it, it will be time once again, for ANOTHER IQI POTLUCK!

AREN'T YOU HAPPY!!!!!!

We will celebrate the end of our calendar year with our annual June potluck dinner, with delicious food (of course, it's up to you if it's delicious or not :)), a game (if I can think one up) and door prizes (I use the plural with hesitation, but I'll do my best). The meeting/potluck will be held Thursday, June 7 at Gloria Dei Church in Northbrook. The doors open at 6:00 p.m. and we will eat promptly at 6:30 p.m., since we will all be starving.

This time around, food assignments are as follows:

A-H bring a main dish or a HEARTY SALAD

I-R bring a dessert

S-Z bring an appetizer

Board members will supply beverages (no, no martinis, unless we want to go out to the parking lot and hang around the trunk of my car and pretend we're back in high school) and ice and IQI will supply paper goods and utensils.

I would appreciate a few volunteers to arrive by 5:30 to help me with set up, including

- putting tablecloths and centerpieces on all the dining tables
- putting tablecloths and arranging all food service and beverage tables
- receiving food and setting it out
- getting flatware, napkins and plates and cups out and ready
- getting water in the urn and coffee/tea out and water heating for those who want it, along with sugar, etc.

AND

- and clean-up crew to remove the tablecloths, toss garbage, and put away supplies that can be used another time.

As usual, I'm sure a good time will be had by all.

Diane Capitani, Member-at-Large (in her last official duty)

Slate of officers proposed for 2012-13

This slate will be voted on at the June Meeting:

President	Esther Behnke
VP-Programs	Roberta Levin
VP-Contracts	Angel Sidor
Treasurer	Randy Menakes
Secretary	Donna Derstadt
Fine Art of Fiber	Tina Smith—Co-Chair Judy Curtis, Ardis Mistak
Membership	Katie Ordover Patti Carrington
Workshops	Georgia Cibul—registration Diana Burrows - workshop hosts
Oak Leaf Editor	Ellen Pomes
Member at Large / Historian	Jennie Gordon
Committee Chairs:	
Challenge Quilt	Linda Howard, Anne Hart (assistant Diane Capitani)
Library	Barbara Feinberg, Linda Feinberg, Judith Maffris
Publicity	Mary Meyers
Website	Ellen Pomes
Quilt-In	Chris Deering, Cynthia Churchwell
Raffle Quilt 2013	Donna Derstadt, Sue DeVarco, Linda Yatzor
Service/Friendship	Lynn Bradurn, Diana Burrows
Raffle Quilt 2014	OPEN

Fine Art of Fiber 2012

It is not too soon to start your planning for Fine Art of Fiber 2012. Show dates are November 1 – 4, with set up on the 1st. Updated entry forms should be on the FAOF website shortly and entries can be sent anytime after that until September 15. FAOF is an important event for IQI and your participation is vital to making it a success. Make and sell items in the Boutique or from the Quilt Turning Table. Make and donate pieces for the Silent Auction. Sell raffle tickets for our beautiful quilt. Volunteer to help.

Important news, though, regarding Boutique participation and selling quilts, is that all participants will be required to provide a social security number as FAOF has been told it must issue 1099s to everyone that sells something. We recognize that may be upsetting for many of you, but unfortunately, the state is cracking down on organizational sales such as this. It falls in the same category as the necessity to charge sales tax even though we are a non-profit making organization. We sincerely hope this will not turn you off and you will still be willing to be part of the Boutique. If you have questions regarding this issue, feel free to contact any one of us. We will try to answer your questions or get answers for you.

Meanwhile, get to work on making something to exhibit. You are key to having a beautiful and creative show.

Your Fine Art of Fiber Committee

Jan Sneesby Aaron, Judy Curtis, Roberta Levin, Ardis Mistak and Tina Smith

Financial Report

March 31, 2012

Checking Account:

Opening Balance, 3/01/12	\$ 8,833.68	
Income	1,103.50	
Cleared Expenses	<u>1,271.18</u>	
Closing Balance, 3/31/12		\$ 8,666.00
Uncleared checks	64.00	
Less Anticipated Expenses	<u>\$ 100.00</u>	
Available Cash	\$ 6,502.00	

Savings Account:

Cash on Hand, 3/31/12	<u>\$ 9,911.62</u>
	\$18,577.62

IQI Library

Try your hand at painting a quilt!

While you have your fabric paints out for the workshop by Maggie Weiss take a look at these books in our collection. They will be located in the Red – Embellishment / Design / Color (Theory/Dyeing) section of the Library.

Don't forget that May is the last open library before the summer. Members who renew their membership by May can take out books for the summer due at the September meeting.

Dye Painting! by Ann Johnston

Color by Design: Paint& Print with Dye by Ann Johnston

Six Color World by Yvonne Porcella

Complex Cloth by Jane Dunnewold

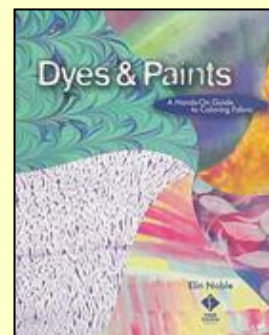
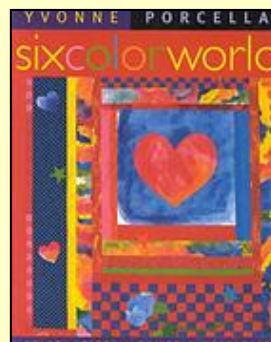
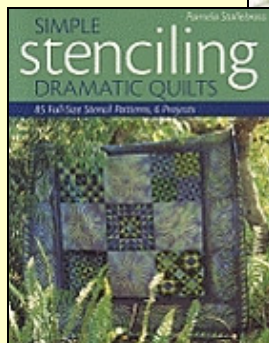
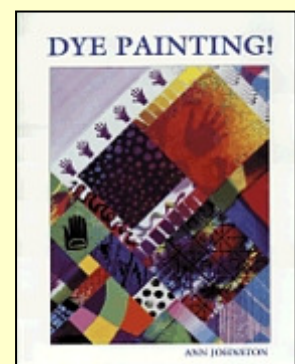
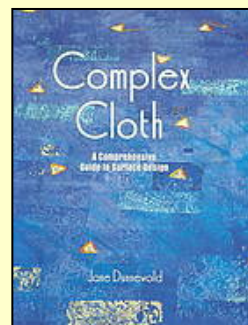
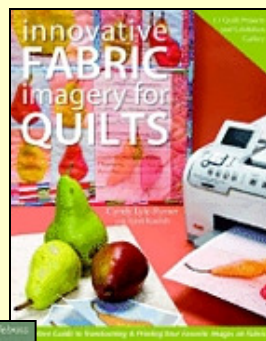
Dyes & Paints: A Hands on Guide to Coloring Fabric by Elin Noble

Innovative Fabric Imagery for Quilts: Must Have Guide to Transforming & Printing

your Favorite Images on Fabric by Cyndy Lyle Rymer and Lynn Koolish

Simple Stenciling: Dramatic Quilts by Pam Stallebrass

Your Librarians



Of Interest to quilters



More information
at: www.wisconsinquiltshophop.com
or call The Fabric Gallery at 262 554-6445

Upper Midwest Machine Quilting Today Show www.mqtoday.com

August 2nd - 4th, 2012

Oconomowoc, WI

the learning place for **ALL MACHINE QUILTERS** . . . domestic (home sewing machine), short-arm, mid-arm and longarmers.

16th Annual Quilt Show Spring Gathering - May 5 - 6

Kettle Moraine Lutheran High School

Jackson, Wisconsin 53037

Admission \$5.00

www.itsastitchquiltguild.com

Sun Prairie Quilt Show - May 6 - 8

St. Alberts Parish Center

2420 St. Albert's Drive

Sun Prairie, WI 53590

Admission \$6.00 www.sunprairiequiltshow.com

Threads from Past to Present—July 6-8

<http://www.bataviaquiltshow.com>

Batavia, IL



Color Our World—August 11 & 12, 2012

<http://sites.google.com/site/piecemakersquiltingguild/Home/quilt-show>

Carl Sandburg College

Galesburg, IL

May workshop—Maggie Weiss

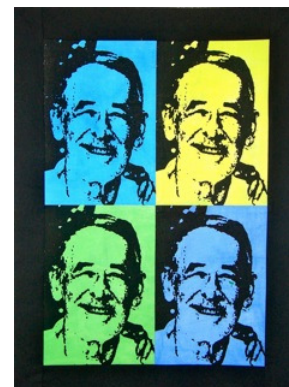
Registration form: http://illinoisquilters.com/events/workshops/2011_workshop_reg_form.pdf



Pop Art Block Quilts
Saturday, May 5, 2012
9AM – 4PM

One Day Workshop – work apron required
class fee \$58(member) / \$68 (non member)
\$25 supply fee

One image repeated to great effect and combined with vividly contrasting cloth (either 7 colors or b & w), and opaque paints makes for a stunning quilt top. Careful color combinations produce spectacular results! After assembling pre-made thermofax screens, students consider value and color combinations and proceed to adding sashings and borders and possible assembly of quilt tops in the after-



2011-12 IQI Board & Committee Roster

BOARD OF DIRECTORS

President	Jennie Gordon
VP-Programs	Diana Burrows
VP-Contracts	Roberta Levin
Treasurer	Esther Behnke
Secretary	Donna Derstadt
Fine Art of Fiber*	Ardis Mistak
	Judy Curtis
	Jan Aaron
Membership*	Cynthia Churchwell & Georgia Cibul
<i>Oak Leaf Editor</i>	Ellen Pomes
Workshops* - Hosts	Mary Meyers
- Registrations	Chris Deering
Member-at-Large	Diane Capitani

**shared office / shared vote*

COMMITTEE CHAIRS:

Challenge	Georgia Cibul
Library	Barbara Feinberg & Linda Feinberg & Judith Maffris
Publicity	Angel Sidor
Website	Ellen Pomes
Quilt-In	Deb Pine Fay Stickler Amy Spungen Laurie Golden
Raffle Quilt 2012	Georgia Cibul & Stephanie Strand
Raffle Quilt 2013	Sue Divarco Donna Dernstadt Linda Yatzor
Service / Friendship	Lynn Bradburn Diana Burrows
Historian	Diane Capitani

Did you know?

That each member is entitled to one free ad per year in the **Oak Leaf**? You can use it to advertise any goods or services for sale.

Please submit your ad (1/4 page or smaller) to info@illinoisquilters.com - just see all the contact information and submission deadlines below.

About the Oak Leaf: Advertising Rates & Contact Info

The Oak Leaf is published nine times yearly by Illinois Quilters Inc. Advertising from individuals, groups and businesses is welcome and subject to approval by the editor.

Please address any correspondence to Ellen Pomes, editor, by email to:

info@illinoisquilters.com

Size	Monthly	Yearly (9-10 issues)
Business Card	\$5	\$30
¼ Page	\$8	\$60
½ Page	\$15	\$120
Full Page	\$30	\$240