

IQI

PO BOX 39

WILMETTE, IL 60091

WEBSITES:

WWW.ILLINOISQUILTERS.ORG

WWW.ILLINOISQUILTERSINC.ORG

ILLINOISQUILTERS.COM



The Oak Leaf

VOLUME 31, ISSUE 10

JUNE, 2012

COMING UP!

- June 7, 2012—**Year End Potluck**—Gloria Dei, Northbrook, IL
- June 16, 2012—**Service**—Gloria Dei, Northbrook, IL
- June 23, 2012—Board Crossover Meeting
- July 21, 2012—**Service**—Gloria Dei, Northbrook, IL
- August 18, 2012—**Service**—Gloria Dei, Northbrook, IL
- September 6, 2012—**MEETING!** - Schoolhouse!

Inside this issue:

June Potluck Information	2
Proposed 2012-13	
Slate of Officers	3
Membership Offer	4
Fine Art of Fiber	4
April Treasurer's Report	5
Quilt In Information!	5
2013 Raffle Quilt	6
Of Interest to Quilters	6
NEW! 2013 Workshops	8-15

President's Message

This is my last letter for the newsletter. It's been an interesting two years. I want to thank all those who served with me on the boards for 2010-11 and 2011-12. These stalwarts are Jan Aaron, Esther Behnke, Debbie Bookman, Lynn Bradburn, Diana Burrows, Diane Capitani, Cynthia Churchwell, Georgia Cibul, Judy Curtis, Val Curtis, Chris Deering, Donna Derstadt, Sue DiVarco, Barbara Feinberg, Linda Feinberg, Laurie Golden, Anne Hart, Edrene Heiss, Linda Howard, Roberta Levin, Flo London, Judith Maffris, Mary Meyers, Ardis Mistak, Katie Ordovery, Jim Pilarski, Debbie Pine, Ellen Pomes, Ellie Rest, Angel Sidor, Amy Spungen, Fay Stickler, Stephanie Strand, and Nell Thorpe.

Thank you all for your help.

Happy Quilting,
Jennie Gordon

Bring to IQI Potluck [at Gloria Dei]

- Nametag
- Item for the Potluck
- Challenge Quilt
- Show & Tell
- Checkbook to sign up for the 2013 workshops!!!
- Personal datebook to schedule workshops, volunteer dates & events
- Yourself (and a friend-guest fee just \$5)

2013 Workshops Announced!!!

See pages 8-14 for detailed information about all our speakers and workshops

Please consider signing up for the October workshop now so we can get the minimum number of participants to keep the workshop on our schedule.

A Reminder!!!

IQI End of Year Potluck Information

Thursday, June 7 at Gloria Dei Church

Doors open 6:00 p.m., Dinner at 6:30.

FUN! GOOD FOOD and DOOR PRIZES!

This time around, food assignments are as follows:

A-H bring a main dish or a HEARTY SALAD

I-R bring a dessert

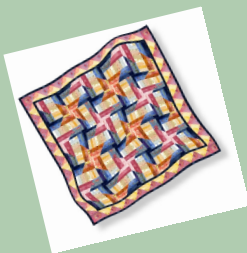
S-Z bring an appetizer



Board members will supply beverages (no, no martinis, unless we want to go out to the parking lot and hang around the trunk of my car and pretend we're back in high school) and ice and IQI will supply paper goods and utensils.

I would appreciate a few volunteers to arrive by 5:30 to help me with set up AND clean-up crew to remove the tablecloths, toss garbage, and put away supplies that can be used another time.

Diane Capitani, Member-at-Large (in her last official duty)



Of Interest to Quilters:

Tired of putting holes in your walls to hang your quilts?

Here's a clever idea using 3M Command Strips and a tension rod.

<http://amisimms.com/noseeumquhas.html>

Thanks to Kathy Jurevicius for this find!

Slate of officers proposed for 2012-13

This slate will be voted on at the June Meeting:

President	Esther Behnke
VP-Programs	Roberta Levin
VP-Contracts	Angel Sidor
Treasurer	Randy Menakes
Secretary	Donna Derstadt
Fine Art of Fiber	Tina Smith—Co-Chair Judy Curtis, Ardis Mistak
Membership	Katie Ordoover Patti Carrington
Workshops	Georgia Cibul—registration Diana Burrows - workshop hosts
Oak Leaf Editor	Ellen Pomes
Member at Large / Historian	Jennie Gordon
Committee Chairs:	
Challenge Quilt	Linda Howard, Anne Hart (assistant Diane Capitani)
Library	Barbara Feinberg, Linda Feinberg, Judith Maffris
Publicity	Mary Meyers
Website	Ellen Pomes
Quilt-In	Chris Deering, Cynthia Churchwell
Raffle Quilt 2013	Donna Derstadt, Sue DeVarco, Linda Yatzor
Service/Friendship	Lynn Bradurn, Diana Burrows
Raffle Quilt 2014	OPEN

Member dues Discounted Through June 30th!

Join IQI or renew by the end of June and save \$5 on your member dues. Bring your \$45 payment to the June 7 potluck & annual meeting or mail it by June 30. Forms will be available from the Illinois Quilters website shortly or at the membership table June 7 at Gloria Dei.

From July 1 the dues are \$50. Why not take advantage of the early response discount and reward yourself and your stash with a couple of new fat quarters? Other advantages: once we have your 2012-13 membership you can immediately begin reserving your spot (at the member rate) for any or all of next year's wonderful workshops and for the Quilt-In weekend retreat. Also, the guild library will be available to you first thing at the September guild meeting.

If you have questions please give a call. On June 7 we will have the names of all those who already paid for 2012-13

Cynthia Churchwell (847 899 7417) & Georgia Cibul



FINE ART OF FIBER

We encourage all members of IQI to consider participating in the boutique at the next Fine Art of Fiber show. The boutique continues to be a very popular draw to the show with repeat customers year after year. Many customers have told us that they plan and save for the show for their holiday shopping. It is a lot of fun to work and shop in the boutique! We are all talented and should share our work with others, and the boutique is a great opportunity to make a little money!

If you are interested, please fill download the form from www.fineartoffiber.org (or find a copy on pg 15 of this newsletter). There is a limited amount of space in the boutique and only 60 sellers will be able to participate, so please read through the boutique guidelines, fill out the form and mail it in to the address on the form as soon as it is available.

Scarves, wraps, hats, jewelry, purses, doll clothes, stuffed animals, puppets, holiday decorations, aprons, table runners, coasters and art objects are all very popular and sellable in the boutique. You are not limited to quilts – notecards, patterns, and clothing are all acceptable. It just has to be your handiwork!

You will take home 75% of all the goods that you sell at the boutique. IQI will get 15%, the Garden 10%. IQI's share helps to pay for our monthly speakers, workshops, etc.

You don't need to have a huge inventory of goods to participate – try your hand with just a few items or sell something you might have in your stash of projects. To encourage our guild members to participate, the work requirement is just one 3/12 hour shift during the show. You will come and set up your items before the show, and pick up whatever is not sold on Sunday after the show closes. The boutique is always busy and time flies!

Looking forward to working with you in the boutique this November!

Any questions? Please contact Roberta Levin at rlevin2000@aol.com or by phone at 847-924-7495. I will be happy to answer any questions or find out what the answer is!

Take a virtual break from the heat think about January's Quilt-In!

Your Quilt-In committee has been organizing class offerings for the next Quilt-In, January 25-27, 2013, at Techny Towers Conference Center, 1001 Waukegan Road, Techny, IL (just north of Willow Rd and Northfield). Class information and registrations will be available at the June 7 potluck and thereafter from the IQI website. Class samples will be available at the September meeting. Your \$130 deposit to IQI is due with the registration; the balance, which varies by room type, is due in January.

This casual retreat begins Friday evening and concludes Sunday afternoon. Your participation fee includes two nights' accommodation in hotel-like rooms, three meals Saturday plus Sunday brunch, class options, prize drawings and lots of camaraderie and sharing. Most rooms are for double occupancy but there are some triples for those pajama parties and a few singles for people who need them (any spares can then be assigned per registration request). You are equally welcome to participate in classes or work on your own projects. Each person has a 'home base' table for the weekend in either the large or smaller workroom (we'll try to accommodate your preference), although class work may call you temporarily to another room. Dress code is comfy clothes and a smile; bunny slippers are welcome.

If you have never attended, ask around for testimonials and give Quilt-In a good, long thought. We have a finite number of participant slots, so reservations will be accepted as long as there is room, up to the Towers' January 10 deadline. IQI members have first chance; non-members (including former members, members' friends & relatives) are charged an additional \$25 and may register after November 30 so long as space allows.

Financial Report

Checking Account:

Opening Balance, 4/01/12	\$	8,666.00	
Income		1,186.15	
Cleared Expenses		<u>324.28</u>	
Closing Balance, 4/30/12			\$ 9,527.87
Uncleared checks	\$	16.56	
Less Anticipated Expenses		<u>.00</u>	
Available Cash	\$	16.56	

Savings Account:

Cash on Hand, 4/30/12		\$ 9,912.04
		<u>\$19,439.91</u>

2013 Raffle Quilt

At this time, we wish to Thank the following members for
paper piecing the mountain & flying geese blocks.

Georgia Baker, Esther Behnke, Harriet Bertsche, Bev Bolsen, Debbie Bookman,
Georgia Cibul, Valerie Curtis, Chris Deering, Jennie Gordon, Edrene Heiss,
Lucy Hill, Edith Long, Mary Meyers, Debbie Pine, Ellen Pomes, Penny Randall,
Anita Ruesch, Amy Spungen, Ruth Stegmeyer, Fay Stickler, Mary Anne Wallace,
Barbara Wessel and Kristin Woods.

Thank You also to Jan Aaron, Patti Carrington, Jim Pilarski and Ellen Pomes
for paper piecing the Goose Blossom kits.

And lastly, Thank You to Jan Aaron, Georgia Baker, Esther Behnke,
Chris Deering, Mary Meyers, Angel Sidorand Pat Valerio
for doing the Applique Kits.

The Raffle Committee
Sue DiVarco, Donna Derstadt & Linda Yatzor

BUS SHOP-HOP

October 12th and 13th, 2012

Ride in luxury to 8 fabulous quilt shops.

See many wonderful displays and get lots of
new ideas as you ride a coach bus between three
states to shop and explore without the hassle of driving.
The trip includes meals, prizes and lots of fun for everyone!

Quilter's Garden, Princeton, IL,
Countryside Village, Braidwood, IL,
Bits N Pieces, Crown Point, IN,
Lolly's, Shipshewana, IN,
Erica's, South Bend, IN,
Quilter's Heaven, Northbrook, IL,
The Stitchery, Delavan, WI
Quilter's General Store, Rockford, IL.

Our overnight stay will be in Shipshewana, Indiana.
Call Quilter's Heaven for more information and to sign up! \$140/person

2011-12 IQI Board & Committee Roster

BOARD OF DIRECTORS

President	Jennie Gordon
VP-Programs	Diana Burrows
VP-Contracts	Roberta Levin
Treasurer	Esther Behnke
Secretary	Donna Derstadt
Fine Art of Fiber*	Ardis Mistak
	Judy Curtis
	Jan Aaron
Membership*	Cynthia Churchwell & Georgia Cibul
<i>Oak Leaf Editor</i>	Ellen Pomes
Workshops* - Hosts	Mary Meyers
- Registrations	Chris Deering
Member-at-Large	Diane Capitani

**shared office / shared vote*

COMMITTEE CHAIRS:

Challenge	Georgia Cibul
Library	Barbara Feinberg & Linda Feinberg & Judith Maffris
Publicity	Angel Sidor
Website	Ellen Pomes
Quilt-In	Deb Pine Fay Stickler Amy Spungen Laurie Golden
Raffle Quilt 2012	Georgia Cibul & Stephanie Strand
Raffle Quilt 2013	Sue Divarco Donna Dernstadt Linda Yatzer
Service / Friendship	Lynn Bradburn Diana Burrows
Historian	Diane Capitani

Did you know?

That each member is entitled to one free ad per year in the **Oak Leaf**? You can use it to advertise any goods or services for sale.

Please submit your ad (1/4 page or smaller) to info@illinoisquilters.com - just see all the contact information and submission deadlines below.

About the Oak Leaf: Advertising Rates & Contact Info

The Oak Leaf is published nine times yearly by Illinois Quilters Inc. Advertising from individuals, groups and businesses is welcome and subject to approval by the editor.

Please address any correspondence to Ellen Pomes, editor, by email to:

info@illinoisquilters.com

Size	Monthly	Yearly (9-10 issues)
Business Card	\$5	\$30
¼ Page	\$8	\$60
½ Page	\$15	\$120
Full Page	\$30	\$240

IQI Workshop Registration Form for 2012/2013

Name: _____

Phone: _____ E-mail address: _____

Non-members only: _____

Address	City	St.	Zip
---------	------	-----	-----

For each workshop, please circle the Member or Non-Member Price. Total amount remitted with each form should be the total of all circled amounts.

Date	Workshop Title	Member	Non-Member
10/05/12	Weaving on your Sewing Machine	\$45.00	\$55.00
10/06/12	Trapped Fiber TM Techniques	\$45.00	\$55.00
1/4/13	APPRAISALS-SEPARATE SIGN UP LIST		
01/04/13	Wool Applique-Fruitopia MORNING ONLY PLUS \$40 kit fee (very comprehensive!)	\$25.00	\$30.00
01/05/13	Quilts with Great Edges PLUS \$45 kit fee (very comprehensive!)	\$45.00	\$55.00
02/08/13	Embellishing Quilts Kit fee (if any) TBA	\$45.00	\$55.00
02/09/13	Easy Funky Piecing Kit fee (if any) TBA	\$45.00	\$55.00
03/08/13	How to Start with an Art Quilt	\$45.00	\$55.00
03/09/13	Surface Design for Art Quilts	\$45.00	\$55.00
4/5/13	McTavishing	\$45.00	\$55.00
4/6/13	Quilt as Desired	\$45.00	\$55.00
5/3/13	UFO Session 1 Friday 9-5	\$20.00	\$25.00
5/3/13	UFO Session 2 Friday 6-10	\$10.00	\$15.00
5/4/13	UFO Session 3 Saturday 9:30-5:30	\$20.00	\$25.00
5/3-5/4	UFO All 3 Sessions (\$5 Discount)	\$45.00	\$60.00
	TOTAL AMOUNT DUE:		

Supply lists available on the IQI website: www.illinoisquiltersinc.org

Bring a completed form with check or cash to a monthly meeting or send completed form with a check payable to IQI to:

Georgia Cibul
11 Winfield Drive
Northfield, IL 60093
847-441-5678



September 2012

Quilter's Schoolhouse!

September is back to school month and Illinois Quilters Guild members are joining in the fun. Like getting a new box of crayons, we'll replenish our quilter's toolboxes with something new.

Join us in September as we kick off our new program year with a fun and lively Schoolhouse!

This month, we'll gather for a lively evening of:

- Tips
- Techniques
- Tools
- Demonstrations
- Make it & take it
- Door prizes
- Show & Tell
- Workshop Signups
- Sew a Block for Service
- Library



Every 15 minutes the bell will ring and you'll get to learn something new!

We'll also highlight the 2012-2013 lectures and workshops.

Guests are welcome as usual for a \$5 fee. If they sign up for membership that evening, the \$5 will apply towards their membership!

Please email Roberta at rlevin2000@aol.com if you'd like to teach a technique or demonstrate a tool!



October 2012

Susan Italo

Wild Onion Studio



Susan Italo, Wild Onion Studio

Susan Conn Italo, once a member of IQI, now lives in California. She is an award winning pattern designer, wearable artist and fiber artist. Susan's fiber art combines her love of color and surface manipulation with embellishments and techniques reflecting her concern for the environment. She uses her own hand dyed fabric along with recycled and repurposed materials in her artwork. She will present us with a trunk show of her fabulous creations.



FRIDAY WORKSHOP:
WEAVING ON YOUR SEWING OR
QUILTING MACHINE



Weaving combines texture and color with fibers. Traditionally created on a loom, weaving with a sewing or quilting machine allows for endless possibility of creative play. Whether you want to create a background fabric for appliqué, some interesting alternate blocks for piecing, or an entire wearable art piece, weaving will add appeal and interest no matter what color or fabric you use. We will discuss many variations of weaving techniques and fabrics in this unique class.

SATURDAY WORKSHOP

TRAPPED FIBER™ TECHNIQUES

Create your own art fabric using fabric, fibers, and film. Borrowing supplies from other fiber media, we will experiment with new techniques and materials to discover exciting ways to personalize the very basis of our quilts – fabric! Luscious silks, shimmering chiffons, even ragtag strips and threads become one-of-a-kind fabrics under the sewing needle. Add pizzazz to your art quilts, wearables, postcards, and more.

Website: <http://www.wildonionstudio.com/>

Blog: <http://wildonionstudio.wordpress.com/>





January 2013

Kathy Kansler



Kathy Kansler is a quilt teacher, quilt show judge and an AQS certified quilt appraiser. In 2008, she received the prestigious Jewel Pearce Patterson Award for Quilt Teachers. Her quilts have been exhibited internationally and she has won both regional and national awards. She has appraised nearly 2,000 quilts and has judged over 8,000 quilts. Multi-talented Kathy will present her lecture "Tell Me About my Grandma's Quilt" on Thursday, January 3rd, 2013. She will discuss a selection of 20 quilts.

FRIDAY AM WORKSHOP:

WOOL APPLIQUE- Fruitopia

Kathy has designed a folk art applique pattern specifically for this class. It has a pedestal fruit plate, loaded with fruit. The students will learn to work with wool for applique. A variety of hand stitches will be taught for finishing the edges of the wool motifs. Some of the wool for this project is from Ireland and other wool pieces have been hand-dyed by Kathy. The supply fee will include everything you need except scissors and pins- see list for details.



FRIDAY AFTERNOON:

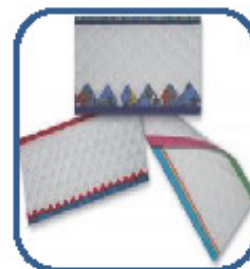
APPRAISAL FAIR-

Kathy will appraise quilts by appointment. If this time slot fills up, we will add Sunday, then Monday to the appraisal schedule. You will learn about your quilt, and receive a written appraisal including photographs of the quilt within 2 weeks of the appraisal.

SATURDAY WORKSHOP

QUILTS WITH GREAT EDGES

You will learn a variety of impressive techniques to complete the edges of your quilts. You will make and go home with samples including a double fold binding with mitered corners and connected tails, rickrack binding, reversible binding, fused binding, prairie points, scallops and two techniques for making piping. She will pepper the day with the history of binding, and you will go home with your samples and a 41 page instructional booklet. The supply fee will include prequilted base fabrics, cording, rick-rack and apre-cut fabrics for the edge treatments.



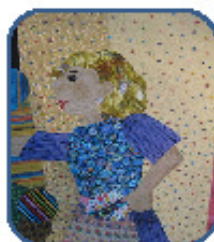


February 2013
Mary Lou Weidman
Mary Lou Quilts



Mary Lou Weidman has traveled the world teaching workshops that share her happy, whimsical quilting style. She has written four large books: *Whimsies and Whynots*, *Everyday Angels*, *Quilted Memories* and *Out of the Box*, and she also owns a pattern company. Her technique books *Hoochy Mama Quilts* and *Flower Power* are popular with her students when she travels and teaches workshops on her style.

Mary Lou will present her lecture and trunk show "Out of the Box". This lecture discusses how to get out, stretch, and stay out of the box. How to learn new things, go new directions and take the road less traveled.



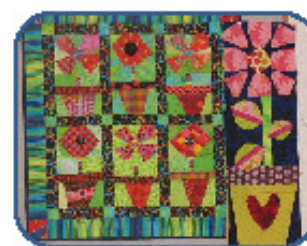
FRIDAY WORKSHOP:
EMBELLISHING QUILTS



Bring a favorite quilt that has been quilted, your favorite buttons, beads, rickrack, trim, flosses, and see what wonderful glorious things we can do to make a simple quilt a piece of art and excitement. Mary Lou's embellished quilts have won many awards. Once you start embellishing quilts, you won't be happy with keeping them plain. Come and learn the basics and some exciting new ideas that can make something that's ho hum into TERRIFIC art!



SATURDAY WORKSHOP
EASY FUNKY PIECING
(EASY PIECING THE FUN WAY)



Mary Lou has designed many "things" that are all pieced the "hoochy way" and they are fabulous and make terrific quilts with bright fabrics and a will to be creative and "out of the box." Let her teach you how while you make fish, flowers, faces, houses, toys, cats and loads of other fun things.

Website: www.marylouquilt designs.com/

Blog: marylouweidman.blogspot.com/



March 2013

Virginia Cruz Carlson



We are so fortunate to host IQI's own Virginia Carlson. An award-winning art quilter, Virginia will provide us with a lecture and slide show entitled "How I Got to Creativity and Didn't Know It". She will show the progression of her work and will share the comments that she received during this process. Also to be discussed is how joining an art gallery sped up that progression.



FRIDAY WORKSHOP:

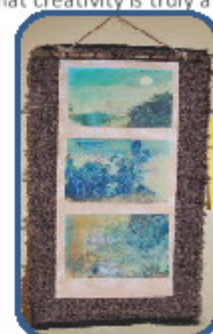
HOW TO START WITH AN ART QUILT

This class will take the fear out of starting an art quilt. Using your favorite fabrics, thread, beads, buttons and embellishments, (paintsticks and fabric markers are welcome too), you will go through some exercises that will develop confidence in your creativity. Some will be unusual, just to show you that creativity is truly a muscle that needs exercising.

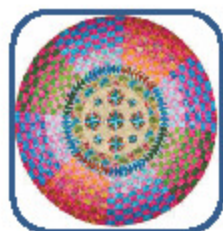


SATURDAY WORKSHOP

SURFACE DESIGN FOR ART QUILTS



This class will explore the various types of surface design. In this workshop, we'll be bringing fabrics we love AND fabrics we're not so in love with. Traditional and nontraditional fabrics and photos on fabrics will be used to show how surface design can change the entire look of the fabric and create a unique look for your art quilt. We'll be working with decorative and metallic threads and layering sheer fabrics to change the look of the fabric and create shadow illusions.



April 2013

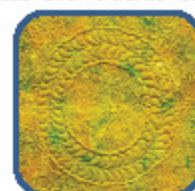
Ann Pigneri



Ann Pigneri is a quilt creator, designer and teacher living in Louisville, KY. She loves to design and create her own quilts and really enjoys color. She loves the interaction of color and design to create a visually stimulating and pleasing quilt. In April, she will present her lecture and trunk show, "How to Create Stunning Quilts", which is a fun and exciting lecture to aid you in creating stunning quilts! Why make a ho hum quilt when it takes just as much time to make an awww...how did you do that quilt? Learn some easy to understand and simple principals to aid you in future color selection to make your quilts have pizzazz. Even traditional quilts can be enhanced with fantastic color selection!

FRIDAY WORKSHOP:

McTAVISHING & BEYOND



Ann is certified to teach the McTavishing method of quilt fill created by long arm quilter Karen McTavish. You will learn the basic McTavishing method, mini-McTavishing and Cyclone McTavishing on a home sewing machine, plus flames, paisleys and curls and swirls with a McTavishing twist. Enhance your quilts with these wonderful machine quilting techniques! If you stitch on a midarm or long arm machine the techniques are the same, and your class knowledge will easily transfer to your machine. You will make the circle and a sampler in the class!



SATURDAY WORKSHOP

QUILT AS DESIRED???

WHAT ON EARTH DOES THAT MEAN???



Curves, straight lines, feather designs, cables, stencils, mark or no mark??? We will discuss in depth several drawing methods and thought processes to determine what would best enhance rather than hinder your beautiful quilt tops. This class will include an extensive trunk show, highlighting what to quilt in different situations. This class will apply any type of machine- home sewing or long arm. We will also have a demo and cover how to machine quilt a perfectly straight line with a home sewing machine without marking on your gorgeous quilt top. Please bring quilt tops if you are unsure what on earth to quilt on these. We will also discuss marking and the use of registration lines rather than marking the entire top, an in depth discussion of threads, and thread weights and how this affects the quilt appearance as well as thread tension as it relates to different thread weights.

Website: <http://www.annpigneri.com/>

Fine Art of Fiber 2012
Boutique, Art to Wear and Quilt Sales Application Form
Due Date: Wednesday, September 12th

Show Dates: November 1 – 4, 2012

Mail or give to: Carol Levenberg, 950 Augusta Way, Apt 302, Highland Park 60035

Artist's name and Business name (if applicable)

Address

City

State

Zip Code

Phone (day)

(evening)

(cell)

(e-mail)

This year, we are required to send any sales information to the IRS on a 1099. Because of this new requirement, you will be required to complete a W9 with your tax ID number. A W9 will be included with your acceptance letter and must be presented at check-in before you can set up.

Description and the approximate number of items that you will be selling (this information is very helpful for setup).

Description, including sizes, of display props (Please be specific. Items that are too large or visually distracting may have to be modified. If you have physical limitations, please describe any special requests that you might have.):

Volunteer times will be assigned. Please list the days, times that you are NOT available.

This application does not guarantee that you will be accepted into the Boutique. We have limited space and will be accepting applications on a first come/first served basis. We will let you know by the end of September if you have been accepted and what your boutique ID will be.

WAIVER: Every reasonable precaution will be taken to safeguard art works while at the Fine Art of Fiber. The Illinois Quilter's Guild, North Suburban NeedleArts Guild, and the Chicago Botanic Garden, its staff and volunteers are not responsible for accidental loss, damage of any kind, and/or theft. Payment will be from receipts only. I have read and understood the above rules.

Artist's Signature, Date

Member: IQI _____ NSNG _____ Both _____

Please remember that you may only use standardized FAOF price tags and IDs will be assigned.

I have worked as a cashier in the boutique in prior years _____ YES _____ NO